

По вопросам продаж и поддержки обращайтесь:			
Алматы (7273)495-231	Казань (843)206-01-48	Новокузнецк (3843)20-46-81	Смоленск (4812)29-41-54
Архангельск (8182)63-90-72	Калининград (4012)72-03-81	Новосибирск (383)227-86-73	Сочи (862)225-72-31
Астрахань (8512)99-46-04	Калуга (4842)92-23-67	Омск (3812)21-46-40	Ставрополь (8652)20-65-13
Барнаул (3852)73-04-60	Кемерово (3842)65-04-62	Орел (4862)44-53-42	Сургут (3462)77-98-35
Белгород (4722)40-23-64	Киров (8332)68-02-04	Оренбург (3532)37-68-04	Тверь (4822)63-31-35
Брянск (4832)59-03-52	Краснодар (861)203-40-90	Пенза (8412)22-31-16	Томск (3822)98-41-53
Владивосток (423)249-28-31	Красноярск (391)204-63-61	Пермь (342)205-81-47	Тула (4872)74-02-29
Волгоград (844)278-03-48	Курск (4712)77-13-04	Ростов-на-Дону (863)308-18-15	Тюмень (3452)66-21-18
Вологда (8172)26-41-59	Липецк (4742)52-20-81	Рязань (4912)46-61-64	Ульяновск (8422)24-23-59
Воронеж (473)204-51-73	Магнитогорск (3519)55-03-13	Самара (846)206-03-16	Уфа (347)229-48-12
Екатеринбург (343)384-55-89	Москва (495)268-04-70	Санкт-Петербург (812)309-46-40	Хабаровск (4212)92-98-04
Иваново (4932)77-34-06	Мурманск (8152)59-64-93	Саратов (845)249-38-78	Челябинск (351)202-03-61
Ижевск (3412)26-03-58	Набережные Челны (8552)20-53-41	Севастополь (8692)22-31-93	Череповец (8202)49-02-64
Иркутск (395)279-98-46	Нижний Новгород (831)429-08-12	Симферополь (3652)67-13-56	Ярославль (4852)69-52-93
Россия (495)268-04-70	Киргизия (996)312-96-26-47	Казахстан (7172)727-132	

Easy for you, engaging for them

If you're looking for a partner you can count on to care as much about your time, budget, and students as you do, look no further. Educators are at the center of everything we have to offer.

A curated selection of tools for ag educators

From essential supplies to all-in-one kits, we've got you covered.

A library of free lesson plans and resources

Save planning time with the fresh ideas, tips, and advice in our online Teacher Resource Center!



Prep students for careers in vertical farming

Indoor farming and vertical farming will play large roles in the future of global food production. Introduce your students to these methods now by having them grow vegetables and herbs inside the classroom using grow walls or all-in-one hydroponics or aquaponics growing systems (pp. 16–17).

To help get you and your students started, use the "How can vertical farming help feed the world?" lesson plan.



Prepare for animal care

The students in your classroom today could be the veterinarians and animal caregivers of tomorrow. They just need the right training tools.

Explore hands-on materials, lesson plans, kits, and more that enable your students to practice essential veterinary skills through scenario-based training.



What's inside:

Anatomy pp. 4-13



Nasco Fetal Pigs, p. 9

Plant Sciences pp. 14-28



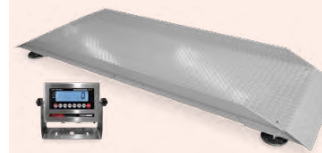
LaMotte Combination Soil Test Kit, p. 26

Species pp. 29-44



Nasco Classroom Incubator Kit, p. 31

Equipment pp. 45-53



Optima Livestock Alleyway Scale, p. 47

Showing & Grooming pp. 54-62



Lister Star Clipper, p. 60

Veterinary Supplies pp. 63-66



Vet Tech Surgical Instrument Kit with Identification Flash Cards, p. 64

BEST
SELLER**Life/form® Advanced Sanitary CPR Dog**

Provides each person with their own sanitary muzzle and nosepiece with a one-way valve. Muzzles may be disinfected and reused, while the nosepieces and lower airways are disposable. Minimizes the chances of cross-contamination and reduces cleanup. In addition to practice in assisted breathing, practice the appropriate rate, pressure, and position of cardiac massage, and coordinate the respiratory cardiovascular functions. For more advanced training, an IV can be established as well as placement of an endotracheal tube. The trainer is connected to a small box that shows a green light when the correct ventilation pressure is applied, a blue light indicates correct position for cardiac massage, a white light indicates correct pressures, and an audible beep with red light indicates excessive pressure. A visible chest rise appears when correct ventilations are applied. Includes 10 disposable nosepieces, 3 disposable lower airways, endotracheal tube, lubricant, 12 cc syringe, towels, butterfly set, artificial blood, 2 IV bags, control box with AC adapter, 9V battery, and soft carry case. 5-year warranty. Allow extra delivery time. 🐾

LF01155V121

Life/form® Basic Sanitary CPR Dog

Same as the Advanced Sanitary CPR Dog listed above, but without electronic monitoring or IV capabilities. Includes soft carrying case, 6 muzzles, 10 nosepieces, and 3 lower disposable airways. Allow extra delivery time. 🐾

LF01156V121

Disposable Nosepieces.

Pack of 10.

LF01164V121

Disposable Lower Airway.

Pack of 10.

LF01158V121

Replacement Muzzles.

Pack of 6.

LF01157V121

BEST
SELLER**CasPer the CPR Dog**

CasPer the CPR Dog provides training in mouth-to-snout resuscitation with individual use, disposable airway bags. These economical disposable shield/lung bags eliminate cross contamination between students and the need to disinfect the manikin after every use. This dog manikin can be used to teach proper hand placement for compressions, depth of compressions, airway maintenance, femoral pulse check, and adequate ventilation. Airways are changed quickly and without tools. 3-year warranty 100-5000V121

**Life/form® Canine IV Leg**

A fully functional canine IV leg trainer at an affordable price. Represents the left foreleg of a medium-sized dog in the sternal recumbent position with 2 interchangeable sleeves — normal fur for routine blood draws and a "shaved" area for IV catheter insertion. Replaceable vein system demonstrates actual blood flashback. Great for bandaging and restraint/assistance practice as well. Ideal for veterinary schools and vet tech programs. Portable storage box with built-in IV pole, blood powder, syringe, IV catheter, and 2 fluid supply bags.

LF01016V121

Replacement Sleeves. Includes 1 sleeve with normal fur and 1 "shaved" sleeve. Set of 2.

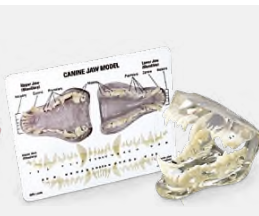
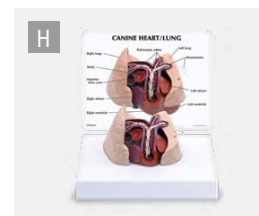
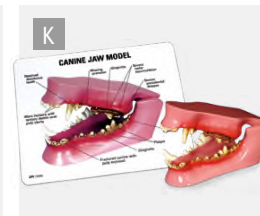
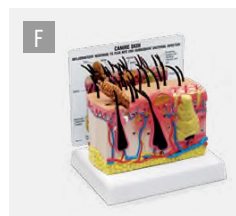
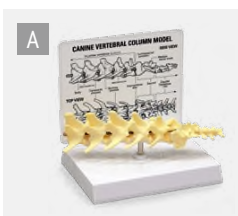
LF01016(A)V121

IV Catheters. Set of 3.

LF01016(B)V121

Replacement Vein Tubing. Set of 3.

LF01016(C)V121

**A. Canine 5-Piece Vertebrae Model**

Vertebral column of average-size dog features 5 lumbar vertebrae and disks, caudal (tail) vertebrae, and sacrum. Model: 8" x 2" x 2" on a 5" x 6" x 1" base. Card: 5 1/4" x 6 1/2".

C33925V121

B. Canine Shoulder Model

Average-size dog shoulder with scapula, humerus, biceps brachii tendon, coracobrachialis tendon, lateral glenohumeral ligament, medial glenohumeral ligament, and transverse humeral ligament. Model: 11 1/4" x 3" x 2" on a 5" x 6" x 1" base. Card: 8" x 5".

C33923V121

C. Canine Ear Model

Average-sized, two-sided anatomical model of a canine ear. Normal side depicts all parts of the ear so they can be identified; abnormal side demonstrates how those parts appear when something is wrong. Model: 4 3/4" x 2 3/4" x 2". Card: 6 1/2" x 5 1/4".

C33946V121

D. Canine Elbow Model

Healthy left elbow of average-size dog includes humerus, radius, ulna bones, and 6 ligaments. Model: 9 1/2" x 1 3/4" x 7 1/2" on a 5" x 6" x 1" base. Card: 8 1/4" x 6 1/4".

C33922V121

E. Canine 4-Stage Knee Model

Illustrate degenerative joint disease (osteoarthritis) with this set of 4 life-size models. The disease-free (normal) knee also includes additional important structures including ligaments, tendons, and patella. Progressive degeneration of the articular surfaces and development of osteophytes (bone spurs) is shown in the other 3 models. Model: 2" x 3 1/2" x 7". Card: 8 1/4" x 6 1/4".

C33929V121

F. Canine Skin Model

Enlarged cross-section of canine (dog) skin. One side has normal skin anatomy extending from the epidermis down to the layer of subcutaneous fat. The other side demonstrates progressing changes of a flea bite from wheal to infected pustule. Model: 5 3/4" x 4 1/2" x 3". Card: 6 1/2" x 5 1/4".

C33924V121

G. Canine Pelvis (Hip) Model

Average-size dog pelvis with both normal and osteoarthritic bone, body of ilium, greater trochanter, head in acetabulum, herniated disk, neck of femur, nerve, sacrum, and third trochanter. Model: 7" x 5 1/2" x 11" model on 5" x 6" x 1" base. Card: 6 1/4" x 8 1/4".

C33928V121

H. Canine Heart/Lung Model

Average canine heart and lungs infected with heartworms. Cut-away view demonstrates structures in the heart and lungs where adult-stage heartworms are normally found. Model: 3 3/4" x 2 3/4" x 2 1/2". Card: 6 1/2" x 5 1/4".

C33917V121

I. Canine Skin Parasites Model

Parasite effects range from irritation to life-threatening conditions if left untreated. Some can infect and transmit to humans. Shows the 3 most common external parasites: mite (4" x 2 1/4" x 2 1/2"), flea (4" x 1 1/2" x 3"), and tick (4" x 4" x 1 1/4"). Card: 8 1/4" x 6 1/4".

C33930V121

J. Dog Skeleton Model

Axial skeleton is made of trunk bones and skulls. Limb bones include forelimb and hind limb. PVC with black base. 23 3/8" x 7 7/8" x 11 3/16".

C3566V121

K. Canine Jaw Models

Models illustrate average-sized canine jaws. Hinged jaws open and close and separate for closer study. Each includes a 6 1/2" x 5 1/4" key card.

Canine Healthy/Diseased Jaw Model.

Healthy canine jaw on the right side and diseased/damaged teeth on the left. 4 3/4" x 2 3/4" x 2".

C33945V121

Canine Clear Jaw Model.

Healthy canine jaw showing the roots of all teeth (incisors, canine, premolars, molars).

4 1/4" x 3" x 2".

C33927V121



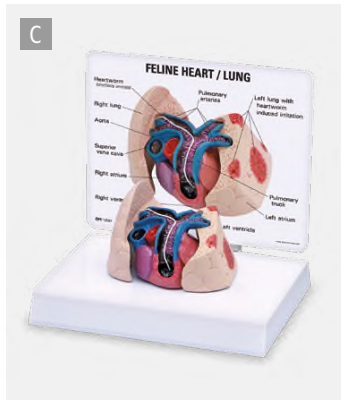
TUTOR MS – Data Selector (Sounds)
Reproduces actual canine heart and breath sounds with the advantage of instantly changing between sounds for comparisons. Stethoscopes are placed on the pliable pads of the Sounders for lifelike use hearing sounds. Up to 15 Sounders may be used together in chain-like fashion. LEDs on both sides of the volume control light only during systole to permit differentiation between systolic and diastolic events. Battery-operated for individual and classroom use. Comes with 2 Sounders. Sound modules sold separately below.
SB28954V121

Canine Heart & Breath Sounds Complete Set. Includes 1 of each sound module below. TUTOR MS Data Selector (SB28954V121, above) needed to use these sound modules.
SB48099V121

Canine Heart Sounds Module
1) Atrial Fib 6) Pulmonic Stenosis
2) Mitral Regurgitation 7) Respiratory Crackle
3) Mitral Valve Click 8) SAS
4) Normal 9) Mitral Regurgitation VPC
5) PDA 10) VSD

Canine Breath Sounds Module
1) Tracheal 8) Stridor
2) Vesicular 9) Cavernous
3) Broncho-Vesicular 10) Crackles, Med. to Fine
4) Bronchial 11) Crackles, Rhonchi
5) Wheezes 12) Crackles, Coarse
6) Monophonic Wheeze 13) Pulmonary Edema
7) Pleural Friction Rub 14) Puppy

SB48101V121

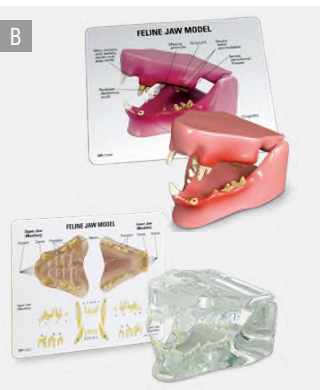


A. Acupuncture Models
The left side of the body shows acupuncture points, each numbered for easy reference. The right side of the body shows internal anatomical structures, muscles, and organs.
C35660V121 Dog (12" x 3 3/16" x 11 15/16")
C35659V121 Cat (11" x 2 3/4" x 7 1/2")
Each

B. Feline Jaw Models
Average-sized feline jaws. Hinged jaws open, close, and separate for closer study. Model: 2 3/4" x 2" x 1 1/8". Card: 6 1/2" x 5 1/4".

Feline Healthy/Diseased Jaw Model. Healthy teeth on the right side and diseased/damaged teeth on the left. Eight pathologies: fractured canine, periodontal disease, tartar accumulation, plaque, gingivitis, worn incisors, retained deciduous tooth, and missing premolar.
C33921V121

Clear Feline Jaw Model. Healthy feline jaw showing the roots of all teeth (incisors, canine, premolars, and molars).
C33926V121

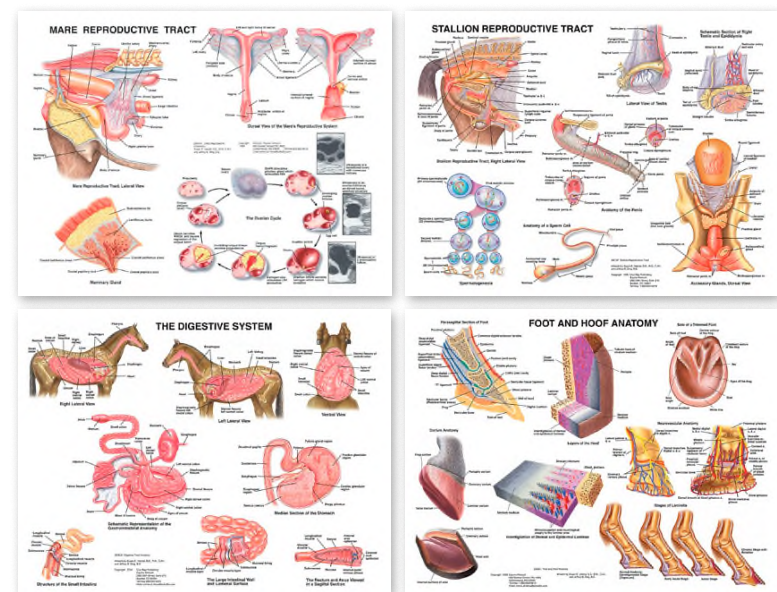


C. Feline Heart/Lung Model
Average feline heart and lungs infested with a single heartworm. Cut-away view demonstrates structures in the heart and lungs where adult-stage heartworms are normally found. Cut section of lung indicates patches of heartworm-induced irritation. Model: 3 3/4" x 2 3/4" x 2 1/2" on a 6 1/2" x 5" base. Card: 6 1/2" x 5 1/4".
C33918V121

D. Feline Elbow/Shoulder Model
Life-size model of an elbow and shoulder of a cat. Features normal bone and osteoarthritic changes to joints. Model includes: scapula, humerus, radius, ulna, and 9 important ligaments and tendons. Model: 7 3/4" x 4" x 3/8" on a 6 1/2" x 5" x 1" base. Card: 6 1/2" x 5 1/4".
C33916V121

E. Feline Pelvis Model
Average cat pelvis model features femur, vertebrae L6 and L7, caudal (tail), and spinal cord. Osteophytes (bone spurs) indicate degenerative osteoarthritis of the hip joint. Model: 7" x 4 1/4" x 2 1/4" on a 6 1/2" x 5" x 1" base. Card: 6 1/2" x 5 1/4".
C33919V121

Equine Anatomical Wall Charts
Vividly detailed wall charts illustrate important aspects of horse anatomy. Each full-color, laminated chart is 26" x 20".
C23724V121 Mare Reproductive Tract
C23725V121 Stallion Reproductive Tract
C23726V121 Digestive System
C23727V121 Foot and Hoof Anatomy
Each
Equine Anatomical Wall Chart Set.
Includes 1 of each above.
C23728V121



Conformation Anatomy
Detailed chart illustrates the parts of a horse's front and back legs and hooves. 26" x 20".
C25863V121

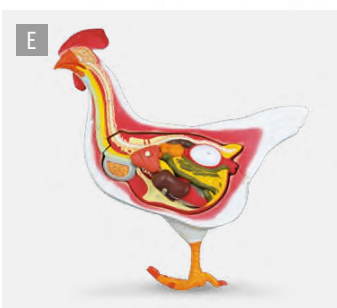
Equine Skull & Teeth Model
Life-size model based on a 15-year-old Quarter Horse that reflects the horse's original teeth. Demonstrates a number of dental malocclusions and other abnormalities. Allow extra delivery time.
Z45658V121
Replacement Teeth. Allow extra delivery time.
Z45659V121



Equine Dental Anatomy and Aging
Presents an extensive look at horse teeth and jaw structure. Provides a complete picture analysis to determine a horse's age. 26" x 20".
C25864V121

Horse Acupuncture Model
Teaching aid is ideal for showing commonly used acupuncture points on a horse. 9 1/16" x 2 3/4" x 9 1/4".
C35657V121





A. Cow Digestive System Model
Shows the entire alimentary canal, enlarged view of stomach projecting omasum, abomasums, rumen, reticulum, and the diagrammatic digestion process with cellulose breakdown. Numbered key card included. 16½" x 11¼" x 2¼".
C33289V121

B. Comparative Heart/Brain Displays
Clear displays feature carp, frog, snake, pigeon, and rabbit hearts or brains for comparison. 3" x 6¼" x 1".
SB47290V121 Hearts **SB47291V121** Brains

C. 4-D Vision™ Cow Model
Learn the makeup and structure of the cow by assembling and examining this model. Detailed parts and a transparent outside for viewing internal structures. Includes 28 detachable parts, display stand, and instruction guide. 6½". **CHOKING HAZ-ARD (I).** Not for under 3 yrs.
SB49146V121

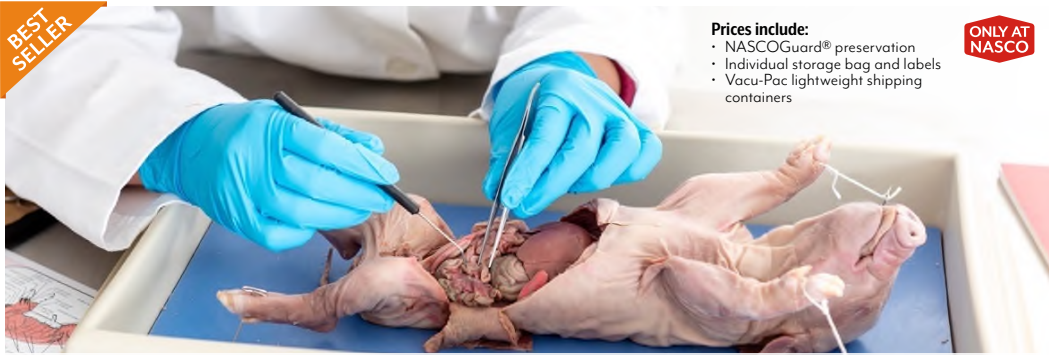
D. Cattle Acupuncture Model
Left side of the body shows acupuncture points, each numbered for easy reference. Right side of the body shows internal anatomical structures, muscles, and organs. PVC plastic. 9½" x 3" x 6".
C35656V121

E. 3-Part Hen Model
Life-size domestic hen model made from a natural skeleton. Right side shows feathers and left shows organs. Muscular system can be removed from the feathers. Internal organs are removable in 3 parts. Includes numbered key. 16½" x 7" x 17¼".
C33288V121

F. Domestic Hen Model
Life-size model with right side showing feathers and the other showing internal organs. Includes key card. 11½" x 7" x 13¼".
C33286V121

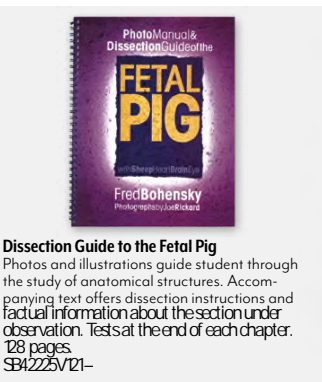
G. Rumen Model
Mini model is an ideal teaching aid for classroom or field use. Exact detail properly displays internal and external differences between the 4 compartments of the bovine rumen. Durable, easy cleaning plastic. 7½" x 6" x 3".
C26380V121

H. Tag Placement Cow Ear Model
Learn proper placement of ear tags using this realistic model molded from an actual cow's ear. Cartilage and other anatomical landmarks are readily visible. Use permanent green marker to show proper application areas and red permanent marker to designate improper locations. You can even apply actual ear tags to the ear. 7½" x 4¼".
C26251V121



Fetal Pigs
All fetal pigs are embalmed prior to color injection. Double-injected pigs have red latex injected into the arterial system and blue latex injected into the venous system (via the external jugular vein in the neck). 10"-13".
LS03787V121 Plain Embalmed **LS03789V121** Double Injected

Standard Polyethylene Pan with Dissecto Flex-Pad
Make it easy to perform routine dissections by keeping specimens in place. The pan is made of tough polyethylene. It won't rust, crack, or leak. The nonskid pads prevent movement on table. Designed to be used with Dissecto Flex-Pads only. Cover not included.
SB6233V121



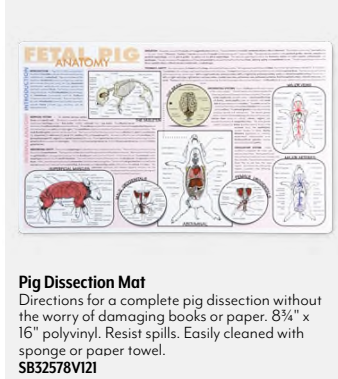
Dissection Guide to the Fetal Pig
Photos and illustrations guide student through the study of anatomical structures. Accompanying text offers dissection instructions and factual information about the section under observation. Tests at the end of each chapter. 128 pages.
SB42225V121



Fetal Pig Sagittal Section
Sagittal section of an 11"-12" artery-injected fetal pig for observing internal organs and vessels before starting dissection. Great demonstration tool in clear plastic bag to use as a demonstration model. Can be removed for dissection. Teacher's guide included.
LS03565V121



Nitrile Gloves
Ultra soft and super stretchy. Reduces hand fatigue. Textured surface. Thinner for maximum dexterity. Superior barrier protection. 100% synthetic. Box of 100 for sizes X-small, small, medium, and large; box of 90 for size X-large. 4 mil.
SB48872V121 Small **SB48874V121** Large
SB48873V121 Medium **SB48875V121** X-Large



Pig Dissection Mat
Directions for a complete pig dissection without the worry of damaging books or paper. 8¾" x 16" polyvinyl. Resist spills. Easily cleaned with sponge or paper towel.
SB32578V121



Pig Acupuncture Model
Model is of a Shanghai white boar shows 55 acupuncture points often used on head, neck, buttock, tail, and limbs. (9½" x 3½" x 5½")
C35658V121



Cause of Death Autopsy Kit
Students will follow the steps a medical examiner would take as they conduct an authentic forensic autopsy. A complete activity guide will take students through step-by-step instructions of the medical examiner process. The 3 fetal pigs represent victims with stab wounds, gunshot wounds, or a broken back. Use the scientific method in real-life applications as your students investigate the demise of the pigs. Kit includes three 10" to 13" pigs, suture needle, nylon thread, data cards, bags, and a complete activity guide.
LS03825V121
Refill Kit. Three pigs and data cards.
LS03825(CB)V121



Nasco Dissection Tray and Accessories
For large pigs. Includes dissection tray, pad, and cover that are just the right size. Includes 18" x 11" dissection tray, 18" x 11" pad and cover.
SB46037V121



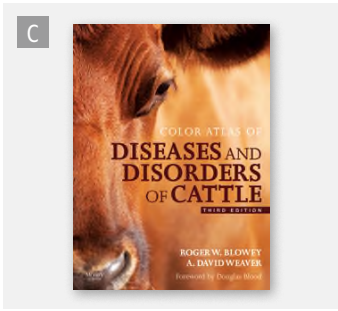
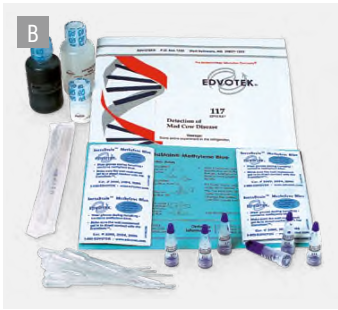
Youth Lab Apron
80% cotton/20% polyester. Machine wash/tumble dry. 24" x 30". Fabric imported.
SB48483V121



Rubberized Cloth Aprons
Protects from everything from natural materials to chemicals. Impermeable. Flexible. Acid resistant.
C33044V121 36" x 27"
C33045V121 42" x 27"
C33046V121 42" x 36"
C33047V121 46" x 36"



Fetal Pig Anatomy Aprons
Lightweight and disposable. Made of 3 mil polyethylene. Aprons do not protect from harsh chemicals. Box of 100.
SB35157V121



A. Veterinary Urinalysis Simulation
Analyzes simulated dog urine for pH, density, glucose, phosphates, and chlorides. Use the results to help diagnose the health of several dogs. NOTE: A hot plate, Bunsen burner, and test tubes are necessary, but are not included. Enough supplies for 30 students. **CHOKING HAZARD (I).** Not for under 3 yrs.
C34432V121

B. Ready-to-Load™ DNA: Detection of Mad Cow Disease
Examine simulated PCR products from several feed mills to ensure no animal parts are being used in cattle feed. DNA samples are stable at room temperature. For 8 gels (2-3 students each); 16-24 students total.
C26406V121



Animal Health and Food Safety: Chicken Little, Chicken Big Kit (Developed by SEPUP)
Participants analyze data from a fictitious 8-week study on the effects of a chicken growth supplement. Activities introduce thresholds and toxicology, the design of clinical trials, and how to determine threshold and lethal doses. For 32 people or 8 groups of 4. **CHOKING HAZARD (I).** Not for under 3 yrs.
C33792V121



C. Color Atlas of Diseases and Disorders of Cattle
Presents over 840 color illustrations and clear coverage of conditions, including burns, bleeding calf syndrome, rib fracture, jejunal hemorrhagic syndrome, and more. Covers the visible signs of diseases and disorders in the live animal, improvements in animal welfare, locomotor disorders, lay terms, acronyms, and more. Illustrated. 272 pages.
C26415V121



E. Natural Selection and Antibiotic-Resistant Bacteria Kit
Models the effects of antibiotics on disease-causing bacteria. See how more-resistant bacteria are selected if antibiotics are not taken properly. **CHOKING HAZARD (I).** Not for under 3 yrs.
SB42898V121

BEST
SELLER**Nasco Owl Pellet Classroom Kit**

Gr. 4-8 Everything you need to begin owl pellet dissection. Teaches predator-prey relationships, energy transfer through food chains, and more. Includes a bucket with 100 owl pellets, 15 learning guides for students working in pairs, and a 40-page resource guide with lessons, vocabulary, and assessments. Aligned to NGSS. **SB53337V121**

Nasco Bucket O' Pellets. 100 large pellets in plastic bucket with lid. **SB42866V121**

ONLY AT
NASCO**Owl Pellet Kit**

Dissect regurgitated owl pellets containing indigestible pieces of prey and identify contents using illustrated worksheets. 15 owl pellets, 15 teasing needles, 30 worksheets, and guide. For 30 students. **⚠ CHOKING HAZARD (1).** Not for under 3 yrs. **SB33780V121**

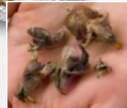
**NewPath Learning®
Owls and Owl Pellets Flip Chart**

Gr. 5-12 Introduce and review standards-based science concepts on owls and their prey. Features 10 double-sided, laminated charts, each 12" x 18" and spiral-bound on a durable, free-standing easel. The front of each chart features a graphic overview, while the back serves as a write-on/wipe-off activity chart. Activity guide with copy masters and exercises also included. **SB47625V121**

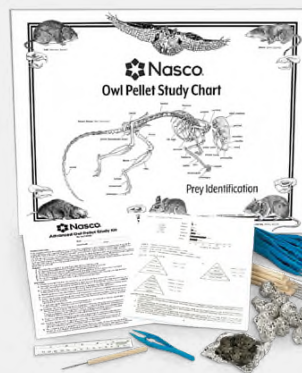
ONLY AT
NASCO**Nasco Owl Pellets**

Compact balls of fur, feathers, and bone that have been regurgitated by an owl after feeding. Dissection of these pellets helps students gain insight to predator-prey relationships. **SB09759V121**

SB09759(SM)V121 Small pellets

**Nasco Basic Owl Pellet Kit**

Gr. 3-7 Study food chains from regurgitated owl pellets easily dissected to expose skulls and other skeletal parts. Undigested remains provide bones, teeth, hair, or feathers of prey animals. Charts of skulls and skeletons help identify prey animals. Includes 15 dried and fumigated owl pellets wrapped in aluminum, 15 student worksheets, and teacher's guide. **SB20193V121**

ONLY AT
NASCO**Nasco Advanced Owl Pellet Kit**

Gr. 7+ Learn about predator-prey relationships through analysis of owl pellets. Observe skeletal features to identify prey animals consumed and learn about energy transfer through food chains. Includes 15 dried and fumigated owl pellets wrapped in aluminum, probes, owl pellet study chart, 15 student worksheets, and teacher's guide. **SB20192V121**

ONLY AT
NASCO**Nasco High School Microscope, Monocular/0.65 NA Condenser**

Even though this microscope was designed with economy in mind, it has all of the quality features found only on microscopes costing considerably more. Model is durable, student proof, and requires limited maintenance. All optics are top quality, and microscope comes with a limited lifetime warranty.

Specifications:

- LED corded illumination
- All-metal body and mechanism
- Student proof construction
- Separate coarse and fine adjustment
- Viewing head inclined
- Locked on 10X wide-field eyepiece with calibrated pointer
- Stage drilled and tapped for add-on mechanical stage
- Monocular head rotates 360°
- DIN Objective lenses are achromatic, parfocal, color-coded with 40XR lens (retractable)
- Stage stop to prevent slide damage
- Slip clutch to prevent mechanism damage
- Convenient drift adjustment
- Stage clips are spring-loaded to eliminate bending
- Built-in 0.65 NA stage condenser, 5-aperture disc diaphragm for 3 objective models
- Substage illuminator with on/off switch
- Vinyl dust cover

SB25253V121**Intermediate Student Microscope with LED Light**

- Metal construction
- Rotatable head
- Fine focus control
- Objective lenses 4X, 10X, and 40X
- 100,000-hour, 4.5V LED cool illumination light
- Built-in 15-hour rechargeable battery
- Detachable AC power cord
- 110V

SB45405V121BEST
SELLER**Celestron® LCD Digital Microscope II**

Change powers from 40X to 100X to 400X (up to 1600 with 4X digital zoom) with a turn of the three-position rotating lens turret. TV output allows television or projector displaying.

Specifications:

- Full-color 3½" TFT LCD screen with onboard software rotates 180°
- Fully adjustable mechanical stage
- Three fully achromatic objective lenses (4X, 10X, and 40X lenses on rotating turret)
- Three-position nosepiece with click stop
- Upper and lower, built-in adjustable LED illuminators
- NA 0.65 condenser
- Capture and save still images and video (built-in 5 MP camera sensor and included 1 GB SD card)
- Use AV cable with external monitor, projector, or TV screen
- Included accessories: dustcover, canvas carry case with shoulder strap, 5 prepared slides, and four-plug multi-country AC adapter
- Includes Exploring Cell Curriculum; Grades 6-8: Life Science, Technology, and Mathematics
- Complies with NGSS MS-LS1-1 and MS-LS1-2
- 6½" x 5½" x 13"
- Stage dimensions: 3½" x 3½"

SB49573V121**Premiere® Cordless High School Standard Microscope**

An upgraded cordless student microscope with a mechanical stage and powerful magnification of up to 1,000X.

Specifications:

- 10X eyepiece with pointer
- 4X, 10X, 40X, and 100X oil-immersion objectives
- Magnification power of 40X to 1,000X
- Rotatable head
- Coarse and fine focusing controls
- Mechanical stage with clips
- Coaxial diaphragm

SB52648V121

- Built-in rechargeable battery with 15-hours of life and detachable AC power cord
- LED lighting system
- Long LED bulb life of 100,000 hours
- Dust cover and immersion oil included
- Metal construction

**Nasco High School Binocular Microscope**

- Dual LED illumination (both incident and sub-stage illumination)
- 4X, 10X, and 40X DIN objectives
- 10X WF eyepiece
- Separate coarse and fine illumination
- Mechanical stage
- 1.25 NA iris diaphragm

SB46630V121



AquaPonics Grow Rack with Fish Barrels
Complete system with 4 plant trays and 2 fish filter barrels. The 4 trays can support 24 plants. Adjustable water depths — higher water levels for starting new sprouts, lower water levels for use of NFT for established plants. Includes snap-together rack; trays; net pots; rockwool cubes; water pump; supply input; and 2 recycled food-grade, fish filter barrels (each 55 gallons). Use indoors or out. Allow extra delivery time. 🐟
Z51488V121
AquaPonics Grow Rack Only. Use with an existing tank or aquarium (not included) or place on top of 55-gallon fish filter barrels (Z51470V121, sold separately below). Can also be used next to a pond outdoors. 18"L x 48"W x 25"D. Includes grow rack assembly, water trays with covers, net pot, rockwool cubes, plumbing, and water pump (with 5'L supply and drain hoses). Pump is capable of pumping to a height of 6'. Allow extra delivery time. 🐟
Z51469V121



Mini Fish Farm™
Entire system contains 400 gallons of water, making heating, water changes, and overall size and weight minimal. Maintenance takes less than 10 minutes per day. Only two 5-gallon pails of water need to be emptied and replaced. Entire system fits in a 6' x 8' area and can fit through a 36" door. 24" x 24" window. Polyethylene tank is 64" dia. x 35"H. System includes an air pump, clarifier, biological filter, and an operation manual. All electrical components are UL approved. 1-year warranty. Allow extra delivery time. 🐟
Z29920V121



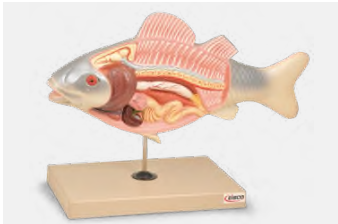
A. 2 1/2-Barrel Aquaponics System
Teach the fundamentals of a fast-growing agriculture opportunity with this simple, compact, efficient design. Complete system fits in about 6 sq. ft. of floor space. Top half-barrel is used both as a filtration system and a plant grow bed. With almost 5 sq. ft. of growing space, you can plant and test a number of crops. The 2 connected barrels hold almost 100 gallons of water. Both barrels can hold fish, giving you the flexibility to separate sizes or species. System will support 25 or more full-size tilapia. Self-contained system needs no direct plumbing connections. Only electrical need is for a small water pump used to recirculate the water and also an air pump. A heater (Z40531V121 sold separately, below) can also be used for warm-water fish. System runs from a standard 120V outlet. Includes recycled food-grade barrels, pump, plumbing, and growing media for the grow bed. Allow extra delivery time. 🐟
Z47127V121

B. Complete Aquaculture System with 55-Gallon Barrels
This 3-barrel system fits in a 5 sq. ft. area. Configured as an ecosystem featuring biological filtration and an area for plant growth. Supports up to 15 full-size tilapia to a harvest size of 1 1/4 lbs. Self-contained system needs no direct plumbing connections. Only electrical need is for a small air pump used to aerate and recirculate the water. A heater (Z40531V121 sold separately, below) can also be used for warm-water fish. Both run from a standard 120V outlet. Includes 3 recycled food-grade barrels, plumbing, airlift column assembly, air pump with air diffusers, filter material, grow raft, net pots, and rockwool. Allow extra delivery time. 🐟
Z41888V121
300-Watt Heater. Submersible heater will help keep water temperatures at the proper levels for warm-water fish. Allow extra delivery time. 🐟
Z40531V121

C. Countertop Aquaculture System
These 3 containers are configured as an ecosystem featuring biological filtration and an area for plant growth. System is self contained and needs no direct plumbing. Fits in an area of just 2 sq. ft. Requires only a few connectors screwed together by hand, making it easy to clean or move in minutes. 14"H containers are recycled water carboys. Totally self-contained system requires only one 120V outlet for operation. Includes all containers, pipe, connectors, filter material, air pump, and air stone. Also includes a one-plant hydroponic raft. Allow extra delivery time. 🐟
Z40649V121



Counter AquaPonics with Grow Light
Add water along with your choice of fish and seed, then watch the ecosystem grow. System uses a space-saving 5-gallon aquarium (included) utilizing a simple airlift pump. Water flows through the filter media along to the plants and filtered water then returns to the fish. Can be used to grow a variety of herbs and lettuces. LED grow light is positioned directly over the grow raft. Height can be easily adjusted as plants grow. Top can be removed for easy cleaning. 16"L x 8"W x 21 1/2"H. Allow extra delivery time. 🐟
Z51477V121



Economy Fish Model
Shows all the general anatomy after dissection. Key card included. Mounted on stand. 15 1/2" x 7" x 10 1/2".
C33287V121



Fish (Carp) Model
Average-size carp model separates into 4 parts. One side shows the form and coloring, the other side shows the skeleton and topography of the intestines and gills. Intestines, air bladder, and testicles are removable. Mounted on base with key card. 17 3/4" x 7 7/8" x 11".
C33285V121



Countertop AquaPonics System
This 5-gallon aquarium utilizes a simple airlift pump. Water flows through the filter media, along to the plants. Filtered water then returns to the fish. Add water along with your choice of fish and seeds, then watch the ecosystem grow. Removable top for easy cleaning. Allow extra delivery time. 🐟
Z48490V121



Classroom Aquaponics
Engage students in ecology, biology, earth systems, math, history, and literature while pairing fish and plants in one integrated system. In addition to growing vegetables in a sustainable process, learn about germination rates, fish anatomy, and the nitrogen cycle. Disassembly for cleaning and harvesting is simple. Includes 10-gallon aquarium with open top for feeding and sampling, 60" of nutrient film technology growth channel, pump/powerhead with 160-gph flow, filter, tubes and fittings, manual, lesson plans, and manual. Allow extra delivery time. 🐟
Z49074V121



Submersible water pump
Locking cabinet for air pump

Hydroponics Growing Center
Self-contained ebb and flow system features two adjustable timers for water and sunlight, 150-watt grow light, water pump, containment plant tray (27 1/2" x 42" x 8"), 25-gallon nutrient reservoir with lid, submersible pump, air pump, locking cabinet for timers and air pump, air stone, hoses, and 8" net pots. Unit moves on 4" locking, leveling casters. 28" x 52" x 78". Allow extra delivery time. 🐟
Z49096V121





AquaSprouts® Complete Garden Kit
Contains everything you need to turn any standard 10-gallon aquarium (not included) into a self-sustaining ecosystem using aquaponics. Includes AquaSprouts® Garden, submersible pump, mechanical timer, expandable bar light, LED grow light, and grow media.
SB52714V121

AquaSprouts® Garden Kit
Contains everything listed above, except 10-gallon aquarium and LED grow light.
SB51992V121



GrowBox2
59 holes for 2½" plants, sponges, or any 2½" standard flower pot with particle filter net. Multiple tanks can be linked together and synchronized with included Smart Box. Water capacity: 8 gallons. 29½" x 23" x 15½". Allow extra delivery time. 🚚
Z50808V121



O2 Light
Doubles as a tabletop LED reading light with an air refresher fan. Adjustable dual-line water tank accommodates any standard 1", 2½", 3", or 4" flower pot. Fits up to sixteen 2½" pots or sponges. Adjustable position. Water capacity: 0.7 gallons. 22" x 5½" x 21½". Allow extra delivery time. 🚚
Z50814V121



GrowTank
For growing giant climbing plants and fruit. Eight large 2½" holes are over 1' deep. Four climbing tubes (5' each) for vining plants. Multiple tanks can be linked together and synchronized with included Smart Box. Water capacity: 21 gallons. 25½" x 17½" x 64¼" (with climbing tubes). Allow extra delivery time. 🚚
Z50813V121



OPCOM® Grow Kit for OPCOM® Farm GrowWall Hydroponics System
Includes 2 seedling trays; 120 grow sponges each for green lettuce, red leaf lettuce, and basil; 3 nutrient starters; 15 nutrient adjusters; and 30 pH adjusters (15 each of positive and negative).
SB53018V121

OPCOM® Farm GrowFrame Hydroponics System
All-in-one hydroponic growing systems for growing vegetables or flowering plants indoors year-round. Uses 90% less water than conventional outdoor gardening. Automated control system manages light and water circulation with one touch. High-intensity LED lighting simulates sunlight across full color spectrum. Open frame for easy access. Each system includes starter kit with seeds, pH and EC meters, and nutrients. Power: 100V-240V (±10%). Allow extra delivery time. 🚚





GrowBox
Tabletop unit has 4 adjustable LED lights and 50 sponge planting sites. Accommodates plants over 3' tall or vining plants. Water capacity: 3.9 gallons. 41" x 28" x 23" to 42". Allow extra delivery time. 🚚
Z50809V121



GrowFrame
Place on tabletop or hang on wall. Built-in fan helps to purify the air. Adjustable lighting. 22 planting sites fit any 2½" flower pot. Water capacity: 0.7 gallons. 25½" L x 19½" W x 4½" H.
Z50810V121

GrowWall 3
This all-in-one hydroponics growing system grows food year-round and uses 90% less water than outdoor gardening. Grow up to 180 plants at a time with the space-saving vertical design. The automated system adjusts LED light and water circulation efficiently, only using 1.15 kWh daily. Includes a starter kit with seeds, grow sponges, pH adjusters, and nutrients. Power: AC 100-240V. Allow extra delivery time. 🚚
NE30122V121



Aquaaponics Education Kit
Six lesson plans (50 minutes each) cover ecosystems, water cycle, fish basics, and more. Includes printed and electronic education booklets, seed packets, 20 g of natural fish food, and 4-oz. bottles of natural water dechlorinator and beneficial bacteria.
SB52672V121



Z46514V121



Raised Garden Box
UV-resistant white vinyl material will not rust, rot, or mold. Simply add soil. 48" x 48" x 15". Allow extra delivery time. 🚚
SN36313V121



Z46649V121



Z46651V121

Gronomics® — Taking Gardening to New Heights
100% Western red cedar. Finished version is coated with a food-contact-safe oil finish; rustic versions are unfinished. Dovetail design slides together in minutes without tools. Assemble, place fabric in elevated bed bottom (not used in raised bed), add soil of your choice, and plant. Allow extra delivery time. 🚚

Elevated Garden Beds
Z46514V121 Finished. 48"L x 34"W x 32"H.
Z46649V121 Rustic. 48"L x 24"W x 30"H.
Rustic Modular Raised Garden Bed. 48"L x 48"W x 13"H.
Z46651V121



Gro-Mats
Electric seed-propagation mat starts the gardening season early. Heated rubber mat provides gentle heat for starting seeds. Wire-cage design for the best combination of rising heat and air circulation. Mat is durable, water-proof, and thermostatically controlled.
C26695V121 21" x 15¼"
C26696V121 38" x 17"



Perma-Nest Plant Trays
Seeds, bulbs, and plants grow faster. Never harbors bacteria or harmful molds. Can be cold sterilized. Leakproof; will not rot or rust. Plastic.
SB15173V121 22" x 11" x 2½"
SB15174V121 8" x 12" x 2½"
SB15175V121 8" x 8" x 2½"



Soil Analysis Kit
Determines texture, composition, particle size range, density, permeability, porosity, and pH. Kit comes with loam, silt, clay, sandy soil, topsoil, fine sand, coarse sand, and gravel. Includes sieve sets and all required supplies for testing, complete instructor's manual with worksheets, assessment materials, answer keys, and a reusable plastic tote. Allow extra delivery time. 🚚

Z51293V121
Refill for Soil Analysis Kit. Allow extra delivery time. 🚚
Z51294V121



Plant Cell Study Kit
Prepare slides using the precut monocot and dicot plant cross sections and macerated stem tissue. After staining and mounting the samples, users then view their slides through a microscope (not included). Clearly diagrammed cell guides and individualized worksheets are provided. In addition to observing and studying stem cells, they develop an understanding of the art of slide preparation, a skill necessary in future life science and biology classes. There are enough slide preparation materials for 30 users. Contents: 90 microscope slides, 90 cover slips, 30 tissue transfer brushes, 1 drop-controlled bottle of glycerine, 4 drop-controlled bottles of differential stain, 1 vial of dicot cross sections, 1 vial of macerated stem tissues, 1 vial of monocot cross sections, instructor's guide with SDS, 30 worksheets, and 30 user's guides. ⚠️ CHOKING HAZARD (I). Not for under 3 yrs.
C33080V121



Do Onions, Strawberries, and Bananas Have DNA? Kit
Construct DNA models and then extract DNA from onions, strawberries, or bananas. You provide the fruits or vegetables and 95-100% isopropyl alcohol. Time required: 30 minutes. Enough materials for 10 lab groups of 2-3 students each (20-30 students).
SB25276V121



Nasco Bingo Games
Includes 30 bingo cards (5" x 6"), 50 question cards, master answer list, and plastic markers.

Animal Science. Companion Animals, Animal Health, Livestock, Poultry, and Animal Products.
C23063V121

Food Technology. Meats, Processing & Marketing, Safety, Science, and Dairy Products.
C23065V121

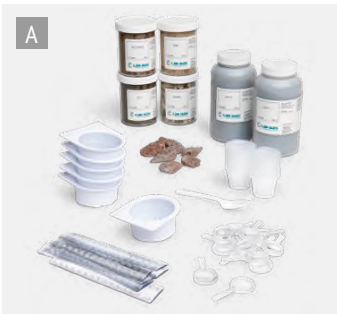
Taking Care of Animals. Companion Animals, Animal Health, Livestock, Poultry, and Animal Products.
C23066V121

Fish & Wildlife Management. Wildlife & Agriculture, Mammals, Birds, Fish & Reptiles, and Conservation & Management of Fish & Wildlife.
C24030V121

Environmental. Pollution, Landfills, Recycling, Resources, Global Warming, Ozone Depletion, and Conservation.
SB23663V121



Analysis of Minerals and Soils
Gr. 9-12 Kemtec's Analysis of Minerals and Soils Kit extends the student's experience to not only investigate the physical and chemical properties of trace evidence from a crime scene, but to learn to characterize soil texture. Ideal for Forensic Science, Agriculture, and Environmental Science Courses. Experiments include: Characterizing Soil Appearance, Acidity of Soil, Soil Comparison by Particle Size Analysis, Forensic Density Distribution of Soil Particles, Chemical Reactions of Substances in Soil, and Analysis of Glass Samples. Now with hands-on soil classification activities for determining soil texture by sedimentation and by using the feel method presented at differentiated learning levels. Required not included: fume hood, UV light, balance, microscope, oven, lamp, or hot plate, glassware, and general lab supplies. Contains lead nitrate. Meets national standards for grades 9-12. Note: Soil sample A contains lead nitrate, avoid direct contact with this soil and wash hands after handling. **CHOKING HAZARD (I).** Not for under 3 yrs.
SB425189V121



A. Introduction to Soil Kit
Observe different earth materials with a magnifying lens. Apply the skills and understanding developed in the first activity to observe and describe soil samples. Materials to accommodate 28 people, plus a guide.
CHOKING HAZARD (I). Not for under 3 yrs.
C29425V121



B. Soil Horizons
From the organic layer of humus that creates fertile topsoil, all the way down to the bedrock, each layer of soil is clearly presented and defined. 16" x 12" display.
C34457V121



C. Soil Nutrients and Fertilizers Kit
Includes vial of potting soil; vial of nitrate testing powder; 2 bottles of fertilizer solution; 3 bottles of nitrate extraction solution; 8 each of vials labeled "A," vials labeled "B," stir sticks, white scoops, SEPUP filter funnels, fine filter-paper circles, 3 ml pipettes, nitrogen color charts, and 30 ml graduated cups; 16 AB trays; 32 worksheets and guides; and an instructor's guide. **CHOKING HAZARD (I).** Not for under 3 yrs.
C29170V121



D. Nasco Soil Classroom Kit
Gr. 5-9 Gain an understanding of soil formation, soil composition, and soil chemistry, plus how soil factors into plant growth and ecosystems. Test the pH and NPK levels of soil samples, differentiate soil samples, and grow plants in various soils. **CHOKING HAZARD (I).** Not for under 3 yrs.
SB48134V121

E. Stream Table Kit
Sturdy plastic tray is large enough for group study or individual investigations. A special trough can be used for relating the rate of erosion to slope and stream volume.
SB01704V121 —
SB16231V121 Set of 4 kits

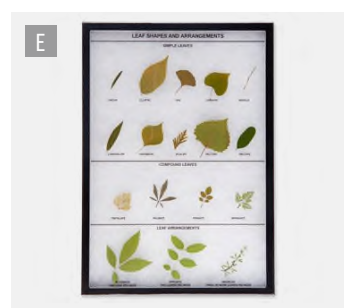
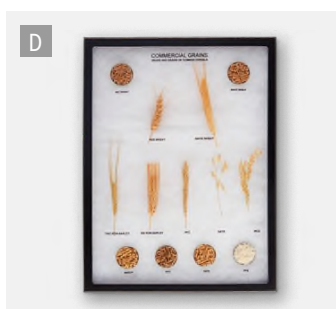
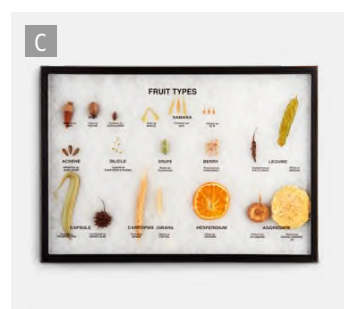
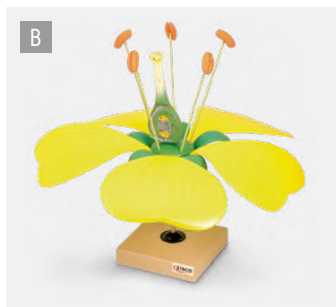
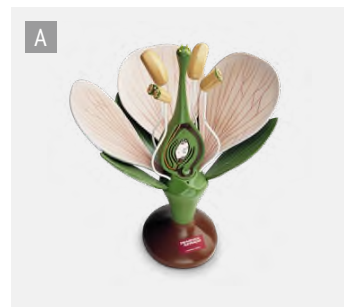


F. Nasco Soil Classes Kit
Eight glass jars in thermo-formed plastic tray — one each of sand, sandy loam, clay loam, peat loam, silt loam, loam, clay, and muck.
LS00519V121

G. Soil Test Kit
Give soil a checkup with simple, three-step tests that detect levels of common chemicals. Kit includes comparator box and 10 capsules for each of the following tests: pH, nitrogen, phosphorus, and potassium.
C14572V121



H. Nasco Soil Erosion Simulator Kit
Introduce students to the science behind soil erosion through simulation. This kit uses hands-on scientific procedures to study soil erosion, how it occurs, and how to prevent it. Teach conservation methods that can be used, natural vs. unnatural erosion, and how soil erosion affects our lives. Includes two soil erosion simulator trays, water catch basin, oat seeds, watering cart, two angle ladders, assessment questions, follow-up activities, and instructions.
SB45434V121



A. Giant Dicot Flower Model

Fully dissectible into 12 parts. Ovary wall is open for examination of the developing embryo and endosperm. 28 coded structures in vivid colors. 17" x 14" x 10".
SB16058V121

B. Typical Flower Model

Features an ovary with a single ovule inside. Detachable parts. Comes on a base with numbered key card. 16½" x 8½" x 13".
C33284V121

C. Fruit Types Display

Explore the diversity and structure of fruiting bodies. 19 fully labeled specimens represent 11 fruit types. 21" x 14".
SB31336V121

D. Commercial Grains

12" x 16" Riker display showing the heads and grains of common cereals.
C19940V121

E. Leaf Shapes and Arrangements Display

Mount illustrates the most common forms for botanists. Simple and compound leaves. 14" x 21".
SB31331V121

F. Commercial Crops Identification Mounts Series

Each 5" x 8" mount has a descriptive backing that gives the average and annual U.S. statistics for total acres harvested, yield per acre, total production, and commercial value. 16 specimens usually include oats, rice, wheat, rye, barley, millet, sorghum, buckwheat, tobacco, corn, peanuts, cotton, soybeans, sunflower, alfalfa, and hops. Specimens may vary due to availability. 6" x 18" flip bin for easy filling and storage.
C25046V121

G. Plant Mounting Sheets

11½" x 16½" cardboard herbarium sheets. Printed legend in lower right-hand corner for recording. No rag content. 140-lb. weight paper. Pack of 25.
C09647V121

H. Crop Identification Kit

10 real, individually bagged and labeled crops; 10 crop byproducts; and a guide with hands-on activities.
C24345V121



TickleMe Plant™

Gr. K+ When touched, the TickleMe Plant™ (Mimosa pudica) quickly closes its leaves and even its branches move down when tickled. These plants also appear to sleep at night by closing up their leaves. Seeds can sprout in a matter of days and within a month the plant will move when tickled. Adult plants can produce pink flowers.

Group Kit. Everything you need for your group (up to 30) to grow these plants from seeds to flowers and back to seeds. Includes 30 seed packets, 30 flower pots (4"), and 30 expanding Wonder Soil® waters. The 38-page TickleMe Plant™ book features over 60 color photos, information about how to care for your plant, over 20 teacher-created science projects, and experiments.
EL10351V121

Greenhouse Kit. Includes 2 plant seed packets (each with 10-20 seeds), reusable greenhouse made of recycled plastic, 6 flower pots, 6 coco-peat soil pellets, 10 fun science experiment ideas, and instructions. ⚠ CHOKING HAZARD (1). Not for under 3 yrs.
C29749V121

Student Growing Kit. Includes mini greenhouse, 6 peat pellets, 1 plant seed packet with 10-20 seeds, 10 fun science experiment ideas, and instructions. ⚠ CHOKING HAZARD (1). Not for under 3 yrs.
C29747V121

Plant Seed Packet. Includes 10-20 seeds and instructions.
SB43354V121



Seed Starting Kit

Includes seed assortment, pack of 50 Jiffy® peat pots, 50 plant tags, 16 quarts of Jiffy-Mix® seed starting soil, and osmocote plant food.
SB42710V121



Nasco Floral Design Basics Materials Kit

Gr. 7-12 Everything you need to complete the Floral Design Basics Lesson Plan – except the flowers. Kit includes: 12 elastic wrist corsage wristlets, a roll of floral tape, floral wire, 12 white plastic bowls for centerpiece arrangement, 6 blocks of floral foam, assorted ribbons, 12 corsage pins, and lesson plan.
NE40097V121

Floral Arrangement & Corsage Making

Bring a little sunshine and color into your next horticulture class when students make their own floral arrangements or corsages.

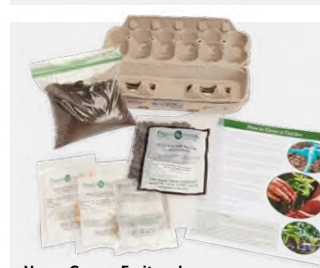
Silver Elastic Corsage Wristlet. The building block of your wrist corsage. Uniquely woven with mounting plate to fit softly but firmly on the wrist. Pkg. of 20.
NE40084V121

Stem-Wrap Floral Tape. For bouquets, arrangements, flower crowns, flower pens, gift wrapping, scrapbooking, and more. ½"W x 30 yds. L. Green.
NE40085V121

Floral Wire. Use for making boutonnieres, centerpieces, wrist corsages, and more to hold flowers in place. Green. ½-lb. pkg.
NE40086V121

Arrangement Container. Create fantastic centerpieces or floral arrangements with this white, plastic bowl. 6" dia. x 2"H. Single-design use. Pkg. of 12.
NE40087V121

Floral Foam Blocks. Use wet or dry. Cut to fit any container. Green. Each block is 9"L x 3"W x 4¼"H. Pkg. of 6.
NE40088V121



Nasco Grow a Fruit and Vegetable Garden Student Kit

Get your students started on their very own garden. This handy, economical take-home kit includes: 1 pack each of pumpkin, green beans, lettuce and corn seeds; seed starting cartons, soil, planting directions, and activity guide.
SB53412V121

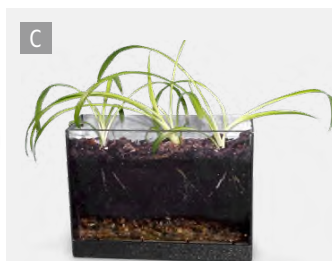


Nasco Grow a Decorative Garden Student Kit

Budget friendly take-home or in-class student kit shows students the beauty and the magic of blossoms. Kit includes: a 4-pack of annual flowers and grasses; seed-starting cartons and soil; planting directions and activity guide.
SB53411V121

LOOK BELOW THE SURFACE

Grow interest in the growing fields of plant and soil science



A. Now You See It, Now You Don't™ See-Through Compost Container

Learn about decomposition, composting, life cycles, and environmental education. Three aerated compartments let students view the decomposition process and make side-by-side comparisons. 5¼"D x 13"W x 8"H clear plastic box with faux grass top, thermometers, and guide.

SB47477V121 -

B. Root-Vue Farm™

Self-watering grow unit with angled acrylic viewing window for easy viewing of carrot, radish, and onion roots. Unit also has built-in water basin and drainage reservoir, light shield that keeps plants growing but can be removed for viewing roots, 8 super-expanding grow mix wafers, 3 packets of seeds, identification labels, and 16-page booklet with instructions and experiments. **⚠ CHOKING HAZARD (1).**

SB22804V121

C. Root Tank

Study a root without uprooting the plant. Sloped walls allow roots to spread along them, providing a clear view of the intricate root systems. Durable welded acrylic. Sides slope at a 20° angle. Integrated tray catches runoff from watering. Holes in the bottom provide easy draining. 10" x 4½" x 8".

C34714V121

D. Rootview

Study root development. Inward sloped walls made of clear, break-resistant acrylic. Both sides of the chamber provide a clear view. 19½" x 11" x 16¾".
C09679V121

E. Root Systems Display

Teach the different root systems: tap root, adventitious, nodulated, and fibrous. Four root types are clearly labeled and suspended in a 3½"W x 2¼"H block of clear resin.

SB47292V121

F. Decomposition Kit

Gr. 5+ Explores two very important concepts in studying life cycles: biodegradability and decomposition. Participants investigate the effect of various factors on decomposition and biodegradability. For 50 students or 24 groups. **Δ CHOKING HAZARD (I).** Not for under 3 yrs.

SB28793V121



C32988V12



Model DB Kit

High-grade, triple-plated, chrome-finished steel. Has 3 replaceable threaded tips: S-1, S-2, and S-3. Tube has nonclogging design. Includes handle, 2 extension rods, 15" tube, #10 tip wrench, and 17" heavy fiberboard case.

C08683V121



Soil Probe with Handle

Window slot for easy sample recovery. Sturdy design prevents probe from bending or twisting out of shape. Use without a liner. Includes a removable, corrosion-resistant, 10" cross handle with grips.

21" x 7/8"

C35620V121 Nickel plated

C3562IV12I Stainless steel

33" x 7/8"

C35619V121 Nickel plated

C35622V121 Stainless steel



WHIRL-PAK® Sample Bags
Collect samples of milk, feed, soil, and more. Strong, sterile, and leakproof. Polyethylene bags carry solids or liquids to a lab for testing. PUNCTURE PROOF TABS, which means the tape on the tab extends past the ends of the wire, covering the sharp points. Sterilized with ethylene oxide gas, which makes the inside completely bacteria-free. Use once and dispose. Unlike glass bottles, they are unbreakable, which means easier handling for milk haulers and lab techs. To close, simply whirl the bag 3 or more times and bend the tabs onto the bag.

NOTE: Call, email, write, or fax for quantity prices on WHIRL-PAK® bags.

Product No.	Capacity	Dimensions	Style	Bags/Box
B01064V121	2 oz.	5"L x 3"W	Write-On	500
B00679V121	4 oz.	7 1/4"L x 3"W	Plain	500
B01062V121	4 oz.	7 1/4"L x 3"W	Write-On	500
B00736V121*	18 oz.	9"L x 4 1/2"W	Plain	500
B01297V121	24 oz.	9"L x 6"W	Write-On	500

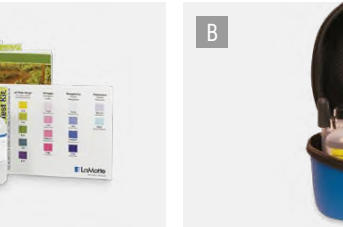
*Bags should not be used at temperatures above 180° F (82° C). Bags can be frozen to any temperature, including liquid nitrogen temperatures down to -346° F (-210° C). Careful handling required after freezing.



A. LaMotte Combination Soil Test Model EL
Inexpensive kit with simplified techniques. Includes 30 pH tests, 15 nitrogen tests, 20 phosphorus tests, 15 potassium tests, *Study of Soil Science* book, *LaMotte Soil Handbook*, 6 test tubes, and test tube stand in a hard case.

C08704V121

Refills for LaMotte Test Kit Model EL
C09206(A)V121 Nitrogen extract, 500 ml
C09207V121 Nitrogen indicator, 30 g
C09208V121 Phosphorus extract, 250 ml
C09209(A)V121 Phosphorus indicator, 15 ml
C09211V121 Potassium extract, 250 ml
C32581V121 Potassium test reagent solution, 15 ml
C27289V121 pH indicator solution, 120 ml



B. LaMotte Plant Tissue Test Kit Model PT-3R
Provides instructions and test materials for determining the presence of nitrogen, phosphorus, and potassium in plant tissue. Chemical reagents for making approximately 50 determinations are included, and replacement solutions are available.

C08709V121

C. Soil Sieve Sets
Stainless steel mesh in 6 sizes. Economical and ideal for separating soil and sediment particles. Set includes lid, catch pan, and 6 sieves.

6" (175 mm) Dia. (#5/4,000 micron, #10/2,000 micron, #35/500 micron, #60/250 micron, #120/125 micron, #230/63 micron).

C28083V121

8" (203 mm) Dia. (#5/4,000 micron, #10/2,000 micron, #35/500 micron, #60/250 micron, #120/125 micron, #230/63 micron).

C34715V121




D. Soil Sample Bag
Square bottom is heat sealed, making it sift-proof. Volume of approximately 28 oz. (828 ml). Comes with tin tie (attached). Bag measures 3 3/4"W x 2 1/2" gusset x 7 3/4"H. Box of 100.

C31882V121

E. Soil Test Kit
Contain liquid reagents and equipment for the given number of tests. Include tests for soil pH, nitrogen, phosphorous, and potash. 80 tests. Includes 20 tests each for soil pH, nitrogen, phosphorous, and potash.

C25446V121



COM-100: Waterproof Professional Series EC/TDS Meter
For use in water quality testing, hydroponics, water purification applications, wastewater regulation, aquaculture, labs and scientific testing, ecology testing, water treatment and more. Measures electrical conductivity (EC), total dissolved solids (TDS), salinity, and temperature. 4 scales: EC Range 0-9990 µS; EC Range 0-9.99 mS; TDS Range 0-5000 ppm (0.5 Scale), 0-5.00 ppt (0.5 Scale); TDS Range 0-8560 ppm (0.7 Scale), TDS Range 0-8.56 ppt (0.7 Scale). Temperature range: 32-130°F (0-55 °C). Automatic temperature compensation (ATC) using 3 temperature coefficients. Features waterproof housing (IP-67 rating), push-button digital calibration, auto-off function, data-hold function, and low-battery indicator. Large, easy-to-read LCD screen includes simultaneous temperature reading. Factory calibrated with a 1413 µS solution. Temperature range: 32-130°F (0-55 °C). Resolution: 0-99: 0.1 µS/ppm/ 0.01mS/ppt; 100-999: 1 µS/ppm; 1000-9990: 10 µS/ppm. Temperature resolution: 0.1° F/C. Accuracy: ±2% EC to TDS conversion factor: Non-linear conversions for KCl, 442TM or NaCl solutions, selected by the user. Probe has detachable platinum electrodes. Waterproof housing is submersible and floats. Includes batteries, translucent cap and lanyard.

C35309V121




PH-200: Waterproof Professional Series pH/Temp Meter
Ideal for pH testing water. Advanced micro-processor provides accurate readings in applications like hydroponics, purification applications, wastewater regulation, aquaculture, ecology testing, water treatment, agriculture, and more. Waterproof housing is submersible and floats. Digital automatic calibration (1 point) with digital fine tuning. Features automatic temperature compensation (ATC), auto-off function, data-hold function, and low-battery indicator. Easy-to-read LCD screen with simultaneous temperature display. Factory calibrated to pH 7.0 and 3-point checked. pH range: 0-14. Temperature range: 32°-130° F (0°-55° C). Resolution: 0.01 pH. Temperature resolution: 0.1° F/C. Accuracy: ±0.1 pH. Temperature accuracy: ±1%. Minimum EC/TDS: 5 µS/10 ppm. Electrode (replaceable glass sensor and reference tube electrodes). 7 1/16" x 1 1/16" x 1 1/16". Includes batteries, translucent cap, lanyard, and pH 7.0 buffer (sachet).

C35311V121



Rapitest® Digital Soil Test Kit
Measures levels of pH, nitrogen, phosphorus, and potash. Advanced LED digital technology and optical calibration systems. Kit reads soil solution color and displays results. Ready to use and includes all components and instructions needed to test all 4 variables.

C33018V121



Kelway Soil Acidity and Moisture Meter
Test soil in 3 minutes. Designed so that by the action of the electricity it generates, it will give an accurate pH reading of the soil on the outside scale of the dial and show moisture content of the soil on the inner scale. The electrical energy to move the indicator is due to a potential difference between 2 electrodes that act to show pH value. No batteries to run down or replace. Easy to use, just push tester vertically into soil to a depth covering the metal plates. Read the pH on the upper scale (3.5, 4, 5, 6, 7, and 8 pH values). Once pH reading is taken, push moisture button on side to obtain the moisture reading (0, 50, 70, 100% moisture). 6 1/2" L. Includes carrying case with belt loop and instructions. 6-month guarantee, fully serviceable.

C09002V121



Digital Soil pH Meter
The slender style provides an easy-to-read, instant digital read-out. Measures and displays the acidity/alkalinity of garden and container soil. Requires 3 GPA76 batteries (included).

C29626V121



My Weight Digital Scale
Backlit display has a 500 g capacity, is accurate to 0.1 g, and reads weight in grams, ounces, pennyweight, and carats. Large easy-to-read LED display, auto-off, and stay-on feature. Platform size: 5 3/4" x 5 3/4". Comes with AC power adapter. Requires 6 "AA" batteries (not included). 1-year warranty.

C32890V121



Deluxe Digital Electronic Scale
8" x 5" stainless steel platform. Moisture-resistant sealed components. Functions: ounce/gram, auto tare, extended tare range, auto hold, low-battery indicator, and auto shut-off. Capacity: 10 lbs./5 kg. Measures in 1/16-oz. increments for 0-2 lbs. Measures in 1/4-oz. increments for 2-10 lbs. (5 g increments for 1-5 kg). Dual powered: AC adapter for 120V outlet (included); or 9V battery that recharges when plugged in. 1-year warranty.

C33058V121



agraTronix™ MT-16 Portable Grain Tester
Direct readout for 16 grain scales. Each scale can be adjusted to match local elevator. Automatically averages up to 99 test results. Moisture range: 5%-40% depending on grain tested. Temperature range: 32° to 113° F (0° to 45° C). Requires 9V battery (not included). Carrying case included. 2-year warranty. **C28718V121**

agraTronix™ MT-PRO Portable Grain Moisture Tester
Direct readout for 40 different grain scales with multi-lingual display. Higher-frequency, capacitive circuit improves accuracy. Built-in calibration button improves the average of saved test results. Moisture range: 5%-40% depending on grain. Temperature range: 32° to 113° F (0° to 45° C). Requires two 9V batteries (not included). Carrying case. 2-year warranty. **C24595V121**



agraTronix™ Portable Grain Kit with MT-PRO and Hanging Grain Weight Scale
Measures moisture percent, test weight (pounds per bushel), bin capacities, and feed quality. Range: 15-70 lbs. per bushel/20-90 kg per hectoliter. Direct readout for 40 different grain scales. Built-in calibration button displays average of saved results. Moisture range: 5%-40% depending on grain. Temp range: 32° to 113° F (0° to 45° C). 9V batteries not included. **C29752V121**

BEST SELLER



Nasco Digestion Analyzer

Evaluates rapid by-product passage and cow performance by evaluating livestock manure. Includes 22-qt. plastic bucket (13" dia. x 14"H with handle and lid), 3 stainless steel screens (1 each with hole sizes 3/16", 1/8", and 1/16"), ladle, 2-qt. plastic scoop, adjustable sprayer nozzle (color may vary, no choice) with cushion grip, and pair of latex-free gloves. **C26728V121**

ONLY AT NASCO

Best Harvest Crop & Silage Moisture Hi-Temp Tester

0.1% accuracy for most crops, hay, and silage. Tests in about 20 minutes. Uses a faster version of the Official Evaporation Method as approved by the USDA. Stainless steel. Comes with specimen container and instructions. 110V. **C30359V121**

J-Scale Digital Scale.

300 g capacity. Accuracy: 0.1 g. Tare and zero functions. Reads in grams, ounces, and pennyweight. Platform: 5 1/4" dia. Batteries included. **C30343V121**



agraTronix™ Windrow Portable Hay Moisture Tester

Measures hay moisture content right in the windrow. Add loose hay or forage to 5-gallon bucket (not included), insert handheld tester, and press button for measurement. Time for result: 30-60 seconds. Moisture range: 13%-70% depending on hay tested. 9V battery not included. **C29668V121**



agraTronix™ DHT-1 Portable Hay Moisture Tester

One-step push-button operation gives digital readout of moisture percentage or temperature within 60 seconds. 18" detachable probe has a rigid handle. Factory calibrated — no adjustments necessary. Moisture range: 14.4%-44% depending on hay tested. Temperature range: 32° to 225° F (0° to 107° C). Requires 9V battery (not included). 1-year warranty. **C13179V121**



OVA-Easy 100 Advance II Cabinet Incubator

Capacity of 72 chicken eggs, but fits a wide range of egg sizes from quail to goose. Has humidity readout and temperature alarms. Programmable turning. Double-glazed observation door. Energy-efficient insulated cabinet. Digital control system (temperature and humidity readout and menu-driven options). Laminar airflow to eliminate cold spots. 2-year warranty. Allow extra delivery time. **Z48257V121**

Humidity Pump. Cabinet incubator upgrade provides fully automatic humidity control, keeping humidity level at level set by user irrespective of changes in room humidity to overcome problems that can commonly lead to eggs failing to hatch (especially in the later stages of incubation). Includes an external water reservoir, eliminating the chances of harboring bacteria. **Z46216V121**



Nesting Box

Made of high-density polyethylene, easy to clean and will not rust. Slightly sloped floor allows water to drain through a weep hole in back. Mounts to 16" on-center studs. Can be placed on shelf or hung on peg hooks. 16 1/2" L x 15 1/4" W x 19 1/2" H. 1-year warranty. **C31563V121**

BEST SELLER

Galvanized Chick Brooder Box

A safe observatory for brooding baby chicks up to 4 or 5 weeks old. Metal arm holds a brooder lamp (not included) over one side of the brooder. Wire mesh floor has openings 3/16" apart. Dropping pan slides in and out under wire mesh floor. Easily assembled using flathead screw-driver and included hardware. 39 3/8" L x 18 1/16" W x 23 3/8" H. Allow extra delivery time. **C35710V121**



A. Brower® Chick and Quail Brooder

Chick capacity: 125 day-old, 100 one-week-old, 100 two-week-old, 65 three-week-old, 50 four-week-old. Quail capacity: 100 to fourth week. 3-liter bottle drinker. 580 cubic inch capacity feeder. 1/2" PVC-coated wire floor. Thermostatically controlled heater. 250 watts. 42"L x 33"W x 19 1/2"H. 110V AC. Allow extra delivery time. **C10732V121**

B. Standard-Size Poultry Coop

Lightweight, durable, high-density polyethylene. Designed for better ventilation, reducing stress during transport. Large spring-latch door is located in the center of the coop. Coops interlock top and bottom for easy stacking and storage. Outside dimensions: 35" x 23" x 10 1/4". Door opening: 14" x 14 1/4". Allow extra delivery time. **C14521V121**

C14521V121

C. 10-Section Metal Nests

These units combine economical pricing, quality and functionality. A square-hole nest made from 28-gauge galvanized steel. The nest is 28"H x 12"D x 60"L, with openings are 8" x 11 3/8". Easy to clean and assemble with removable bottoms. Vertical ends are punched for ventilation. Rivet gun required for assembly. Allow extra delivery time. **C30299V121**

D. 6-Hole Laying Nest Unit

Metal nesting unit incorporates all of the advancements in modern nest design, including plastic nest bottoms and perches. Two-tier construction. Recommendation: 8-10 birds per hole of nest. 36"L x 12"W x 34 1/2"H. Assembly required. **C24569V121**

C24569V121

A. Nasco Chicken Embryology Poster Set
Set of 3; 21" W x 7 1/4" H.
SB4287V121

B. Hova-Bator™ Electronic Thermostat Incubator with Circulated Air
Shows temperature in ° F/° C. Holds 50 chicken/duck eggs or 130 quail eggs without turner. 18 1/2" L x 18 1/2" W x 9 1/2" H. 110V AC.
C35049V121

C. Hova-Bator™ GENESIS Incubator with Circulated Air and LCD Display
Shows temp and humidity (° F/° C). Self-regulating thermostat. Built-in sensors prevent egg "burn up." Holds 50 chicken/duck eggs or 130 quail eggs without turner. 18 1/2" x 18 1/2" x 9 1/2". Input: 100-240V, 50/60 Hz. Output: 12V DC. 1.5 3,000mA. TUV listed.
C25502V121
Hova-Bator™ Sanitary Plastic Liner. Fits all Hova-Bators produced after January 2004.
SB3320V121

D. Brinsea Maxi II Egg Incubators
Provides the essential environment for successful egg hatching. Detailed airflow for even heating.
Maxi II Eco. Holds 30 hen eggs (or equivalent).
C34166V121
Maxi II Advance. Auto egg turning. Auto stop 2 days before hatching. One rotating disc for 14 eggs of all sizes up to duck.
C34167V121
Maxi II Advance EX. Fully automatic humidity control with integrated water pump, programmable auto egg turning, and temp alarms. One disc for 14 eggs of all sizes up to duck, and 1 disc for 40 smaller eggs.
C34168V121

E. Maxi II Advance Classroom Pack
Incubation and embryology kit for elementary and middle school. Includes lesson plan CD-ROM manual, Maxi Advance II Incubator (C34167V121, above), and all needed equipment.
C34169V121

F. Brinsea Ovation Egg Incubators
Fully digital and automatic. Dual airflow system. Eggs are held in tilting egg carriers; standard egg carriers are supplied for hen eggs of all sizes. Anti-microbial plastics.
Ovation Eco. Displays temp and auto egg turning.
C34170V121 28-egg incubator
C34172V121 56-egg incubator

Advance. Also displays humidity and temp alarms. Allow extra delivery time.
C34171V121 28-egg incubator
Z50111V121 56-egg incubator

Advance EX. Fully automatic humidity control with integrated water pump. Allow extra delivery time. 🐣
Z50109V121 28-egg incubator
Z50112V121 56-egg incubator

G. Advance Classroom Pack. Incubation and embryology kit for elementary and middle school. Includes lesson plan CD-ROM manual, 28-egg Ovation Advance Incubator (C34171V121, above), and all needed equipment. Allow extra delivery time. 🐣
Z50110V121

BEST SELLER

HATCHING MADE EASY
Keep fertilized chicken eggs warm and protected until they are ready to hatch



Nasco Classroom Incubator Kit

Everything you need to incubate and hatch eggs, plus teaching materials for classroom instruction. Kit includes Hova-Bator Incubator with Picture Window (SB15219), a Hova-Bator Automatic Egg Turner (SB12143), Nasco Chicken Embryology Poster Set (SB42872), and Cool-Lite Tester. Available in 240V through special order.

C28125V121

Nasco Classroom Brooder Kit. Complete brooder kit to continue healthy growth of chicks. Kit will hold 4-6 chicks comfortably until 3 weeks of age. Kit includes pet home (24" L x 12" W x 12" H), plastic poultry waterer, plastic waterer base, 5 lbs. of chick feed, and clamp lamp (100-watt bulb not included).

C18770V121

C18772V121 Extra chick feed, 5-lb. bag.

Fertile Longhorn Chicken Eggs – Live. Eggs arrive ready for incubation. Please specify Monday or Tuesday shipping date when placing order. Some eggs may not hatch or may break in transport. 12 eggs. Allow extra delivery time. 🐣

Z10237V121

Circulated Air Model with Automatic Turner
SB26513V121

ONLY AT NASCO

D



E



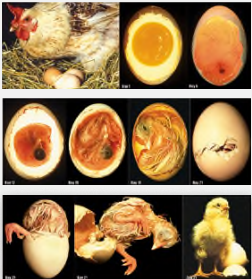
F



G



A



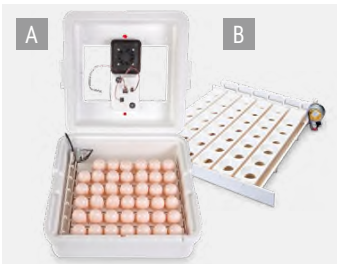
ONLY AT NASCO

B



C





A. Little Giant® Deluxe Circulated-Air Incubator with Automatic Egg Turner
Styrofoam™ maintains 99.5° F temp. Digital control board. Two viewing windows (4" x 8"), thermometer, and moisture rings. Built-in fan. Automatic egg turner. 18" L x 18" W x 9" H. Large egg cups. Six egg rails. Holds 41 large chicken or up to 120 bantam or quail eggs. Doesn't hold goose eggs.
C34826V121
Standard Circulated-Air Incubator. Same as above, except egg cups and turner are sold separately.
C19555V121

B. Auto Egg Turner. Use with C19555V121, above. Includes motorized turner, large egg cups, and 6 egg rails. Holds 41 chicken eggs. Doesn't hold goose eggs.
C19556V121

C. Pro Series Digital Circulated-Air Incubator with Automatic Egg Turner
Display shows temp, humidity, and days to hatch. Heater heats to 100° F within minutes. Adjustable days to hatch countdown. High/low temperature notification light. Integrated fan pulls in and circulates fresh air. Egg turner holds 41 eggs, including large duck and goose eggs. Has egg candler. Plastic shell. Made with recycled and insulating polystyrene foam.
C33567V121

D. Automatic Egg Turner Only. Use with C33567V121, above. Turns eggs completely every 4 hours. No assembly required. Dishwasher safe (egg rails). 41 large egg cups. Thermometer.
C33025V121



E. Digital Circulated Air Incubator
Digital display shows temperature, humidity, and days to hatch. Heater heats to 100° F in minutes. Adjustable days to hatch countdown is preset at 21 days. Temperature alarm flashes when outside of range. Fan kit pulls in fresh air to stabilize temperature and improve hatching. Holds up to 45 chicken eggs, 115 quail eggs, 90 pheasant eggs, or 41 turkey/duck eggs. Includes additional probe thermometer. Made with recycled and insulating polystyrene foam.
C35729V121

F. Hova-Bator Incubator — Still Air
Gently warms eggs until they hatch. Thermal plastic maintains constant humidity. Holds up to 42 chicken eggs. Includes thermometer, thermostat, 2 observation windows (4" x 5"), and plastic sanitary bottom liner. 18" L x 18" W x 7 1/2" H. 110V, 25 watts.
C15905V121

The Incredible Incubator Thermometer™. Measures ° F/° C. Glass secured to metal plate. 5" W x 2 1/4" H.
C33331V121

G. Hova-Bator Automatic Egg Turner
Six egg racks, each holds 7 eggs (42 total). Holds any size from small partridge egg up to large chicken egg. **Will not turn turkey eggs.** 15 1/4" x 15 1/4" x 3 1/4". Fits all Hova-Bator Incubators, including Nasco numbers C35049V121 and C25502V121, all on p. 30, and C15905V121, above. TUV listed.
SB12143V121

Nasco Incubator Kit. Includes Hova-Bator Incubator with Circulated Air (C35049V121, p. 30) and Hova-Bator Automatic Egg Turner (SB12143V121, above).
C17015V121



H. Sportsman Model #1502 Circulated-Air Incubator with Pre-Set Electric Thermostat
Complete incubator and hatcher offers an accurate digital thermostat with LCD display of temperature and humidity. An on-board computer monitors systems and the environment every second to keep itself updated and to share this data. Electronic egg turning control, audiovisual indicators, and a standard easy-view door highlight a number of features. In addition to having 3 automatically turned racks, it has a hatching tray in the bottom of the incubator. Includes digital command center thermostat, 3 turning racks, plastic hatching tray (no cover), moisture pan with 2 wick pads, samples of paper egg trays (1 each for quail and chicken/duck), and instruction booklet. Total capacity with plastic trays: 1,368 quail eggs (set and hatch 250 per week) or 216 larger eggs, such as duck, etc. Each turning rack holds approximately 496 quail eggs, 118 chukar or pheasant eggs, 90 small chicken eggs, 40 goose eggs (not over 3 3/4" overall height), or 60 duck eggs. 30 1/4" D x 15 3/4" W x 31 1/4" H. Metal setting trays and plastic egg trays not included. 110V AC, 225 watts. Available in 240V through special order. Allow extra delivery time. 🐔
Z14570V121



Auto Poultry Waterer with Cover
3/4" hose attaches to standard garden hose, providing a continuous flow of fresh water. Automatic float controls water level; no spilling or overflow. Oversized cover prevents roosting and keeps debris out of the water. High-density polyethylene bowl. Polypropylene cover attached to a metal bracket. For adult birds. 14" L x 12 3/4" W x 10 1/2" H. Holds 5 quarts. 1-year warranty.
C32322V121



See-Through Plastic Egg Cartons
For specially, colored, and premium eggs. Eco-friendly. Holds small to extra-large size eggs.
6-Egg Cartons
C32755V121 Pack of 50
C32583V121 Pack of 200.

12-Egg Cartons
C32754V121 Pack of 25
C32584V121 Pack of 100



Cage with Blue Plastic Tray
Easy-to-clean, deep plastic tray helps contain bedding and litter for less mess. Ideal for transporting bantam and standard-size chickens to exhibitions. Top and front door access. Rounded corners for safety. Dual handles for transport. 40" L x 19" W x 21" H. Allow extra delivery time. 🐔
C28247V121



Automatic Waterer Poultry Founts
Large-capacity plastic waterers are durable and easy to fill. Vacuum-seal creates an automatic water flow. Jar snaps compactly into base.
C19442V121 3 Gallon
C19443V121 5 Gallon
C29887V121 7 Gallon



Incredible Egg Wash Powder
Alkaline, chlorinated, foam-controlled powder cleans and removes stains from egg shells, plus limits foam accumulation in egg washing machines. Safe to use, USDA approved. Highly concentrated. 16 lb.
C26867V121




Egg Cleanser
Blend of all-natural enzymes attacks organic stains and protein residue for effective removal of contaminants. A great alternative to chlorine. 33.9-oz. bottle.
C30529V121



Galvanized High-Capacity Poultry Feeder
Dispenses up to 25 lbs. of mash, pellet, or crumble feed. Easily mounts on wall or frame. The specially designed chute provides a steady food flow while the feed saver grid prevents the bottom from overflowing and keeps birds from sweeping feed out of unit. Made of tough, galvanized steel. Comes completely assembled.
C34312V121



The Incredible Egg Washer
Uses water and bubbled air to gently clean the eggs. No more broken eggs by hand scrubbing too hard. Small enough to use in any kitchen, yet works for the small farmer's egg production. Capacity: 8 dozen eggs. Includes egg washer, 10" egg basket, egg brush, egg scrubber, 1 lb. of egg wash powder, 24" combination air chuck/anti-backwash hose, support stand, 7 1/2" and 8 1/2" weight disc, and complete instructions. Requires 1.5 cubic feet of air per minute from an air compressor (not included).
C26865V121
Egg Basket. Holds 8 dozen eggs. 10" dia.
C26869V121



Allflex® Global Hog Male Tags
Large panel holds more management information. Longer male stem allows for higher tag placement in ear. Lays flat to resist snagging and chewing. Often used in combination with Global and Tamper-Proof small female tags. Packaged standard with Global small female.


Special Order Colors Allflex® Global Tags
Note: Color availability may vary by tag type.

Blank Tags

Color	Hog 2 1/4" x 1 1/2"
Yellow	C25689V121
Blue	C25691V121
White	C25692V121

Numbered Tags

Color	Hog 2 1/4" x 1 1/2"
Yellow	C25695V121
Orange	C25696V121
Blue	C25697V121
White	C25698V121
Red	C25699V121



C25689V121 C25697V121

Ordering Numbered Hog Tags
Tags numbered 1 to 100 are stocked in packages of 25. To facilitate ordering, we have assigned letter codes for numbering sequences. **NOTE:** Please allow extra delivery time for tags numbered over 100. **Personalized tags cannot be returned for credit.**
Packaged in sequential numbers and can only be ordered as such. Hog tags also available in pink, purple, and magenta by special order.

Hog Tags:
(A) 1-25 (B) 26-50 (C) 51-75 (D) 76-100 (Z) 101-1,000
Indicate number series desired by letter code(s): C25695(A-D)V121 Hog, Yellow, 1-100. Specify numbers 101 and over. Must be ordered in multiples of 25.



Water Master Cups
No wrinkles or sharp edges. Made of stainless steel for easy cleaning and longevity. Nipple position allows better water consumption and minimizes water overflow. Mount 4" off floor.

A. Complete Nursery Water Master Cup. For 13-lb. to 77-lb. pigs; up to 30 pigs per cup. Includes water cup, 48" bent pipe, nipple, and bolts/nuts. C34674V121

B. Nipple Only with Rubber Spring. Use with Nursery Water Master Cup. C34677V121

C. Complete Wean-to-Finish Water Master Cup. For 7-lb. to 280-lb. pigs; 15 to 20 pigs per cup. Includes water cup, nipple, and bolts/nuts. C34679V121



Stanfield® Heat Pads
Inexpensive to operate; will reduce heating costs. Pads provide a uniformly warm surface which is 30° to 35° F above air temperature. Nonslip pads work well on either slat or solid flooring. Completely water resistant, 100% flame retardant. Ultra heavy-duty fiberglass-reinforced plastic is 3/8" thin. Installation instructions included. 10' L electrical cord. 110-120V. Certified to UL, CSA, IEC, CE, and PSE standards. Recommended to use with Stanfield® Power Control (C08090, available online). 1-year limited warranty. Available in 240V through special order.

2' x 3' Pad. Use in a twin crate. 160 watts. C08087V121

2' x 4' Pad. Use in a twin crate. 200 watts. Allow extra delivery time. C08088V121



V-Cut Ear Notcher
High-quality, stainless steel ear notcher. Cuts a "V" notch 1/4" W at the base, 3/8" L. C13668V121



Y-TEX® Tagger
Use with all Y-TEX® two-piece, ID, and insecticide tags. Strong return spring, 2:4:1 mechanical advantage, spring clip, wide-open throat never pinches, strong applicator pin, and straight-line application. C15848V121



USDA Preliminary Cutability Grade Ruler
Developed for the USDA, these probes are 1/2" x 6", 0.02" stainless steel, rectangular shape with square corners, and no holes. Processed on one side with depressed black enamel figures and satin-finished back with pocket clip. Graduations on one end are 1/16", opposite end is .04". C02615V121



Kane Heat Mat
Heat under piglets. Prevent piglets from piling and bunching, reduce stress; enable growth and weight gain. Economical; insulated bottom. Dead air space inside the mat, above the heater, aids in maintaining heat longer and reheats quicker. CSA approved. 24" x 36". 129 watts. C13611V121



Sullivan Pig Waterer with Hanger
4" dia. x 36"H PVC water tube and nipple. Holds approximately 2 gallons of water. Chains in multiple places keep animal from lifting off. Has 2 mounting height options. C32268V121



Duraflex Molded Rubber Pan
Only 4"D to prevent overturning. Molded in one piece with reinforced sides. 3-Gallon. 17" top dia. 14" bottom dia. C04272V121
2-Gallon. 14 1/2" top dia. 11 1/2" bottom dia. C18879V121



"V" Shape Ear Notchers
Provides quick, clean cut ear markings for animal identification. "V" shaped cut. Aluminum. C07792V121



Y-TEX® Tag Removal Knife
Plastic handle with stainless steel blades and blade guard. C29250V121



Swine Back Fat Probe
Stainless steel. Inserts through back fat until it strikes pork chop muscle. Read fat thickness on probe. Does not injure hog. Graduated in 10ths. C00155V121



Nipple Drinker Brackets
1/2" male pipe threads for water lines and 1/2" female threads for nipple drinkers. Galvanized steel.
C14628V121 With 26" Pipe for Single Drinker
C14629V121 With 24" Pipe for Double Drinker



Tek-Trol® Disinfectant Cleaner Concentrate
For use on ratite ranches, aviaries, swine producing facilities, equine facilities, veal barns, and calving operations. Effective against *Staphylococcus*, *Pseudomonas*, *Salmonella*, *Aspergillus*, *Tuberculosis*, viruses, fungi, parvo, and mildew. Kills HINI. Do not use in milking stalls, milking parlors, or milk houses. Gallon. C33308V121



2 1/2-Gallon Pen Waterer
High-impact plastic, rust resistant. Easy to mount. Motion and jarring will not activate the water valve. Holds 2 1/2 gallons of water and includes drinking nipple. C34004V121



Sullivan Show Pig Head Trainer
Train your hogs to drive with ease. Used for head training and training reinforcement, teaching the pig to drive with their head up. Made of extremely lightweight aluminum. 36"L. Use two head trainers for initial training and graduate to one.
C35043V121 Black **C35044V121** Blue **C35045V121** Red



U.S. Whip
The most popular pig whips on the market today. Unique, soft nylon material makes them ideal for driving hogs in the show ring. Includes a 6" lash braided into the body of the whip and a soft molded handle with a chrome ferrule and end cap.

Color	Product No.	Shaft	Length (w/o Popper)
Black	C31651V121	Nylon	36"
Blue	C31652V121	Nylon	36"
Neon Orange	C31653V121	Nylon	36"
Neon Pink	C31654V121	Nylon	36"
Graffiti	C31655V121	Nylon	36"
Fusion	C31656V121	Nylon	36"
Purple	C25087V121	Fiberglass	39"
Green	C25088V121	Fiberglass	39"



Two-Way Sorting Panels
Molded in durable, high-density polyethylene. Panels feature hand grips on top and side to make handling easier. Tough, yet easy to clean. Allow extra delivery time.
3' x 30"
C15688V121 Red
C35000V121 Black
4' x 30"
C15697V121 Red

Tips for successful show days

Spend time bonding. Students can help their pig become comfortable with them by sitting in the pen and brushing them.

Build up endurance. Two months out from the show, students can start walking around the yard three times a week for 5-10 minutes. A month out, they can walk twice a day, working their way up from 5-10 minutes to 20 minutes at a time.

Practice, practice, practice! Have students ask a parent, sibling, or friend to act as the judge and provide feedback.

A. Decker Ring O-Matic Hog Catcher
Handy, one-person use and operation. Aircraft control cable on steel handle, with self-locking feature, allows quick, easy snaring of animal. 35"L. Loop extends to 5¼" dia.
C00769V121

B. Heavy-Duty Shorty Hog Holder
Tested to withstand a pull load of up to 1,400 lbs. Heavy-gauge. Comfort-grip rubber handle with galvanized aircraft cable loop. Approximately 8"L.
C26886V121

C. Large Hog Catcher
Heavy-duty large hog catcher designed for catching and holding larger hogs. Heavy metal with hand grips and self-locking device. 37"L including cable loop.
C13375V121

D. Animal Grabber Tongs
Custom-made rubber jaw cushions with air pockets to create a softer grip. Cast aluminum with a special mix of titanium and magnesium for greater strength. Stainless steel aircraft-grade cable and components. No exposed cables or springs. 38"L.
C23594V121

E. Hot-Shot® Sorting Paddles
Red plastic paddle head creates a visual barrier for livestock. Animals respond to the sound of BBs inside paddle. Comfortable golf club-style grip and vinyl covering.
C26462V121 42"L
C26463V121 48"L

F. Rattle Paddles
Animal-friendly paddles help move livestock easily. Rubber grip for better handling and comfort. Steel balls trapped in the paddle allow you to move animals by sound alone. Shatterproof ½" extruded fiberglass core with a rubber handle. One-piece construction.
C34272V121 37"L
C34271V121 47"L

Flexcane
Ultra-high molecular weight polymer. 38"L round cane with curved handle and no-slip grip. Hot pink. Lifetime guarantee. NOTE: Cannot be burned.
C14364V121



Extra-Heavy Round Cane
Unlacquered wood cane for showing livestock. 36"L. NOTE: Cannot be burned.
C07436V121 -

36"L Octagon Canes
C00108V121 Medium-weight stockman. 7/8" dia.
C00109V121 Medium-weight stockman. Lacquered.
C07434V121 Elephant 1 1/8" dia.



Super Maxi
3" x 4 3/4"

Maxi
3" x 3 3/4"

Large
2 1/4" x 3"



Proper ear tag placement



Studs included



Allflex® Global Tags
Made of polyurethane. Flexible for years and seasonal temperature changes. A retention collar allows for increased flexibility and motion. Laser beams etch the markings into the ear tags underneath the dark ink overlay, making the markings permanent. Self-piercing tip reduces risk of infection. Application with Allflex® Universal Total Tagger. Packaged with Global Small Male. Pack of 25 tags.

Blank Tags (with Studs)

Color	Super Maxi	Maxi	Large
Yellow	C23212V121	C23218V121	C23224V121
Orange	C23213V121	C23219V121	C23225V121
White	C23214V121	C23220V121	C23226V121
Red	C23215V121	C23221V121	C23227V121



Plastic Auction Sale Tags
3" x 2 1/2" tags have a 3/16" hole for easy attachment with a (fishhook) hog ring. Hole will accommodate key rings, bead chains, elastic bands, strings, etc., for non-livestock serial marking. Set of 1,000 tags. Yellow.

Numbered 1-1,000.
1 3/8"H black numbers on both sides.
C13632V121

Blank. Self-number with felt pens or nylon-tip markers.
C13633V121



Tag Placement Cow Ear Model
Learn proper placement of ear tags using this realistic model molded from an actual cow's ear. Cartilage and other anatomical landmarks are readily visible. Use permanent green marker to show proper application areas and red permanent marker to designate improper locations. You can even apply actual ear tags to the ear.
7 1/2" H x 4 1/4",
C26251V121


ONLY AT NASCO



AWR300 Stick Reader
Portable, RFID scanning device. The AWR300 is the next generation EID stick reader and features a 8GB memory with a large backlit display. Durable construction boasts an ingress protection rating of IP67. Lightweight, well balanced and comfortable in your hand. Key features include: long read range (12") for all HDX, FDX-B ear tags to ISO Standard 11784/11785; battery life up to 12 hours; 8GB memory for up to 1 million records; record tag numbers with time stamp and additional information; built-in real-time clock displays date and time; and connects to external devices using WLAN, USB or Bluetooth® connection. Allow extra delivery time. 🚚
Z48018V121



A



B



C




D



E



F



G

A. Identification Duct Tape
Identify cows with mastitis, staph infections, slow milkers, etc. 60-yr. roll.

Green	C27469V121	Blue	C27471V121
Yellow	C27470V121	Orange	C28050V121

C. Dremel 120V Engraver
Engraves on Ritchey dual-colored tags. Includes 1/4" high-speed cutter bit. 35,000 rpm.
C35292V121

D. Sper Clinical Portable Refractometer
Works in ambient light with no battery or other power source. Use anywhere and get results immediately. Includes rubber-coated hand grip that insulates the test solution, covered eye piece and bright defined scale with measurements. Measures protein concentration, urine specific gravity, or gives the refractive index using a few drops of blood serum, plasma, urine, or albumen. 6 3/4" x 1 1/2". Serum albumen scale range is 1-12 g/dl, resolution is 0.2 g/dl, and accuracy is ±0.2 g/dl. Urine specific gravity range is 1.000-1.050, resolution is 0.002, and accuracy is ±0.002. Refractive index (nD) range is 1.3330-1.3600, resolution is 0.0005, and accuracy is ±0.002. Includes a hard carrying case, calibration solution, pipettes, and calibration tool.
SB48374V121

E. Universal Total Tagger (Red)
Applies Allflex® Tamper-proof and EID tags. Comes with 1 red blunt pin and 1 black insert.
C12355V121

Replacement Pin for Universal Total Tagger Pin (Red Blunt). Applies Allflex® Global, Tamper-proof, and EID tags.
C23768V121

F. Allflex® Total Tagger™ + Applicator
Ideal for mixing chemicals and milk replacer. Stainless steel whisks are fused into a solid, easy-clean handle.
C35687V121 12"
C35688V121 18"
C35689V121 24"

WHIRL-PAK®

results you can trust

WHIRL-PAK® Sample Bags

Collect samples of milk, feed, soil, and more. Strong, sterile, and leakproof. Polyethylene bags carry solids or liquids to a lab for testing. Puncture proof tabs, which means the tape on the tab extends past the ends of the wire, covering the sharp points. Sterilized with ethylene oxide gas, which makes the inside completely bacteria-free. Use once and dispose. Unlike glass bottles, they are unbreakable, which means easier handling for milk haulers and lab techs. To close, simply whirl the bag 3 or more times and bend the tabs onto the bag.

NOTE: Call, email, write, or fax for quantity prices on WHIRL-PAK® bags.

Product No.	Capacity	Dimensions	Style	Bags/Box
B01064V121	2 oz.	5"L x 3"W	Write-On	500
B01065V121*	18 oz.	9"L x 4½"W	Write-On	500

*Bags should not be used at temperatures above 180° F (82° C). Bags can be frozen to any temperature, including liquid nitrogen temperatures down to -346° F (-210° C). Careful handling required after freezing.



CMT Starter Kit

Directs attention to individual mammary quarters that are secreting milk at high cell count. Cell content is normally high at both extremes of lactation, therefore, CMT should not be used before the third day after calving. Includes paddle, one 12 oz. bottle of reagent in dispenser bottle, color plate, and directions. Will do 350 tests.

C06059V121



Complete A.I. Kits for Cattle

Removable accessories tray and sheath storage compartment in the cover. Includes technician box with tweezer and cutter, pack of 100 gloves, 12V/120V Cito Thaw Unit (choose kit with either Fahrenheit or Celsius Thaw Unit), two 8-oz. bottles of lubricating jelly, pack of 50 sheaths with blue insert (unslit), and 1 barb-style insemination gun.

C34772V121 Fahrenheit A.I. Kit

C34771V121 Celsius A.I. Kit

Nasco Artificial Insemination Kit for Cattle

Everything you need for insemination. The 18½" L x 8"W x 8¾"H stainless steel carrying case conveniently holds one package of paper towels, two 8-oz. plastic squeeze bottles, package of 50 sheaths with blue insert/unslit barb-style insemination gun, one wide-mouth Thermos®, straw cutter, pack of shoulder-length plastic gloves, and an insemination tube carrier with cap. Includes thermometer with range of 0° to 220° F.

C11019V121



Dairy Towels

Absorbent, strong, economical, single-use towels. Excellent for drying udders before milking. Box of 110, single-fold, 9" x 10½" towels.

C10906V121



Floating Scrub Brushes

Polyester bristles are set in a structural foam block that will not crack, split, absorb water, or harbor bacteria — but will float in liquid. Oval-trimmed polyester bristles are 1¼"L. Block is 8½"L overall.

C34177V121



Long-Handled Gong Brushes

Poly utility scrub brush with 20"L handle. 6" x 5½" face, 2" oval smooth block. Bristle is synthetic palmyra. 1¼" bristle trim. Stiff bristles.

C05963V121



Polansky Vaginal Speculum for Cattle

For wide exposure. Features butterfly screw with 2 blades on top, for a total of 3 blades. Stainless steel. 13¾" (35 cm). Max. opening: 4" (10 cm).

C27272V121



Nasco Preserved Reproductive Tract of Cow

Ideal for instruction of artificial insemination and the study of female reproductive system. Complete tract including ovaries, oviducts, uterus, vagina, bladder, and external organ. Preserved with NASCOGuard®, an odorless and nontoxic solution (not formaldehyde). Can be used repeatedly for long periods of time.

LS02798V121



All-2-Mate® Barb-Style Insemination Gun

Use ¼ cc and ½ cc semen straws. For use with unslit sheaths. Packaged in a clear protective tube. 18"L.

C31164V121



Mr. Tuff Pails

Withstand corrosion, rust, dents, and cracks. Can be steam sterilized. High-density polyethylene with a leakproof lid. White.

1-Gallon Pail. Plastic handle. C33733V121

Lid for 1-Gallon Pail. Tear-tab cover. C33734V121

2-Gallon Pail. Plastic handle. C33735V121

Lid for 2-Gallon Pail. Tear-tab cover. C33736V121

3½-Gallon Pail & Lid. Galvanized wire bail with plastic grip. C05575V121

5-Gallon Pail. Galvanized wire bail with plastic grip. C05574(A)V121

5-Gallon Pail & Lid. Galvanized wire bail with plastic grip. C05574V121

Teach basic cow artificial insemination without the entire cow

ONLY AT NASCO



Cow Reproductive Organs Model

Natural color rubber model of uterus, ovaries, cervix, etc. Actual size. Includes comprehensive guide showing correct names, descriptions, and size for each part.

C06117V121

Eazi-Breed™ CIDR® Cattle Inserts

Progesterone inserts synchronize return to heat and tighten estrus synchronization. Induce fertile estrus, regardless of the stage of cycle. More animals become pregnant in the first 2 cycles after voluntary waiting period. Improved efficiencies in labor management. Each contains 1.38 g of progesterone in silicone molded over a nylon spine. Pack of 10. Applicator not included. Not for sale in California.

C25746V121

Cattle Applicators

C25747V121 Long — C28647V121 Short



BEST SELLER

A

ONLY AT NASCO

Slimline Show Halter Size Guidelines

Newborn	Up to 250 lbs.	Cow/Steer	1,000 lbs. - 1,200 lbs.
Calf	250 lbs. - 750 lbs.	Large Cow/Bull	1,200 lbs. and up
Yearling	750 lbs. - 1,000 lbs.		

B

ONLY AT NASCO

Nasco Round-Strap Show Halters

Enhance the look of your show animals. Two buckles for adjusting head strap. Round cheek and nose pieces. Matching bright nickel-plated chain (18"-20"). Chain link size: 1" x 1/2". With 1"W leather head strap. 40" x 1" leather lead strap. Best on beef cattle.

Size	Black	Chocolate	White
Newborn	C10747V121	—	—
Calf	C02570V121	C11703V121	—
Yearling	C02284V121	C11702V121	—
Cow/Steer	C02285V121	C11705V121	C02565V121
Large Cow/Bull	C12304V121	C12305V121	—

A. Nasco Slimline Double-Buckle Round-Strap Show Halters

Quality halters made 1/4" thinner to show off the animal's head. The thinner nose piece gives the animal a more refined look. Nickel-plated hardware, swivel snaps, and 2 adjustable buckles with a finer-link chain than other halters. 54" x 3/4" lead strap.

Size	Black	Chocolate
Dairy & Beef Newborn	C24091V121	C24092V121
Dairy & Beef Calf	C15950V121	C13362V121
Dairy Cattle & Beef Heifers Yearling	C15951V121	C13364V121
Dairy Cattle Cow/Steer	C15952V121	C13363V121
Dairy Cattle Large Cow/Bull	C18979V121	C18980V121

B. Nasco Round-Strap Show Halters

Enhance the look of your show animals. Two buckles for adjusting head strap. Round cheek and nose pieces. Matching bright nickel-plated chain (18"-20"). Chain link size: 1" x 1/2". With 1"W leather head strap. 40" x 1" leather lead strap. Best on beef cattle.

Size	Black	Chocolate	White
Newborn	C10747V121	—	—
Calf	C02570V121	C11703V121	—
Yearling	C02284V121	C11702V121	—
Cow/Steer	C02285V121	C11705V121	C02565V121
Large Cow/Bull	C12304V121	C12305V121	—

C. Fully Adjustable Yearling and Cow Halters

Fits yearling to full-grown cattle. 12 1/2" cut of 1/2" dia. polypropylene rope. 7' lead rope. Rot and mildew resistant.

Black	C12269V121	Purple/Black	C27926V121	Red/White	C34383V121
Red	C13411V121	Black/Orange	C27927V121	Blue/White	C34384V121
Blue	C13412V121	Hot Pink/Black	C27928V121	Black/Green	C34385V121
Teal Green	C34849V121	Lime Green/White	C27929V121	Black/Blue	C34386V121
Purple	C24091V121	Lime Green/Pink	C27930V121	Black/Lime	C34387V121

D. Breaking, Training, 3-In-1 Halter®

Fully adjustable; made of 5/8" dia. solid braided polypropylene rope for extra strength. Rope has approximately 4,000 lbs. breaking strength. Royal blue. Chain for maximum control. C13058V121

C

ONLY AT NASCO

E. Nylon Halter

Designed to be left on the show animal. Lead may be attached. Black. C15157V121 Yearling C18188V121 Large Cow/Bull C15158V121 Cow/Steer

F

ONLY AT NASCO

F. Security Tie Neck Rope

18-strand, security tie of durable plastic twine. 5/8" dia. rope has a 7' to 8' adjustable lead. One end is finished with a crown knot, the other snaps into a metal ring. 10 1/2"L. C09877V121

ONLY AT NASCO

Nasco Holstein Weigh Tape

Measures heart girth to estimate animal weight. Uses a formula that reflects the taller and leaner Holsteins that are being bred today. Features inches/pounds and centimeters/kilograms. Printed in both English and Spanish, with helpful livestock tips included. Reads weights from 77 to 2,125 lbs. Overall calibrations: 277 cm, 985 kg. 108"L x 2"W. C15907V121

ONLY AT NASCO

Weight-By-Breed Dairy Management Tape

Scales for Holsteins, Guernseys, and Jerseys. Greater accuracy through updated weight and heart girth relationships. Use to determine the breeding weights, average first calving weights, and for medication dosage. Figures 57 to 1,975 lbs., on heavy Tyvek® plastic, 108"L, doubled and sewn, with aluminum ends. C06070V121

ONLY AT NASCO

Fight Bac®

Test disinfectant for the control of mastitis is safe and effective under NMC guidelines. Sanitary, since there is no chance to spread infection by a dirty teat dip cup. 22-oz. aerosol can is the same as using 1/2 gallon of teat dip. One can will treat 300 cows. C16208V121

ONLY AT NASCO

Nasco Measuring Stick for Beef or Dairy Cattle

Measures both inches and centimeters. Measures height for beef or dairy cattle. Provides accurate measurement at the hip or shoulder by simply lowering the sliding crossbar. Built-in spirit level. Folds and snaps together for compact storage. 64". Lowest measurement is 27". C11503V121

ONLY AT NASCO

Clear Herd Test Bucket

Clear polycarbonate material allows you to view color, quality, quantity, and flow of milk. Easily emptied and cleaned through the large 7 1/2" dia. neck. Strong carry handle and wide base for stability. Capacity: 72 lbs./32 liters. 15" x 15" x 19". C32582V121

ONLY AT NASCO

Bucket Milker Assemblies (for Dairy Cows)

Assembly consists of a stainless steel bucket, De Laval-style high-capacity standard claw, De Laval-type Interpulse alternating pulsator, O6-style shells, and all necessary rubber goods. Allow extra delivery time. Z10783V121 65-lb. capacity - Z15668V121 80-lb. capacity

ONLY AT NASCO

Udder Comfort™ Lotion

A natural lotion made with a unique blend of essential oils to quickly soften and soothe. For managing udder condition without discarding milk. Apply evenly onto affected quarter after milking, repeat 2-4 days as needed. White lotion dries clear. 10-oz. (300 ml). White. Dries clear. C27560V121

ONLY AT NASCO

Dr. Larson's™ Derma-Mint™

Contains 35% peppermint oil which is reported to improve udder health by increasing blood circulation and reducing inflammation and edema in the fresh cow. Fast acting, safe, mild, non-greasy, and pleasant smelling. No antibiotics in Derma-Mint™ so there is no concern of withholding products due to milk or meat residues. 500-ml hook bottle. C28884V121



Sheep Trimming Stand
Made of 1" square tubing; platform framed with 1½" angle iron; floor is ¾", 9-gauge flat expanded metal; neck reach is 1¼" square tubing; and head piece is formed of one-piece steel with plastic chain. Deck: 48" x 20". (Side safety rails available separately.) Adjustable neck reach. Head piece adjusts 0"-8" from 19"H deck. 1-year warranty. Allow extra delivery time. 🐾
Z15191V121



Deluxe Portable Sheep Trimming Stand
Made of 1" square tubing; platform framed with 1½" angle iron; floor is ¾", 9-gauge flat expanded metal; neck reach is 1¼" square tubing; and head piece is formed of one-piece steel with plastic chain. Deck: 48" x 20". (Side safety rails available separately.) 1-year warranty. Curved neck reach, fold-up ramp, and wheel kit. Deck: 17"H. Allow extra delivery time. 🐾
Z18104V121



A. Nasco Leather Sheep Halter
ONLY AT NASCO
Designed exclusively by Nasco, features a round strap nose band, ¾"W leather crown top strap and lead, with a ¾" x 45" lead with snap and chain, and a bright nickel finish. 9" nose band. Black.
C11675V121



B. Polypropylene Sheep Halter
8'L sheep halter made of three-strand, twisted, monofilament polypropylene. ¾" dia. 6" nose band. Ends are heat fused and end whipped. No metal clips. Black.
C12432V121



C. 3/4" Hand Shears
Good for head and leg work. Double bow, hollow ground. Blade: 3½"L. Overall: 9"L.
C24660V121



E. Saboten Hoof Shears
Compact, lightweight. Easy-action handles and sharp blades. Nonstick blade coating prevents rust and gives friction-free, smooth clean cuts. 7¼"L.
C17016V121

A. Nasco Leather Sheep Halter
Designed exclusively by Nasco, features a round strap nose band, ¾"W leather crown top strap and lead, with a ¾" x 45" lead with snap and chain, and a bright nickel finish. 9" nose band. Black.
C11675V121

B. Polypropylene Sheep Halter
8'L sheep halter made of three-strand, twisted, monofilament polypropylene. ¾" dia. 6" nose band. Ends are heat fused and end whipped. No metal clips. Black.
C12432V121

C. 3/4" Hand Shears
Good for head and leg work. Double bow, hollow ground. Blade: 3½"L. Overall: 9"L.
C24660V121

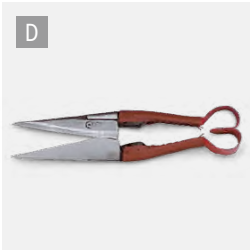
D. Super-Duty Rigged Sheep Shears
High-quality steel with double hollow ground 6½" blades. Red enameled handles are taped and covered with leather to provide a better, more comfortable grip. Has wood blocks to keep from clicking together. 13¼"L.
C13213V121

E. Saboten Hoof Shears
Compact, lightweight. Easy-action handles and sharp blades. Nonstick blade coating prevents rust and gives friction-free, smooth clean cuts. 7¼"L.
C17016V121

F. GrowTech Hoof Trimming Shears
ARS blades are sharper, retain sharpness longer, and provide durability and balance. Ergonomic design.
C27418V121 2"L blades
C28947V121 3"L blades



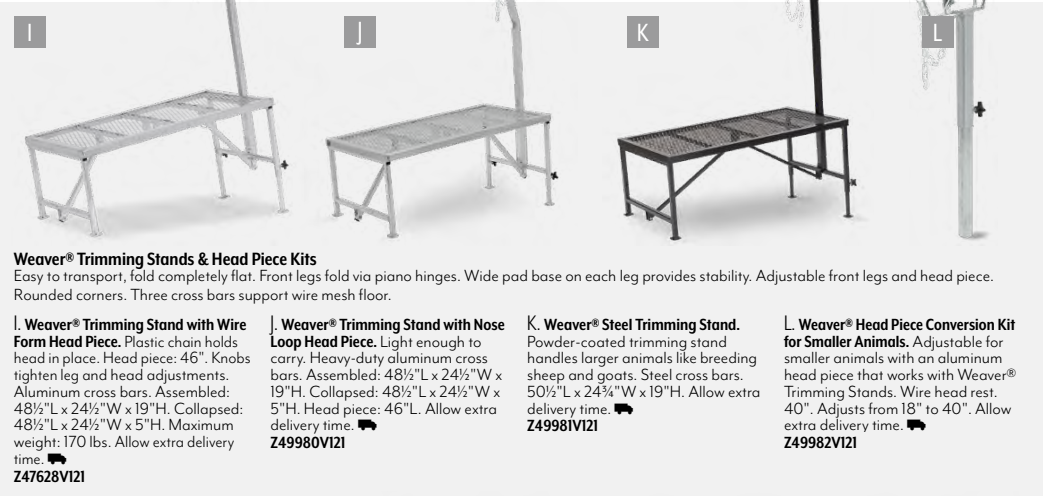
G. Shears Sharpener
Long-life abrasive wafer. Spare wafer inside sharpener. Sharpen at correct angle. 2½"W x 2¾"L.
C20052V121



H. Weaver® Self-Cleaning Slicker Brush
Great for fitting cattle flanks, legs, and tail heads to build volume and smooth out any lines. Works great for lifting leg wool on lambs to add dimension and appearance of bigger leg bone. Hair or leg wool quickly removed with a push of a button. Stainless steel teeth, nonslip grip, 4"W.
C31670V121

G. Shears Sharpener
Long-life abrasive wafer. Spare wafer inside sharpener. Sharpen at correct angle. 2½"W x 2¾"L.
C20052V121

H. Weaver® Self-Cleaning Slicker Brush
Great for fitting cattle flanks, legs, and tail heads to build volume and smooth out any lines. Works great for lifting leg wool on lambs to add dimension and appearance of bigger leg bone. Hair or leg wool quickly removed with a push of a button. Stainless steel teeth, nonslip grip, 4"W.
C31670V121



I. Weaver® Trimming Stand with Wire Form Head Piece. Plastic chain holds head in place. Head piece: 46". Knobs tighten leg and head adjustments. Aluminum cross bars. Assembled: 48½"L x 24½"W x 19"H. Collapsed: 48½"L x 24½"W x 5"H. Maximum weight: 170 lbs. Allow extra delivery time. 🐾
Z47628V121

J. Weaver® Trimming Stand with Nose Loop Head Piece. Light enough to carry. Heavy-duty aluminum cross bars. Assembled: 48½"L x 24½"W x 19"H. Collapsed: 48½"L x 24½"W x 5"H. Head piece: 46"L. Allow extra delivery time. 🐾
Z49980V121

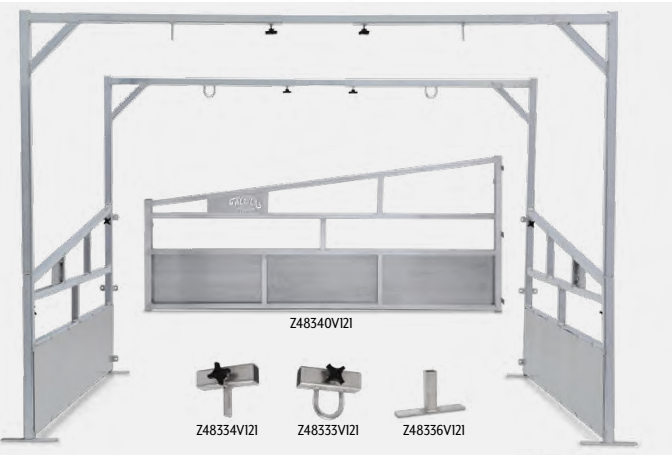
K. Weaver® Steel Trimming Stand. Powder-coated trimming stand handles larger animals like breeding sheep and goats. Steel cross bars. 50½"L x 24¾"W x 19"H. Allow extra delivery time. 🐾
Z49981V121

L. Weaver® Head Piece Conversion Kit for Smaller Animals. Adjustable for smaller animals with an aluminum head piece that works with Weaver® Trimming Stands. Wire head rest. 40". Adjusts from 18" to 40". Allow extra delivery time. 🐾
Z49982V121

Weaver® Aluminum Livestock Fan Cage
Configurable to accommodate 1-4 animals, this fan cage allows you to tie the animal. Easy to haul and build for years of use. Durable, powder-coated, angled side panels allow you can build up the bedding. Features 2 stall dividers, 2 front L-bars, 2 rear L-bars, 4 front head ties, 4 rear fan hangers, 2 extension tubes, and 12 knobs. Extend from 8' to 14' wide. Front height: 73½". Rear height: 78½". Stall divider length: 96". Allow extra delivery time. 🐾
Z48332V121

Aluminum Replacement Parts. For Livestock Fan Cage above. Allow extra delivery time. 🐾
Z48338V121 Front L-bar
Z48337V121 Rear L-bar
Z48333V121 Front head tie bracket
Z48334V121 Rear fan bracket
Z48335V121 Extension tube
Z48336V121 Foot

Stall Dividers. For Livestock Fan Cage above. Allow extra delivery time. 🐾
Z48340V121 Stall divider, right
Z48339V121 Stall divider, left



Z48340V121
Z48334V121
Z48333V121
Z48336V121

M. Aluminum Stand with Stanchion & Trough. Deck: 48"L x 20"W x 17½"H. Head piece can be extended out 8" from the deck. Stanchion height: 16" to 37". Allow extra delivery time. 🐾
Z45660V121

N. Steel Goat Stand with Stanchion & Trough. Deck: 48"L x 20"W x 17½"H. Neck reach adjusts 0" to 8".
Z15594V121



Weaver® Single Gate Pig Pen Divider
Lightweight design, portable. Powder coated with a silver vein finish that prevents aluminum from rubbing off on the animal and leaving a black mark. Measures 33" x 7½" when fully expanded and 33" x 48" when collapsed. Allow extra delivery time. 🐾
Z49973V121



Sullivan Cadillac Chutes
Square tubing strength with rounded corners. Portable. Side bars and head gate are powder-coated. 9-ga. aluminum chutes include wheels, head tie, and 2" tubing. Padded floors sold separately below. Allow extra delivery time.

7" Hybrid Chute (Aluminum Top with Steel Base). Everything above steel base is aluminum. 7"L x 34"W x 6"H. **Z46293V121**

7" Aluminum Chute. 7"L x 34"W x 6"H. **Z46294V121**

7 1/2" Aluminum Chute. Includes paper towel dispenser. 7' 6"L x 36"W x 7' 6"H. **Z49375V121**

8" Aluminum Chute. 8'L x 34"W x 7'H. **Z49989V121**

Padded Chute Floors. For use with chutes above. Wood floor and extra-thick, high-density foam padding, all covered in a durable multipurpose carpet. **Z49376V121** For 7" chutes (Z46293V121 and Z46294V121) **Z49377V121** For 7 1/2" chute (Z49375V121) **Z49990V121** For 8" chute (Z49989V121)



Weaver® Kirk Stierwalt Professional Cattle Chutes
All-aluminum, fully collapsible, powder coated with bars and head piece fitting securely in base for easy storage. Spring-loaded side bars for easy removal/adjustment (including horizontally or angled). Triangle head piece offers options for clipping at different angles. Radius corners eliminate the sharp, pointy edges. One-piece, 1/4" thick corner support at base of legs for extra stability and reinforcement. Recommended to be used with animals that have been broke. Animal should never be left unattended in chute. Allow extra delivery time.

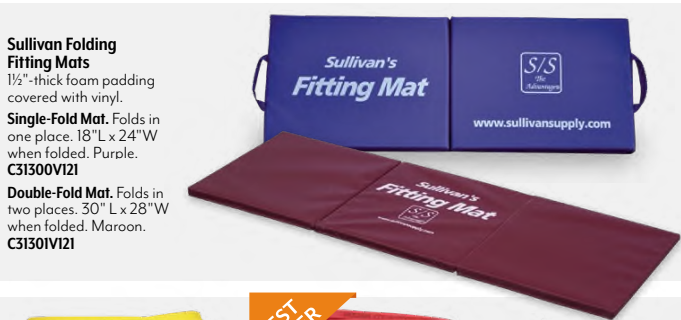
7 1/2" Chute. Assembled chute: 122 1/2"L x 36"W x 75"H. Collapsed chute: 104"L x 36"W x 16"H. **Z47629V121**

8" Chute. Assembled chute: 138"L x 36 1/2"W x 75"H. Collapsed chute: 110"L x 36 1/2"W x 16 1/2"H. **Z50204V121**

Padded Chute Floors. 1 1/2" thick, closed-cell foam padding provides extra comfort and covers the entire length of the floor. Durable outdoor carpet prevents liquids from getting inside. Easy to clean with a pressure washer. **Z48225V121** For 7 1/2" chute (Z47629V121) **Z50203V121** For 8" chute (Z50204V121)



Nasco Stall Caddy
A must-have at livestock shows and exhibitions to keep paper towels handy near your animal when you need them. The stall caddy also provides a convenient resting place for grooming aerosol cans, spray bottles, show supplies, or beverages. 18"L x 11 1/2"W x 47"H. **C35048V121**



Sullivan Folding Fitting Mats
1 1/2" thick foam padding covered with vinyl.

Single-Fold Mat. Folds in one place. 18"L x 24"W when folded. Purple. **C31300V121**

Double-Fold Mat. Folds in two places. 30" L x 28" W when folded. Maroon. **C31301V121**

ColorStorm™ Premium Rubber Hose
EPDM rubber hoses won't crack, check, or separate. Sure-Grip™ technology resists kinking and coils easily, even in weather down to -25° F. Hot water resistant up to 160° F. Durable, abrasion-resistant cover is acid resistant. Nickel-plated brass fittings are crushproof, allowing them to be run over without crushing. 340 psi pull strength ensures fittings will not pull off the hose. Lifetime warranty.

C34973V121 Red, 3/4" x 25'
C34913V121 Red, 3/4" x 50'
C34972V121 Yellow, 3/4" x 25'
C33872V121 Yellow, 3/4" x 50'

C33871V121 Yellow, 3/4" x 75'
C33870V121 Yellow, 3/4" x 50'
C33869V121 Yellow, 3/4" x 75'

Gilmour Water Nozzle
Molded two-piece grip lets you spray boiling hot or icy cold liquids without extra hand protection. Chrome-plated finish. Threaded front with rubber guard. **C09348V121**

A. Optima Livestock Scale
Livestock scale with cage for weighing hogs, sheep, small cattle or ponies. Constructed of heavy-duty materials and comes with the necessary parts for weighing livestock. Equipped with 2 wheels for easy mobility as well as pull out handles that extend out or slide back out of the way. Features 4 sturdy rubber feet to provide traction and stability. Includes watertight stainless steel backlit LCD display, accumulation mode to total weights, built-in communication port, tilt adjustable wall or desk mount, and rechargeable battery with AC adapter. 5"H platform. Capacity: 2,000 lbs. x .5 lb. Platform size is 30"L x 60"W. Cage is 37"H. Allow extra delivery time. **Z50128V121**

B. Digi-Star Wrangler Elite Livestock Weighing System with Platform
Weights accurately on uneven, firm surfaces. Advanced signal filtering provides stable reading with active animals. 1" LCD, 14-segment display provides excellent visibility. Compact, reliable SW300 indicator for more than 50 hours of use. "Lock-n-hold" feature holds animal's weight after it leaves. Automatic "zero tracking" helps eliminate the effects of dirt and manure build-up. Changes between lbs. or kg. Front-panel programmability for set up and calibration. Two weigh beams (24") with 15' stainless steel shrouded cables connect directly to indicator. 3,300-lb. capacity. Stainless steel load cell mounts. Two weigh beam system bolts onto nonskid aluminum platform. System includes SW300 indicator and mount, 24" load cells with 15' cables, 90"L x 24"W platform (hardware included), and a 120V AC/DC power supply. 3-year warranty. Available in 240V through special order. Allow extra delivery time. **Z30422V121**

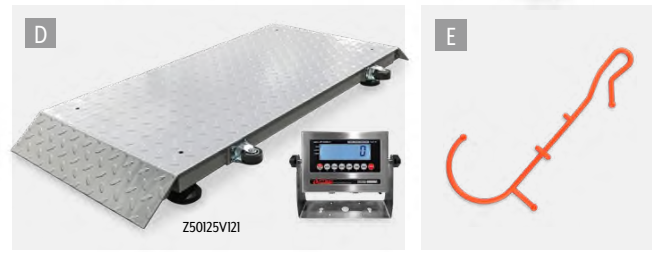
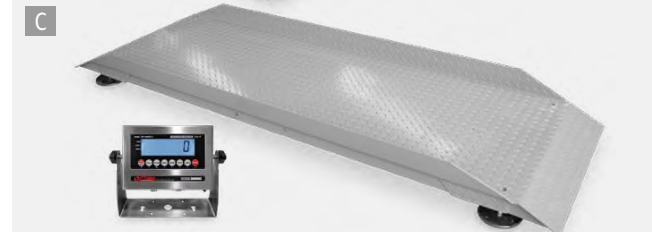
Wrangler Standard Weighing System without Platform.
Includes everything in the system above, except the aluminum platform. 3-year warranty. Available in 240V through special order. Allow extra delivery time. **Z30350V121**

Stockweigh Electronic Scale Package with 33 1/2" Load Cells.
Same as system without platform (Z30350V121, above), plus an easy-to-use indicator with 3 operation keys, plus an on/off key. "Aero" key clears indicator. Scrolling help messages. Indicator housing is made of seamless, high-impact, weatherproof Lexan. 3-year warranty. Available in 240V through special order. Allow extra delivery time. **Z15211V121**

C. Optima Livestock Alleyway Scale
84" x 30" platform with 6"L ramps and 4"H side rails. Motion-sensing technology delivers accurate weight. Stainless steel LCD display with rechargeable battery. Capacity: 5,000 lbs. x 1 lb. Includes 2-year warranty on platform; 1-year warranty on electronics. Allow extra delivery time. **Z50127V121**

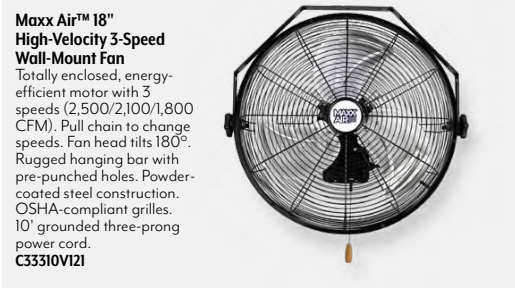
D. Optima Portable Livestock Scale
Indicator with large LCD display, metal-shielded cable (18'L), handles and wheels, and AC or battery operation. Platform is 20" x 50" x 2 1/2". Allow extra delivery time. **Z50125V121** 1,000 lb. x 0.2 lb. **Z50126V121** 2,000 lb. x 0.5 lb.

E. Hook Doctor
The first and only product of its kind — a dual purpose tool for the cattleman. Large hook assists in safely and humanely controlling an animal's head by hooking the cheek. Small hook is ideal for catching calves by the leg. Use for routine procedures like tagging, mousing, administering boluses, and catching or sorting. **C35340V121**





24" VES High-Velocity Single-Speed Circulation Fan
Tapered intake and exhaust designed for optimum performance, maximum air velocity and distance coverage. Standard OSHA safety guards mean you can mount these fans at any height. Versatile wall and ceiling mount pivots 180°; fan can turn 360°. High efficiency motors are totally enclosed with sealed ball bearing. Well balanced, strong blade design for years of trouble-free service. Easy to clean. Includes 9' L power cord. 115V, 8,800 CFM. Can be converted to variable speed if switch is purchased separately, otherwise it will run on high. Switch available through special order. Allow extra delivery time. **C35642V121**



Maxx Air™ 18" High-Velocity 3-Speed Wall-Mount Fan
Totally enclosed, energy-efficient motor with 3 speeds (2,500/2,100/1,800 CFM). Pull chain to change speeds. Fan head tilts 180°. Rugged hanging bar with pre-punched holes. Powder-coated steel construction. OSHA-compliant grilles. 10' grounded three-prong power cord. **C33310V121**

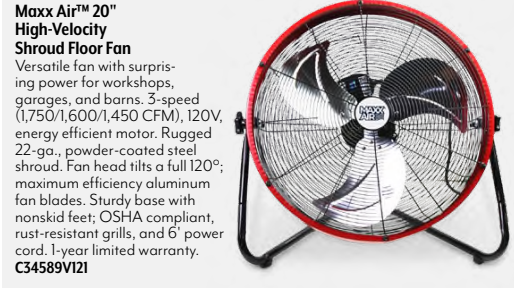


Sullivan 28" Show Barn Fan™
Quiet-running, 28" fan disperses airflow in a wide air pattern. Deep cage design allows for less friction between fan blade and fan case, resulting in a quieter fan. Heavy-duty, ½ hp, ball-bearing motor draws only 4 amps. Front-hinged, black cage opens to provide easy access to clean blades. Includes motor, cord, blade, and guard. Fully assembled. Allow extra delivery time. **Z19838V121**

Sullivan Turbo™ Livestock Fans
Fans are equipped with heavy-duty motors. Powerful and problem free. Blade design blows at a higher velocity and provides more airflow with a wider path of air movement. Complies with OSHA regulations. Durable front guard opens for easy blade cleaning. Fan Bracket Hanger sold separately below (C34943V121). Allow extra delivery time.

20". ½ hp motor. 1,725 rpm. 4,792 FPM. **C24104V121**
24". ½ hp motor. 1,740 rpm. 5,560 FPM. **C15250V121**

Fan Bracket Hanger. Easily hangs from a 2x4 or rafter. 15½" x 2" x 2". **C34943V121**



Maxx Air™ 20" High-Velocity Shroud Floor Fan
Versatile fan with surprising power for workshops, garages, and barns. 3-speed (1,750/1,600/1,450 CFM), 120V, energy efficient motor. Rugged 22-ga., powder-coated steel shroud. Fan head tilts a full 120°; maximum efficiency aluminum fan blades. Sturdy base with nonskid feet; OSHA compliant, rust-resistant grills, and 6' power cord. 1-year limited warranty. **C34589V121**



Schaefer F5™ Livestock Circulation Fan
Dependable, long-lasting motor with low-solidity ratio blade for efficiency and quiet operation without losing airflow and speed. Heavy-duty steel guards with reinforced ribs and outer rings. Powder-coated black finish over guards. Corrosion resistant inside and out for durability and long life. Flexible 7' cord with water-resistant and weatherproof on/off switch for convenient operation. Hang mount included for easy setup and take-down. 115/230V. 24" dia. ½ hp. 1,725 rpm, 7,700 cfm. Allow extra delivery time. **C33424V121**



Maxx Air™ PRO 30" Direct-Drive 2-Speed Barrel Fan
Heavy-duty, 2-speed, thermally protected ½ hp motor. 6,000 and 4,100 CFM speeds. Rugged 22-gauge, enamel-coated steel housing, with handles. Nonskid positioning legs. 8' power cord. Safe OSHA-compliant grilles. Allow extra delivery time. **C33314V121**

Maxx Air™ PRO 42" Belt-Drive. Similar to fan above, with a larger ½ hp motor (14,500 and 10,500 CFM), belt drive for ultra-quiet operation, and dual ball bearing with reinforced steel motor mounts. 8' L power cord. Allow extra delivery time. **Z48256V121**



Upright Fan Stand
Height is adjustable. 1½" tubing. No heavy base required. Mounting brackets included to nail to front of stall. Holds one or two 24" fans, or one 30" fan (not included). **C15772V121**



Sullivan Fan Stand Cart
Moves easily and has an adjustable height from 3' 5" to 4'. Stand holds one fan (not included). **C31903V121** –



Sullivan Fan Stand Truck
Convenient fan stand truck can be mounted with one or two fans. Adjustable bars so fans can be moved to any height. Holds 24" fans (not included). 1-year warranty against manufacturer defects. Allow extra delivery time. **C32259V121**



Feed Bin with Stand
Top-fill and bottom-dispense rotates feed. Translucent case constantly shows feed level. Powder-coated steel stand keeps unit elevated. 270-lb. capacity. Roto-molded, weather-resistant, high-impact plastic. Aluminum slide mechanism for one-step dispensing. 18"W x 30"D x 49"H. 5-year warranty. Allow extra delivery time. **C30137V121**



Basic Goat & Sheep Bunk Feeder
Lightweight, hot-dipped galvanized steel for extended life. Accommodates 10 mature goats and/or sheep at feeding time. Long-lasting polyethylene trough with one-piece construction for easy cleaning. 43"L x 31"W x 45½"H. Allow extra delivery time. **C31950V121**



Bunk Feeders
Durable, impact resistant, UV protected, 100% poly will never rust. Legs easily attach with 2 bolts per leg. Steep walls keep feed inside. 43-gallon capacity; 1¼" drain plug for easy cleaning or use as a water tank. Bunk depth of 14". 3-year limited warranty. 48"L x 23"W x 17½"H. Allow extra delivery time. **C35187V121**



Plastic Buckets
Additional ribs under the rim significantly improve strength. Grooved finger grip on bottom for easy pouring. Stacking ribs allow buckets to separate easier when stacked. Choose flat-back or round shapes.

Color	2-Gallon, Round Back (11½" x 8¾")	2-Gallon, Flat Back (11½" x 8¾")	5-Gallon, Flat Back (14¾" x 13")
Red	C29913V121	—	C24908V121
Blue	C29909V121	C24907V121	C29888V121
Hunter Green	C29911V121	—	C29889V121
Black	C29910V121	—	C35559V121
Yellow	C28252V121	—	C28250V121
Hot Pink	C28251V121	—	C28249V121
Purple	—	C28300V121	C28301V121

5-Pint Plastic Feed Scoops
Lightweight, high-impact flexible plastic with "ribbing" for strength. 5-pint capacity.

White	C07002V121
Blue	C29661V121
Neon Green	C14372V121

11" Fence Feeders with Clips
Includes 2 heavy-duty clips for hanging on wire fencing. High-impact polyethylene. Capacity: 4½ qts. liquid or 4 qts. dry. 11"L x 6¾"W x 6"H. **C34315V121**

Hanging Sheep Feeders
Molded plastic withstands the elements and animal abuse. Easily hang on fences. Hang on 2½" boards. Metal brackets.

1'. 10"W x 16¾"L x 5"D.	C13126V121	4'. 10"W x 48"L x 5"D.
2'. 10"W x 27¼"L x 5"D.	C13127V121	Allow extra delivery time. C16703V121
3'. 10"W x 40½"L x 5"D.	C13128V121	

18-Qt. Hook-Over Feeder
Rubber is more crack-, crush-, and freeze-proof than plastic. Molded-in bracket hooks over any 2x4 board. Center notch for straddling an graduation marks in quarts and liters. 17"L x 16"W x 10"H. Holds 18 qts. (4½ gallons). **C34633V121**

Double Tuf Hook-n-Feed 14-Qt. Fence Feeder
Molded bracket hooks over any 2" board. For more permanent installations, set 2 screws in the holes. Top edge has rounded corners. Easy-to-pour lip and handle hold. Calibration marks. 11" x 14¾" x 12½". **C24548V121**

Auto Waterer with Metal Cover
Float-controlled model hooks up to a standard ¾" garden hose to automatically deliver fresh water in above-freezing temperatures. 4-gallon capacity. Includes a metal float cover and metal brackets for over-the-fence or on-the-wall installation (hardware not included). Impact-resistant polyethylene resin. Operates at pressure between 20-50 psi. Includes 30' of hose with a female hose attachment. 14¼"L x 17½"W x 10¾"H. **C32938V121**

Rubber Mat
Precut rubber utility mat ideal for animal environments. Nonporous surface will not harbor bacteria. Bottom side is grooved for drainage; ribbed top side for traction. 70% recycled rubber and 30% styrene butadiene rubber (SBR) that will not shrink, curl, or crumble. Easy to lift, move, and clean. ISO 9001 certified. 96"L x 40"W x ¼" thick. 1-year warranty. **C32321V121**

6½-Gallon All-Purpose Utility Tubs
Tough tub works great as a feeding pan or washing pan. Impact-resistant plastic. Rim has hand grips. 18" dia. x 8"H.

Blue	C33688V121
Red	C33689V121
Green	C33690V121

15-Gallon Large-Volume Rubber-Fiber Feeder
Equivalent to 1½ bushels. Safe and crushproof. Cannot rust, dent, or chip. Unharmed by salt, chemicals, or weather. No sharp edges or splinters. Top dia. 26"x 9½"H. **C07010V121**

Little Giant Automatic Stock Waterer - Galvanized
A constant water level in this unit is maintained by an improved adjustable float that is molded from high-grade nylon for a lifetime of trouble-free operation. Rigidly formed of heavy-gauge prime draw-quality steel, the fast, easy-cleaning bowl has a large, deep drinking area. Waterer can be hooked up to a hose or a pipe. Outlet on waterer is ½". Fits ½" pipes and is easily installed at any height with U-bolts or lag bolts. Can be connected left or right. Unit is 4½" H; bowl width is 8". Front to back dia. 8"; front to back of bowl is 7¼" Nonsiphoning. Couplers, U-bolts or lag bolts sold separately. **C05609V121**

Complete Float Assembly Replacement.
Includes float, valve, arm, pin, washer, gasket, and lock nut. **C13291V121**



DuraForks
Super-tough polycarbonate plastic fork head is flexible and outlasts ordinary plastics. Angled tines for easy manure pickup with less spilling. 52" L handle. 15" W at top, 13½" at bottom, and tines are 9" L.

A. Anodized Aluminum Handle. Allow extra delivery time. **C24547V121**

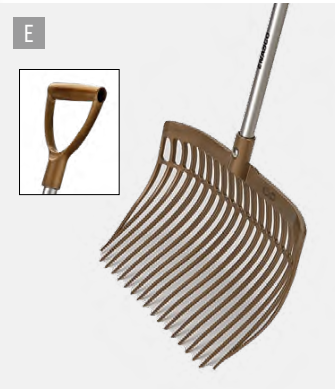
B. Hardwood Handle. Allow extra delivery time. **C19435V121**
Replacement Head
C29891V121

C. Heavy-Duty #10 Aluminum Scoop
Poly D-grip. 30" L wood handle. Blade size: 13½" x 18" x ½". Allow extra delivery time. **C26358V121**

Muck Stall Cleaning Package
Everything needed to clean muck stalls. This 70-qt. tub fits securely on the cart. Drop-down retaining ring on cart makes it easy to load and unload tub even when heavy. Large pneumatic tires allow cart to maneuver over almost any terrain. 350-lb. weight capacity. Folds for storage. Features a retractable kickstand and adjustable handle height. Package includes Muck Cart (C28248V121) below, cart dimensions 31½" L x 28½" W x 35½" H, 70-qt. muck bucket (C12623V121, below), and 52" DuraFork for easy manure pickup (C19435V121, above). Allow extra delivery time. **C28298V121**

Muck Cart Only. Allow extra delivery time. **C28248V121**

70-Qt. Muck Bucket. Made of a heavy-duty polymer alloy. Resists the effects of chemicals, weather, strong detergents, fertilizers, and acids. Low, wide shape for easy cleanup. Molded one-piece construction with ½" polypropylene handles reinforced with heavy-duty brass grommets. 21¼" top dia. x 16½" H. Allow extra delivery time. **C12623V121**



D. Yo-Ho #12 Poly Scoop/Shovel
Rugged shovel with 30" L wood handle. Poly D-grip. Blade size: 15" x 19". Allow extra delivery time. **C20000V121**

E. Forever Fork
The only manure fork you'll need. The highest quality plastic in the world, this fork is lighter and easier to manage. 55½" L. Allow extra delivery time. **C34381V121**



Farm Tough™ Cart
Smooth, seamless one-piece construction. Reinforced ribs add impact resistance. Large, 20" x 2½" pneumatic wheels roll over most surfaces. 200-lb. load capacity. 3½ cu. ft. level capacity and 6¼ cu. ft. heaped capacity. 27½" L x 24¾" W x 47" H. Allow extra delivery time. **C15942V121**



Weaver® Deluxe Dolly Show Box
Sliding rack. Two spacious foam lined drawers on slides. Easy access to your blower with pull out drawer. Mounted on a wheeled frame with a dolly handle. Door features 8 hooks. Five sets of brackets on both the back of box and inside of door offer storage for show sticks. Sturdy hasp latch keeps items secure (padlock not included). 24"D x 30"W x 61½"H; depth including handle is 31". Allow extra delivery time. **Z51268V121**



Weaver® French Door Show Box
Aluminum shelves for liquids and aerosols, 3 hooks for halters and ropes, and storage pipes, whips and blowers. Easily mobile with 10" no-flat tires. 4' 31½" L x 36½" W x 49½" H. Allow extra delivery time. **Z49978V121**



Z48508V121



Z49082V121

Weaver® Dolly Show Boxes

Mounted on a wheeled frame with a dolly handle. Hooks for hanging halters, ropes, and more. Large bottom shelves can fit a blower, gallon-size products, and clippers. Hasp latches keep doors closed and contents secure (padlocks not included). Feature 10" no-flat, polyurethane foam-filled tires with rugged treads for easier rolling. Allow extra delivery time. **Z48508V121**

4" Box

Z48507V121 Single-door, anodized. 24"W x 46½" H x 24"D

Z49083V121 Two-door, aluminum. 24"W x 48"H x 26½"D

5" Box

Z48508V121 Single-door, anodized. 24"W x 58½" H x 24"D

Z49082V121 Two-door, aluminum. 24"W x 60"H x 26½"D

BEST
SELLER



"Doc" Brannen's Clear and Black Magic
Not a paint or lacquer. Great for tails, hooves, legs, and white spots; preparing top lines. Just spray on, then comb in for about 3-4 minutes. Won't rub off; leaves hair soft and pliable. 10-oz. can.
C12244V121 Clear
C09918V121 Black

BEST
SELLER



ONLY AT
NASCO

Nasco Mighty Mac Cover Spray
Natural, ideal look for topline hair and other parts on red- and brown-haired livestock. Spray just before entering ring. Remove with shampoo and adhesive remover. 10-oz. can.
C32050V121



ShowSheen® Hair Polish
Detangler dries to a bright, natural sheen. Enriched with pro-vitamins. Silk proteins strengthen mane and tail. Repels dust and dirt. Jasmine and sandalwood scent.
C10895V121 Quart Bottle
C12912V121 Gallon Refill



Sullivan Revive™ Skin & Hair Conditioner
Restores natural oil and nutrients to skin and hair and brings life and vigor to dull, dry hair. Vitamin enriched. Wash out to prevent flaking. 17-oz. can.
C19005V121
Sullivan Revive LITE™ Skin 7 Hair Conditioner.
Doesn't weigh hair down; extra-light cosmetic-grade oils do not glob or allow hair to stick together. Adds lift to hair with more separation. Lightly coats and easily penetrates the hair and absorbs into the skin without clogging pores. 17-oz. can.
C33280V121



Sullivan Swat Fly Spray
Water-based aerosol kills and repels common pests such as flies, mosquitoes, gnats, and other flying insects. Very effective, gentle formula is safe to spray directly onto a groomed animal. Will not break down adhesives. 15-oz. can.
Can only be shipped Ground.
C32406V121



Sullivan Bright Lights™ Whitening Shampoo
Brightens white hair, intensifies colors of all coats, and shampoos away yellow-tinted, sun-faded, and stained hair. Vitamins for added nourishment to skin and hair. Use on all animals.
C18992V121 Quart
C32497V121 Gallon



Orvus® Paste Soap
A neutral, synthetic detergent with outstanding wetting, penetrating, sudsing, and emulsifying properties. Readily soluble in hot or cold water. Rinses away freely. 7½-lb. jar.
C01056V121



E-Z Spray Bottles
Low-cost polypropylene sprayer with adjustable spray pattern.
C05706V121 Quart
C07664V121 Pint —
Replacement Sprayer Heads Only
C05707V121 For C05706V121, above



ONLY AT
NASCO

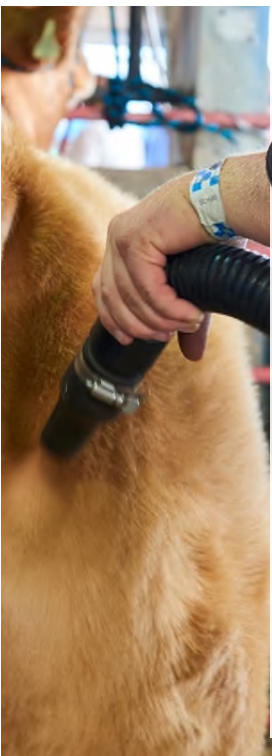
Compression Sprayer
For insecticides, cleaners, misting plants, animal grooming, and dairy uses. Easy-to-use compression mechanism. Durable plastic 4-pint (2-liter) sprayer.
C19562V121



Sullivan Totally Tuned Double Blower Cart
All-metal "Y" system eliminates the need for short blower hoses. Generates more sealed air pressure for more power. Rugged steel. Includes convenient comb holder on the back. (Blowers and hoses sold separately.) Allow extra delivery time. 🚚
C34013V121



Sullivan Air Express Mini Blow Dryer
Equipped with a single, high-powered, high-efficiency motor. Only draws 11 amps of electricity. Includes a patented aerodynamic funnel front end cap design for more air velocity and the patented cartridge filter system. Includes supplemental heat booster to increase air temperature for faster drying. Ideal for small animal or pet exhibitor. Includes a 15' hose.
C32991V121





Circuiteer® II Blower/Dryer
Choice of one motor for sensitive areas or two motors for more blowing power. Prevents water spots. Features 120V utility outlet. No heat element; blower only. Includes a 15' hose with blower tip and filter. 20' cord. 120V/17 amps. 4 hp. CSA- and CE-approved units available upon request. Available in 240V through special order. 2-year warranty.

	Metallic Blue	C12017V121		Black	C33137V121
	Purple	C24807V121		Pink	C33138V121
	Green	C24808V121		Lime Green	C33139V121



Circuiteer® IV Blower/Dryer. Same features as the Circuiteer® II above, but also has 2 outlets. Hammertone finish. Available in 240V through special order.

	Gold	C33140V121		Silver	C33141V121
---	------	-------------------	---	--------	-------------------


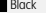


Mini-Circ Blower/Dryer
Rugged, 18-ga. steel. Two-stage, 9.5-amp motor turbine. 4 hp. Includes blower tip, filter, and 10' hose. CSA- and CE-approved units available upon request. Available in 240V through special order. 2-year warranty on motor only.

	Metallic Blue	C12278V121
	Purple	C24805V121
	Green	C24806V121
	Black	C33133V121
	Pink	C33134V121
	Lime Green	C33135V121



Circuiteer® I
Use one or two motors to vary pressure. Two high-speed motor turbines (each 4 hp). 18-gauge stainless steel. Has 120V utility outlet. No heat element; blower only. Includes a 10' hose with blower tip and filter. 20' cord. 120V, 14.85 amps. CSA- and CE-approved units available upon request. Available in 240V through special order. 2-year warranty.

	Metallic Blue	C03833V121
	Black	C33136V121

There's magic in those blades, right? Maybe you're an expert professional cattle fitter or maybe you're a first-time 4H goat exhibitor — the tools are the same. Find the very best quality clippers here and get started on going from good to great with confidence.



In 1928, the Andis® company developed the compact Single Unit Electric Animal Clipper, leaving the standard belt-driven and much larger animal clippers in the dust. This Wisconsin company has never looked back.



	Product No.	Title	Description	Cordless	Color	SPM (Strokes per Minute)	Includes
A.	C35058V1Z1	Pulse ZR® II	5-speed. Runs for 3 hours on one charge. Use any UltraEdge®, CeramicEdge® or Show Edge blades. Lithium-ion battery.	Yes	Black	2,500-4,500	#10 CeramicEdge® blade, charger stand, blade oil and hard-side case
	C35070V1Z1	Replacement Battery	For C35058V1Z1, above.				Replacement battery only
B.	C36387V1Z1	Pulse ZR® II	Same description as above.	Yes	Teal/Purple	2,500-4,500	#10 CeramicEdge® blade, charger stand, blade oil and hard-side case
C.	C23209V1Z1	UltraEdge™ AGC Super	2-speed. Runs so cool that fans and air vents that can become clogged with hair are not needed. Quiet operation. Shatterproof housing. Locking switch button.	No	Burgundy	3,400-4,400	#10 UltraEdge® Blade
	C32594V1Z1	UltraEdge™ AGC Super	Same description as above.	No	Spring Green	3,400-4,400	#10 UltraEdge® Blade
	C25725V1Z1	UltraEdge™ AGC Super	Same description as above.	No	Metallic Blue	3,400-4,400	#10 UltraEdge® Blade
	C19686V1Z1	UltraEdge™ AGC Super Horse	2-speed. Features 14' heavy-duty cord. Works with all Andis® UltraEdge® and CeramicEdge® blades and A5-type detachable blades (sold separately).	No	Maroon	3,400-4,400	T-84 UltraEdge® Blade, DVD, blade oil, and carry case
D.	C34655V1Z1	Excel Variable Detachable-Blade	5-speed. Comes with a 4x4 blade drive with 25% more blade torque. Anti-slip, soft-grip housing is contoured to fit your hand, 10% faster than the AGC Super 2-Speed™. Use A5-type detachable blades.	No	Fuchsia	2,500-4,500	#10 CeramicEdge® Blade
	C34656V1Z1	Excel Variable Detachable-Blade	Same description as above.	No	Burgundy	2,500-4,500	#10 CeramicEdge® Blade
	C34654V1Z1	Excel Variable Detachable-Blade	Same description as above.	No	Indigo	2,500-4,500	Super Blocking Blade
E.	C35463V1Z1	Pulse Li S	Single-speed. Lithium-ion power paired with powerful rotary motor cuts through single-coated breeds. 2 hours of run time. Blade adjusts from sizes 40 to 9 and easily snaps-off for cleaning or replacement. Wahl's 5-in-1 blades will fit this clipper.	Both	Turquoise	5,500	Charging adapter, 6 attachment combs (¼", ⅜", ½", ⅝", ¾", 1", 1 ¼", 1 ½", 1 ¾", 2", 2 ¼", 2 ½", 2 ¾", 3", 3 ½", 4", 4 ½", 5", 5 ½", 6", 6 ½", 7", 7 ½", 8", 8 ½", 9", 9 ½", 10", 11", 12", 13", 14", 15", 16", 17", 18", 19", 20", 21", 22", 23", 24", 25", 26", 27", 28", 29", 30", 31", 32", 33", 34", 35", 36", 37", 38", 39", 40", 41", 42", 43", 44", 45", 46", 47", 48", 49", 50", 51", 52", 53", 54", 55", 56", 57", 58", 59", 60", 61", 62", 63", 64", 65", 66", 67", 68", 69", 70", 71", 72", 73", 74", 75", 76", 77", 78", 79", 80", 81", 82", 83", 84", 85", 86", 87", 88", 89", 90", 91", 92", 93", 94", 95", 96", 97", 98", 99", 100") blade guard, blade oil, and stand
F.	C34495V1Z1	EasyClip® Li	Single-speed. 2+ hours run time and charges in 90 minutes. Lithium-ion power with rotary motor cuts through single-coated breeds. Blade adjusts from sizes 30 to 9.	Both	Silver	5,500	Clipper, charging adapter, 6 attachment combs (¼", ⅜", ½", ⅝", ¾", 1", 1 ¼", 1 ½", 1 ¾", 2", 2 ¼", 2 ½", 2 ¾", 3", 3 ½", 4", 4 ½", 5", 5 ½", 6", 6 ½", 7", 7 ½", 8", 8 ½", 9", 9 ½", 10", 11", 12", 13", 14", 15", 16", 17", 18", 19", 20", 21", 22", 23", 24", 25", 26", 27", 28", 29", 30", 31", 32", 33", 34", 35", 36", 37", 38", 39", 40", 41", 42", 43", 44", 45", 46", 47", 48", 49", 50", 51", 52", 53", 54", 55", 56", 57", 58", 59", 60", 61", 62", 63", 64", 65", 66", 67", 68", 69", 70", 71", 72", 73", 74", 75", 76", 77", 78", 79", 80", 81", 82", 83", 84", 85", 86", 87", 88", 89", 90", 91", 92", 93", 94", 95", 96", 97", 98", 99", 100") blade guard, blade oil, and a storage case



Andis® CeramicEdge® Blades
Zirconium oxide ceramic offers superior durability and break resistance. Patented blades stay up to 75% cooler than steel cutters.

Product No.	Size/Type	Description	Cutting Height
C26252V1Z1	#10	General clipping on underbody, face, and head.	⅛"
C26254V1Z1	#30	Very close clipping on udder and tail head.	⅛"
C26382V1Z1	#40	Clipping on udder, surgical clipping, shaving, and toplines.	⅛"
C33148V1Z1	#40	Stainless Steel. Clipping on udder, surgical clipping, shaving, and toplines.	⅛"
C29817V1Z1	#5/FC Trimmer	For general clipping. Full-tooth design, smooth finish.	⅛"
C30766V1Z1	AG/BG Medium Cutter	For cattle and horses.	¾"

Andis® UltraEdge® Blades Detachable Blades (A5 Type)
Exclusive process adds carbon to cutting edge to keep blades sharper longer. Special chrome finish resists rust and keeps blades at optimum performance.

Product No.	Size/Type	Description	Cutting Height
C13814V1Z1	#10	General clipping on underbody, face, and head.	⅛"
C13815V1Z1	#15	Semi-close clipping on cattle, horses, dogs, and cats.	⅜"
C25091V1Z1	#30	Clipping on udder, surgical clipping, shaving, and toplines.	⅛"
C13817V1Z1	#40	Clipping on udder, surgical clipping, shaving, and toplines.	⅛"
C25091V1Z1	#50	Cuts very close for surgical/veterinary use.	⅛"
C25981V1Z1	Super Blocking	For beef cattle legs and body.	⅛"
C29301V1Z1	Size T-10	For body clipping.	⅛"
C30404V1Z1	Medium Blending	For easy blending and fading. Smooth finish.	⅛"
C14196V1Z1	T-84 (X-Wide)	For body clipping.	⅛"



Andis® Large Universal Comb Sets
Ideal for safe, accurate clipper cutting. Multiple sizes offer you plenty of choices while grooming. Attachments snap on and off easily. For use with Andis® detachable A5 clippers and most other brands. Work best with blade sizes 40, 35, 30, and 10.
8-Piece Set. Includes ⅜", ⅝", ¾", 1", 1 ¼", 1 ½", 1 ¾", and 2".
C27233V1Z1
9-Piece Set. Includes ⅜", ⅝", ¾", 1", 1 ¼", 1 ½", 1 ¾", 2", and 2 ¼".
C29814V1Z1



Product No.	Size/Type	Description	Cutting Height
C33863V1Z1	¾" HT	Eliminates use of comb attachments.	¾"
C25090V1Z1	⅝" HT	Eliminates use of comb attachments.	⅝"
C31001V1Z1	3¼ FC	For cattle, horses, and hogs.	⅝"
C29381V1Z1	#4	For general clipping of cattle, horses, and hogs.	⅝"
C23461V1Z1	#4F/FC	For clipping hogs for show, cattle, horses, and dogs.	⅝"
C25095V1Z1	#5F/FC	For general clipping. Full-tooth design, smooth finish.	⅝"
C25093V1Z1	#7F/FC	For general clipping. Full-tooth design, smooth finish.	⅝"



John Oster not only developed and patented the first detachable, interchangeable clipper blades, but he also bred one of the foremost herds of Brown Swiss cattle in the country. Bet his bovine beauties were extra pretty.



Product No.	Title	Description	Cordless	Color	SPM (Strokes per Minute)	Includes
A. C31331V121	Volt	Single-Speed. Detachable Li-Ion battery runs up to 90 minutes on a charge, while recharging in 60 minutes. Consistent power versus Nicad batteries. Lightweight, ergonomic design. 8" L x 1 1/4" W x 1 1/2" D. Clear coat protects from dirt, smudges, and fingerprints. Uses A5-type detachable blades. UL listed/CSA approved.	Yes	White	2,400	#10 blade, cleaning brush, and oil
B. C24828V121	Golden A5®	Single-Speed. Wider sweep for faster cutting. Powerful, cool running Universal Motor. Cryotech™ blades stay sharper longer. Virtually unbreakable housing. Uses A5-type detachable blades.	No	Electro Silver	2,100	#10 blade
C24829V121	Golden A5®	2-Speed. Same description as above.	No	Graphite Gray	2,700	#10 blade
C24830V121	Turbo A5®	Single-Speed. Same description as above.	No	Midnight Blue	3,100	#10 blade
C24831V121	Turbo A5®	2-Speed. Same description as above.	No	Ice Blue	4,000	#10 blade
C. C17994V121	PowerPro™ Ultra	Single-Speed. Maximize cutting performance, while minimizing blade heat. Battery run time 60 minutes. Uses A5-type detachable blades.	Yes	Blue	3,300	#10 blade, 2 batteries, charging stand, and carrying case
C17995V121	Replacement Battery for C17994V121, above.					Replacement battery only

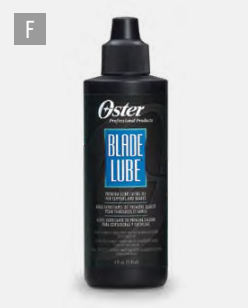
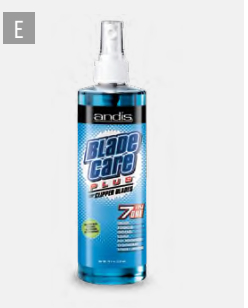


Oster® Cryogen-X™ (A5 Type) Blades
Innovative heat-reducing technology and legendary cutting performance provide the coolest and sharpest blade possible.

Product No.	Size	Description	Cutting Height
C27076V121	Size 10 (X-Wide)	Cuts to medium length. Good for general trimming.	3/32"
Oster® Cryogen-X™ Detachable Blades			
C27070V121	#10	General clipping on underbody, face, and head.	1/16"
C27071V121	#15	Semi-close clipping on cattle, horses, dogs, and cats.	3/64"
C27072V121	#30	Very close clipping on udder and tail head.	1/32"
C27073V121	#40	Clipping on udder, surgical clipping, shaving, and toplines.	1/64"
C27105V121	#50	Cuts very close for surgical/veterinary use.	1/32"
Oster® Cryogen-X™ Thick Type Detachable Blades			
C07063V121	#5	For general clipping.	1/8"
C14877V121	#5F/FC	For general clipping. Full-tooth design, smooth finish.	1/8"
C14879V121	#7	For general clipping.	1/8"



Sullivan LAZER Blade Sharpener™
Square base constructed of cast aluminum to provide the utmost stability. Equipped with a 1/4 horse-power motor that turns the wheel at 1,725 rpm. C30047V121



A. Groomer's Choice™ Clipper Blade Sharpener
Hand-operated to quickly touch up blades. Sharpening plate surface is machined to 0.0005 of an inch for perfect grinding. Includes sharpening compound, simple instructions, and a soft case. C27159V121

B. Sullivan Replacement Grit
Use fine grit for finishing, and coarse grit for aggressive sharpening. 1-lb. bottle. C35358V121 Fine Grit C35359V121 Coarse Grit

C. Andis® Clipper Oil
Proper weight and grade of oil keeps clippers in top operating form. Use on blades before, during, and after each use. Colorless and odorless. 4 fl. oz. C29323V121

D. Andis® Cool Care Plus™
Five-in-one coolant, disinfectant, lubricant, cleaner, and rust preventative. Leaves a light, lubricating film that reduces friction, smooths clipping, and prolongs blade life. 15 1/2-oz. can. C24665V121

E. Andis® Blade Care Plus™
Washes away hair, buildup, and preservatives. Vitamin-enriched seven-in-one formula works as a coolant, deodorizer, lubricant, cleaner, rust preventative, and decontaminant. 16-oz. pump bottle. C29188V121

F. Oster® Blade Lube
Premium lubricating oil for clippers and blades. 4 fl. oz. C18040V121

G. Oster® Spray Disinfectant
Specially formulated to kill most germs, this disinfectant helps to prevent mold and mildew. Clean fragrance helps eliminate odors. 14-oz. can. C15375V121

H. Oster® Kool Lube®
Cool, lubricate, and clean blades. Formulated to reduce heat, friction, and even blade wear without leaving a heavy residue of oil. 14-oz. aerosol can. C06826V121

I. Oster® Blade Wash
Excellent cleaner for use at the end of the cutting. Flushes out hair accumulated between upper- and lower-cutting blades. Lengthens blade life. 18-oz. can. C10826V121



Lister® Star Clipper
Maintains constant speed, even in areas where the coat is thick or dirty. Slim, balanced grip for comfort. Lightweight. 2,800 spm. Patented ventilated head prevents blades and head from getting hot and also helps keep hair away. Overload switch protects the motor from damage in the event of a jam. Removable, replaceable air filters. Includes fine blade and case. Compatible with blade sets listed below. 110V. 1-year warranty.

- Green

Purple

Turquoise

Red
- C26770V121

C31659V121

C31665V121

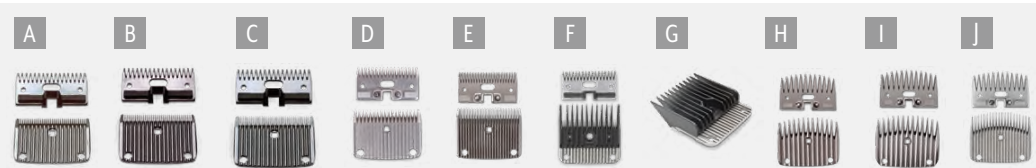
C33966V121



Premier 4000c
For slick-shearing club lambs and “plowing” off cattle hair. Motor produces less heat and is smaller in size, lighter in weight, and shorter in length than any other clipper. Fan forces air forward through the heads, enabling heads to run 20° F cooler. Rarely slows down under load. Will drive shear head. Quieter sound is less likely to upset animals. 2,850 strokes at 120V. Includes fine blade and case. 3-year warranty.
C24731V121



Lister® Fusion® Clipper
Clips on the first pass and doesn’t bog down. Rotary motor with 2 speeds (2,500 and 2,900 spm). Lightweight (2 lbs.). Ensures cool running during heavy duty applications. Simple blade and tensioning changes make maintaining the blade easy. Easy to clean and oil. Automatic overload protection. Reset function. 16’ cord. Includes Lister® fine 35 tooth clipper blade, cleaning brush, R15 oil, screwdriver, and instruction book. 2” D x 2½” W x 12½” H.
C36522V121



Lister Clipper Blade Sets (Blades fit Lister Legend, Liberty, Laser, and Star clippers)

Product No.	Description
A. C16654V121	Surgical Blade Set A25 – 35-tooth bottom/17-tooth top, surgical A25/AC blade set (leaves hair approx. ½” or 1 mm)
B. C15471V121	Fine Blade Set A2F – 35-tooth bottom/17-tooth top (leaves hair approx. ¼” or 1.4 mm)
C. C15472V121	Medium Blade Set A2 – 35-tooth bottom/17-tooth top (leaves hair approx. ½” or 2.5 mm)
D. C34905V121	Coarse Blade CA2/AC – 18-tooth coarse blade ideal for clipping very thick, dense areas of horse hair, as well as llamas and alpacas; strong teeth suitable for cleaning up dirty animals (leaves hair 0.1” or 2.5 mm)
E. C16642V121	“Cover Cole” Plucking Blade Set – (leaves a smooth finish of ⅜” or 5 mm of hair)
F. C29172V121	Hog Blade Set 13 mm – leaves hair approx. ½” or 13 mm
G. C34481V121	Lifter Blade 19 mm – Allows you to tidy animal up while leaving a longer coat; guard on comb lets you leave hair ¾” (19 mm) longer than a standard blade
H. C16640V121	Wizard 13T SS Blade Set – Blade (13-tooth comb) set (short, sharp blade has lower teeth that are no longer than the upper teeth; tips are prickly; designed to eliminate the need for shearing heads when blocking cattle; leaves hair approx. ½” or 4 mm)
I. C16641V121	Wizard 13T LR Blade Set – Sheep blade (13-tooth comb) set (for slick shearing, blocking and shearing, and for clipping on the skin; leaves hair approx. ¼” or 3.5 mm)
J. C23100V121	Wizard 20T LR Blade Set – Sharp-tip show set (takes precision cutting and shaping of show animals to a higher level; 20 teeth, leaves hair approx. ⅜” or 4.8 mm)

Premier XtraCover Clipping Blade Set
For clipping show pigs and goats and also for creating a smooth, high-fiber finish on cattle and sheep for production sales. Includes a 24-tooth lower blade, 22-tooth upper blade, and a metal storage box. Cutting depth of ¼”.
C30881V121

Premier Clipper Blades
Blades fit Premier 1000c, 3000c, and 4000c clippers.
C24733V121 Coarse
C24735V121 Fine
C24734V121 Medium
C24736V121 Surgical



Heiniger Xpert Sheep Clipper
High-torque motor combined with a unique connection between shearing head and fiberglass-reinforced housing ensures low-vibration shearing. Ergonomic handle and light weight for overall comfort. Swiss made. Provides 2,500 spm. 200 watts. 301 mm.
C36403V121



Oster® ShearMaster® Single-Speed Clipper/Shearing Machine
Single-speed shearing machine with a 3” head is lightweight and powerful. 13-tooth comb and 4-point cutter give high-quality shearing. Heavy-duty, 15’ insulated cord. Comes with a toolbox with removable tray and storage space. 3,000 spm at 120V. 150 watts. UL approved.
C2575V121



Premier 4000s Sheep Shear
For those with experience who wish to plow through wool and hair as fast as possible. No motor-in-the-hand shear matches the 4000s for grip, balance, and nearly unstoppable torque (power). 2,800 spm at 120V. Comes with a 13-tooth comb and a 4-point cutter with case. 3-year warranty.
C31874V121



Product No.	Description
C24742V121	Spirit 13-tooth short bevel comb for Premier 3000s and 4000s (compatible with Oster® and Andis® sheep shears)
C24744V121	Phantom R 20-tooth comb (round)
C24741V121	Spitfire 4-point cutter for Premier 3000s and 4000s (compatible with Oster® and Andis® sheep shears)

Replacement Parts

Oster® Standard Single-Speed Motor. For EW311A, EW311B, and EW311C Shearing Heads; 510A Clipping Head; and Model 510 Clipmaster®.
C04582V121

Oster® Variable-Speed Motor. For EW610 Clipmaster®.
C07206V121

Oster® Clipper Replacement Heads
Heads are compatible with ClipMaster®, ShearMaster®, and ShowMaster®.

ShearMaster®/ShowMaster® Replacement Head. Can also be used as an accessory head on ClipMaster®.

C02127V121

ClipMaster® Replacement Head. Can also be used as an accessory head on ShearMaster® or ShowMaster®.
C02123V121



Product No.	Description
C02128V121	P2311 wide diamond cutter (regular style); widely used for shearing 4-point cutter with clean-cut shape, fine angles, and finish (for ShowMaster® or ShearMaster® shearing machines)
C07207V121	34AB AAA wide cutter; perfect mesh of cutter teeth with comb for faster, cleaner cutting; enters wool easier
C02136V121	P7112 20-tooth goat comb with closer spacing of teeth to reduce scratches and cuts (recommended in screw worm-infested areas)
C28259V121	13-tooth Arizona thin comb (P1082) developed for shearing hard, gummy sheep



Oster® ClipMaster® Clippers
Soft-touch grip for better control and comfort. Quiet and cool running. Tension knob allows for easier blade adjustment. Stays oiled for up to 100 hours. Set screw cap secures grease hole. Operate on 120V AC, 150 watts. 15' heavy-duty insulated cord. Use on cattle, horses, and goats (except Angora). Deluxe storage case with compartments.

A. Model 510 Single-Speed Clipper. 3,000 spm. Available in 220V by special order. C25773V121

B. Model 610 Variable-Speed Clipper. 700-3,000 spm. C25774V121

C. Clipper Guard Set (For Blocking Beef Cattle)
Fits **Oster® ClipMaster®** Models 510 and 610 (C25773V121 and C25774V121, above), as well as **Oster® ShearMaster®** (C25775V121, listed on p. 61). Leaves animal's hair all one length. Helps beginners get the feel of using clippers, and eliminates mistakes that cannot be corrected. Great for fast blocking on sale cattle. Set includes ¼", ⅜", and ½" high guards, and 2 adapting screws. C12130V121



Product No.	Description
C00212V121	ClipMaster® bottom (84AU), leaves hair ¼"
C04738V121	ClipMaster® surgical (EAI-SUR), for veterinary use and freeze branding, clips as close as 0.002" to skin (for use with C00212V121, below)
C00211V121	ClipMaster® top (83AU)
C14859V121	Set of ClipMaster® bottom & top (see C00212V121 and C00211V121, above)

Bottom Blade

Top Blade

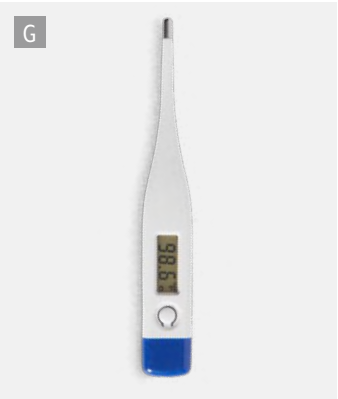
Blade Set



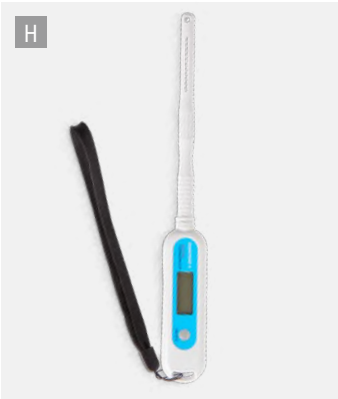
Tailwell® Titanium Power Tail Trimmer
Cordless drill attachment (power drill not included) with circular blades allows for quick and easy tail trimming. Titanium-nitride coating prevents the fast degradation that sand causes on cutters. Cutters will last up to 3,000 sand-embedded tails (or about 6,000 non-seriously contaminated tails). Trimming takes only a few seconds per tail. C36188V121 C36189V121 Replacement Blades Only



TailWell2® Power Tail Trimmer
Cordless drill attachment (power drill not included) with circular blades trims a dairy cow's tail quickly and easily. In just a few seconds, with no pre-cutting, the cow's tail is trimmed for a year. As the industry and consumers move away from tail docking, TailWell2® is a much better alternative over scissors and clippers. Lightweight, cordless drill attachment fits to a 14V, 1,200-1,700 rpm cordless drill. Minimal maintenance, only a few drops of oil every 20-25 tails. Hardened steel blades. C30821V121 C30822V121 Replacement Blades Only



D. Safe-Guard® Cattle & Horse Dewormer
Effective worm control for maximum performance and improved weaning weights. Very safe, no side effects or stress. Compatible with organophosphates. Controls brown stomach worm, barber pole worm, bankrupt worm, small stomach worm, coepparia, thread necked worm, hookworm, nodular worm, and lungworm. Safe for pregnant beef and dairy cattle (8-day withdrawal), and horses not intended for slaughter. 92 g tube (treats eight 500-lb. cattle). Not for sale in California. C15698V121



E. AG-Medix Animal Thermometer
Records temperature in 7 seconds. Water-resistant. Perfect for cattle, equine, and medium-sized animals. Armband/belt mount halster. Programmable alarm. Backlit LCD screen. Waterproof probes. Accuracy: ±0.1° F. Stores up to 25 peak temperatures. Rechargeable lithium battery gives 2-3 days of typical use on one charge. 2¾" L x 5" W x ¾" H. C33878V121 9 C34126V121 Replacement Angled Probe

F. Digital Long Probe Thermometer
3" stainless steel probe. Temperature units in Fahrenheit and Celsius. Easy-to-read LCD display. Temperature range: -58° F to 572° F (-50° C to 300° C). Accuracy: ±2°. Includes cover. C31630V121



H. Large Animal Digital Thermometers
Oral and rectal digital thermometers. Reads accurately. Wide and easy-to-read display window. Rounded tips. Fahrenheit.

9". With 5" L probe. C31434V121

7". With 3" L probe. C31433V121

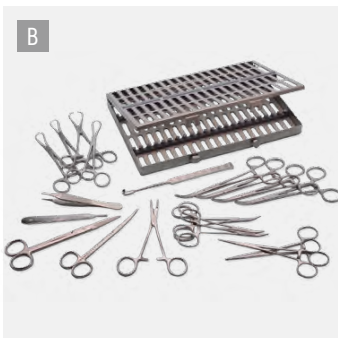
I. Handheld Thermistor Rectal Thermometer
Digital with max./min. memory. Hold button freezes reading. Auto shutoff. Sealed membrane touchpad. Backlit 0.4" LCD display. Temp. range: -40° F to 302° F (-40° C to 150° C). Resolution: 0.1° F or C. System accuracy: ±0.3° F (±0.2° C). 6½" x 2½" x 1½". Includes detachable, blunt-tip probe, carrying pouch, and 2 "AAA" batteries. C13618V121 C13618(A)V121 Replacement Probe Only

G. Digital Thermometer
Easy-to-read digital display. Requires only 60 seconds for sensing probe to take temperature. High-impact plastic case. Temp lock. Low-battery indicator. Auto shutoff. Temperature range: 89.6° F to 107.6° F. 5" L. C24798V121



A. Vet Tech Surgical Instrument Kit with Identification Flash Cards
Includes 29 of the most common instruments with display case and flash cards. Kit includes alligator forceps, Adson thumb tissue forceps, Babcock tissue forceps, Allis tissue forceps, bone chisel, Backhaus towel clamps, Brown-Adson thumb forceps, bone curette, Crile forceps, cold sterile tray, Gelpi retractor, DeBakey vascular thumb forceps, Kelly forceps, Halsted mosquito hemostatic forceps, Littauer suture removal scissor, Lister bandage scissor, Mayo-Hegar needle holder, Mayo dissecting scissors, Metzenbaum dissecting scissors, Olsen-Hegar needle holder, Rochester-Carmalt hemostatic forceps, rat tooth thumb forceps, Rochester-Pean forceps, Rochester-Ochsner forceps, Russian thumb forceps, Snook ovariectomy hook, Tenotome knife, Weilaner retractor, and wire suture cutting scissors. Includes care and handling instructions. **C33788V121**

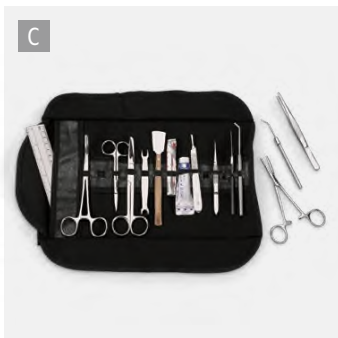
Vet Tech Surgical Instrument Flash Cards. Give your vet tech students a leg up on their next step toward college or career. Deck includes 29 cards, each with an image and description of the most important and common surgical instruments, such as alligator forceps, bone chisel, Gelpi retractor, Kelly forceps, Tenotome knife, and more. **NE40096V121**



B. General Surgery Basic Kit
This 20-piece kit includes one each of #3 scalpel handle, 6 1/2" straight Mayo scissors, 7" Snook ovariectomy, 7" curved Metzenbaum scissors, 7x7 teeth Brown-Adson forceps, 5 1/2" Olsen Hegar needle holders, and sterilization case; two 5 1/2" straight Kelly hemostatic forceps; three 5" curved mosquito hemostatic forceps; and four each of 6 1/4" curved Rochester Carmalt forceps, and 5/4" Backhaus towel clamps. Comes with care and handling instructions. **Z48512V121**

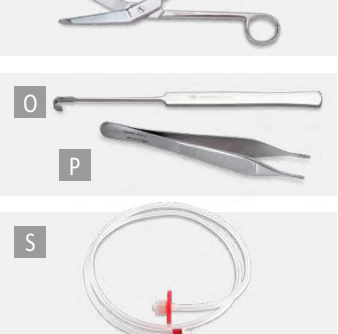
C. Large Animal Veterinary Kit
Contains a canvas roll case with 2 pockets; 6 1/4" stainless steel Peans hemostat; 5 1/2" stainless steel Kelly hemostat; No. 3 stainless steel scalpel handle; 6 No. 10 and No. 11 scalpel blades; 4 1/2" stainless steel iris scissors; 5 1/2" stainless steel operating scissors; 5 1/2" chrome, straight, medium-point forceps; 4 1/2" chrome, straight, fine-point forceps; 2 1/2" double-prong flesh hooks; 5/4" section lifter; 6" chrome probe and seeker; 6" celluloid ruler; and 2 metal straight dissecting needles. **SA01129V121**

D. Surgical Kit
Stainless steel instruments. Includes 5 1/2" thumb forceps, 5 1/2" tissue forceps, 6" Mayo-Hegar needle holder, 5" Halsted mosquito, 4 1/2" straight iris scissors, scalpel handle, 5 1/2" straight operating scissors, 5 1/2" Littauer stitch, 5 1/2" Lister bandage scissors, and 10 Sharpex surgical blades. **C28317V121**



E. Dissecting Kit
This 9-piece kit includes 4 1/2" dissecting scissors, 4" dissecting scissors, 5 1/2" dissecting forceps, 4" micro dressing forceps, #4 knife handle, straight teasing needle, angled teasing needle, #22 surgical blade, care and handling instructions, and roll-up canvas case. **C33789V121**

F. Veterinary Towels
Highly absorbent, cloth towels are ideal for veterinary use. 100% cotton. 16" x 28". Washable. Pack of 12. **C19070V121**



G. Kelly Hemostatic Forceps
Stainless steel with satin finish. 5 1/2"L. **C27278V121**

H. All-Purpose Shears
Stainless steel, fully hardened, with serrated nonslip cutting edge and plastic contoured handles. Autoclave up to 320°F. 8"L. **C09827V121**

I. Suture Tool Kit with Case Only
Set includes scalpel, forceps, needle holder, nylon suture and scissors in a soft case. **LF01011V121**

J. Olsen Hegar Needle Holder
Stainless steel, 6 1/2"L. Flat shank jaws, serrated. Ratchet-lock handle. **C00880V121**

K. Mayo Hegar Needle Holder
Highly polished stainless steel. Box-lock narrow jaw, serrated and indented. Ratchet-lock handle. 6"L. **C00879V121**

L. Lister Bandage Scissors
Surgical-grade stainless steel. Satin finish to reduce glare. **C19071V121** 7 1/4"L
C31429V121 5 1/2"L



M. Sharpex Disposable Scalpels
A great alternative to similar, higher-priced scalpels. Stainless steel blades. Single use. Box of 10. **C31425V121** Size 10
C31426V121 Size 22

N. Sterile Disposable Scalpels
Easy-to-use, sterile, and disposable. Stainless blade on plastic handle. Lightweight. No. 22 scalpel has a tapered handle and a thumb or finger rest for greater control. 6 1/4"L. Not autoclavable. Includes replaceable cover for blade protection. Box of 10. **C10931V121**

O. Snook Ovariectomy Hook
7"L (17.7 cm). **C32347V121**

P. Brown Adson Tissue Forceps
Surgical-grade stainless steel with 7x7 teeth. 4 3/4"L. **C19072V121**

Q. Braunamid Suture
Polyfil sutures are considerably more flexible than monofil. Size 2 USP. Consists of a large number of fine twisted strands covered by a smooth, seamless, homogeneous polyamide cover. Knot-pull tensile strength substantially exceeds USP requirements. Knot-holding is excellent because of its inner poly-filament. Noncapillary. Sterilized. Meets requirements set by U.S. government. 50 meters. **C28557V121**



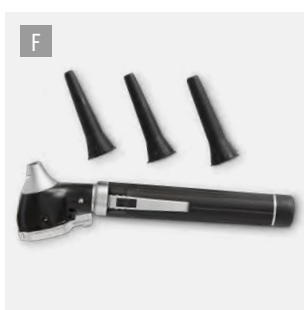
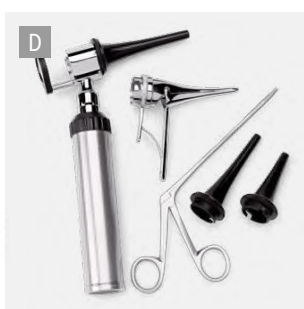
R. Suture Kit
Ethicon size 2-0 coated Vicryl (violet braided); 27" (7 cm) with a taper, CP-1 needle; sterile, synthetic, and absorbable suture. **C30642V121**

S. Slap-Shot® Flexible Vaccinator Tubing
Reduces injuries to the handler, wasted vaccine, and eliminates needle breakage in animals. Clear tubing with Luer-lock ends accept any standard Luer-lock needles or syringes. Remains flexible at subzero and 100°F+ temperatures. 30"L. For cattle and hogs. **C14747V121**

T. Sponge Gauze
100% pure cotton in 20x12 mesh is fully bleached. Meets USP standards. Bag of 200 sponge gauze squares (each 4" x 4"). **C28573V121**

U. Equine Brown Cling Gauze
3" x 5 yds. 100% pure cotton in fine 24 x 17 mesh. Pack of 12 rolls. **C25377V121**

V. Elastic Adhesive Bandage Tape
Stretchable woven fabric tape with red centering line to help make wrapping easier. Box of 4 rolls; each 3" x 5 yds. **C28578V121**



A. Spectrum® Dual-Head Stethoscope
Chrome-plated binaural, lightweight anodized-aluminum chest piece (1¼" dia.), 22" vinyl Y-tubing, spare diaphragm, and a pair of soft ear tips. 30"L.
C12316V121

B. Dual Stethoscope
Dual head swivels for cardiac exams and breathing auscultation. 30"L. Colors may vary.
C34260V121

C. Vet-Laryngoscope Set
Bulb placement at left side and a modified blade removing the lip for better visibility when working with animals. Brass chrome-plated handle, 4 stainless steel Miller blades (sizes #0-#3), and plastic case.
C35525V121

D. Vet-Otoscope Kit
Open slot in head allows for forceps use. Bright LED light. Comes with a sturdy carrying case with protective lining inside for holding the otoscope, handle, forceps, expandable speculum, and 3 sizes of specula (4 mm, 6 mm, 7 mm). 3.25V operating veterinary otoscope comes with a glass überlegen lens with 5X magnification and added focal length to accommodate the longer veterinary speculas. Scratch-resistant, optical-quality lens.
C35524V121

E. Complete Otoscope/Ophthalmoscope Set
Includes an otoscope and ophthalmoscope in a black leather carrying case. Otoscope comes with 3 specula and magnified glass lens (5X magnification). Ophthalmoscope has an alligator forceps and speculum. Requires 3 "C" batteries (not included).
C35342V121

F. Veterinary Mini Fiber Optics Otoscope
Fiber optics otoscope with 3 specula in a pouch. Specula sizes: 9 x 29 mm, 10 x 29 mm, and 11 x 29 mm. 3V LED bulb. For veterinary use only; not for use on humans.
C34695V121

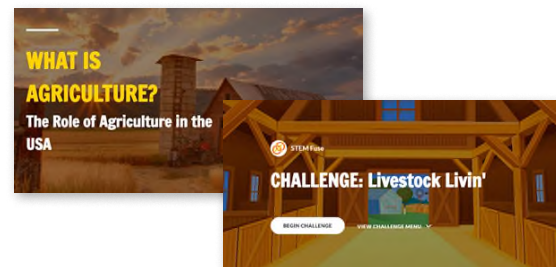
G. Ophthalmoscope
Diopter wheel with 23 corrective lenses: plus 1, 2, 3, 4, 5, 6, 8, 10, 15, 20, 25; and minus 1, 2, 3, 4, 5, 6, 8, 10, 12, 15, 20, 25. Easy to operate aperture hand wheel with semicircle, small/medium circle fixation star, slit, and red-free filter. Optimized high-performance optics with aspherical condenser lens. Parallel beam path. Dust proof. 3.5V xenon lamp. Requires 2 "AA" batteries (not included).
C34958V121

H. The Merck Veterinary Manual
A two-column format and use of color throughout make the text and tables easy to read. Color images enhance and illustrate text. This edition includes expanded coverage of exotics, material on zoonoses, and up-to-date chapters on new and emerging topics in veterinary medicine. 3,225 pages.
C26853V121

Prep students for AFNR careers with experiential learning

AFNR success has never been easier, no matter where your students are learning.

These standards-aligned digital courses cover core AFNR topics and provide students with opportunities for leadership, personal growth, and career success.



AFNR High School Digital Courses

- **Foundations in AFNR & STEM Careers** introduces students to the range of important ag opportunities.
- **Technical Skills in Agribusiness** presents hands-on, project-based activities.
- **Capstone Application** course allows students to develop and run a working cooperative.

NZ10429V121 Foundations Only
NZ10430V121 Technical Skills & Capstone
NZ10431V121 High School Bundle

Students will gain experience working in these AFNR career clusters:

- **Agribusiness Systems & Marketing**
- **Animal Systems Biotechnology**
- **Food Production & Processing**
- **Natural Resources & Environment Systems**
- **Plant Systems & Horticulture**
- **Ag Power, Structure and Technology**

Hand-Powered 2-Stroke Gas Engine Model

Product Number: C33565

Grades 9-12.

Shows the internal structure and operating principles of an air-cooled two-stroke engine. A cross-section of the carburetor is shown. Hand-powered motion supplied through a crank demonstrates the moving parts of the engine. The crank shaft and piston cycle through the stages of the two-stroke process as the hand crank is rotated. A simulated spark plug uses a small lamp to indicate the firing point. Solidly constructed of aluminum and plastic. 10-1/2 in. x 6-1/2 in. x 5 in. model mounted on an 8 in. x 8 in. x 2-1/2 in. base with a placard that labels all the key components. Lamp requires two "AA" batteries (not included).



Specs

Item Weight: 4.50

Brand: Eisco

Age: 14 yrs. - 18 yrs.

Species: Humans

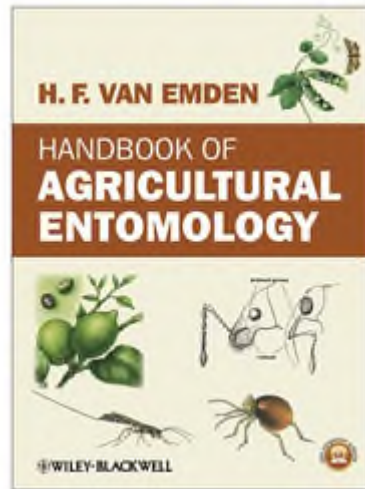
Career & Technical Education: Agriculture & Natural Resources

Subject Areas: Agricultural Education

Collections: Career & Technical Education

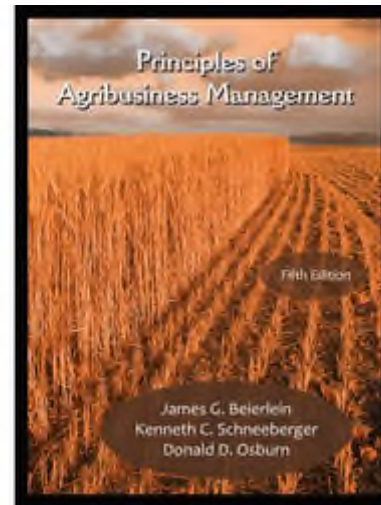
Grade: 9 - 12

School Type: High School



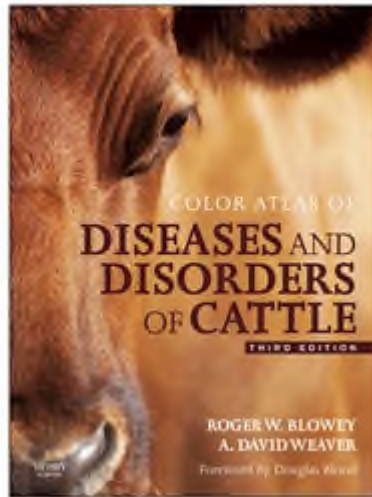
Handbook Of Agricultural
Entomology

Product #: C32861

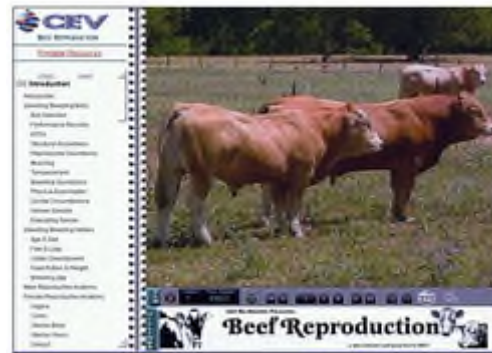


Principles Of Agribusiness
Management

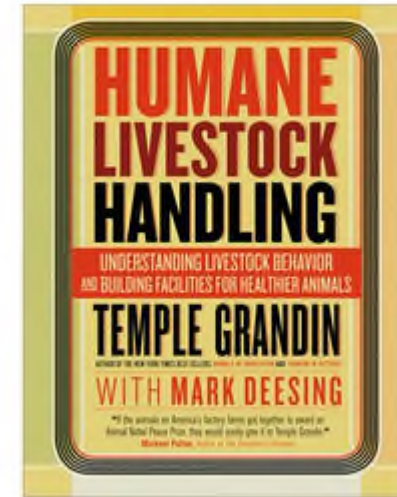
Product #: C30186



Color Atlas Of Diseases And Disorders Of Cattle
Product #: C26415



Beef Reproduction DVD
Product #: C27812



Humane Livestock Handling
Product #: C29257



Livestock Reproduction DVD
Product #: C30461



Cow Reproductive Organs Model
Product #: C06117



Cow Digestive System Model
Product #: C33289



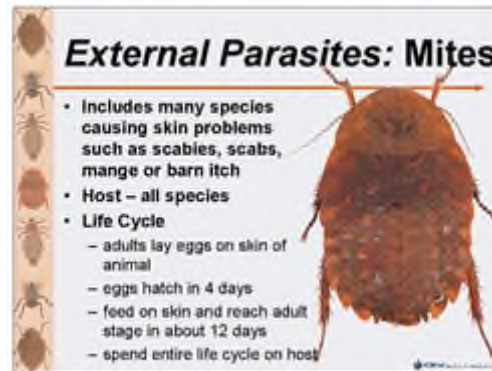
4D Vision™ Cow Model
Product #: SB49146



Acupuncture Models – Cattle
Product #: C35656



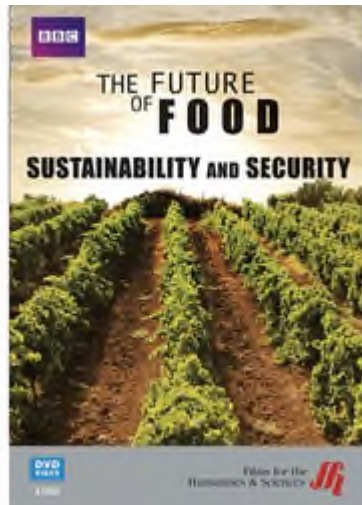
Meat Science & Food Safety
PowerPoint® Presentation
Product #: Z47132



Parasites Of Livestock
PowerPoint® Presentation
Product #: Z30855



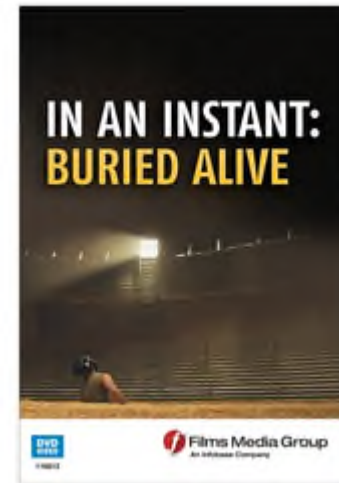
Agriculture, Food, And Natural
Resources Video Clip Library
Product #: Z50619



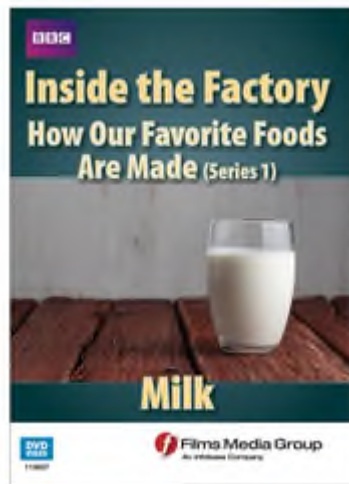
The Future Of Food: Sustainability
And Security
Product #: C31490



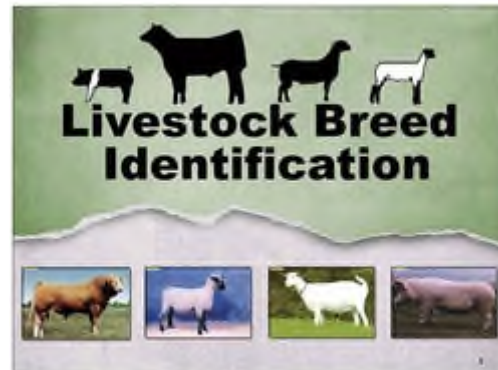
Retail Cut ID
Product #: Z47421



In An Instant – Buried Alive DVD
Product #: Z50475



Milk – Inside The Factory – How
Our Food Is Made – Series 1 DVD
Product #: Z50476



Livestock Breed Identification
PowerPoint® CD-ROM
Product #: C33059



Sheep Management Practices
DVD
Product #: Z45657



Parliamentary Procedure
Guidelines DVD
Product #: C30469



Food Processing: A Field Trip
DVD
Product #: WA27303



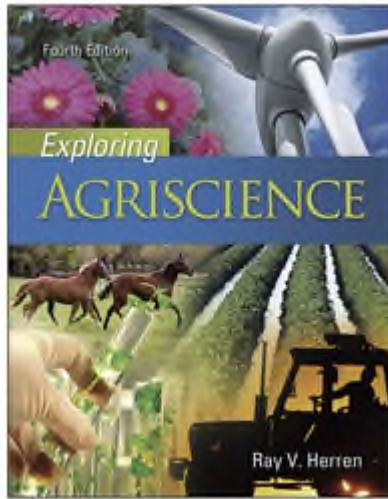
Food Science: Kitchen Mysteries
Revealed DVD
Product #: WA27302



Quality Control In Food
Technology DVD
Product #: Z47776



Digital Food DVD
Product #: Z50477



Exploring Agriscience
Product #: C31128



Mechanisms Of Herbicides
Product #: C31391



Water Treatment & Filtration Kit
Product #: SB45473



How Clean Is The Water We Drink
And The Air We Breathe?
Product #: SB26185



Innovating Science® AP®
Biology Lab – Investigation #5:
Photosynthesis
Product #: C32235



Bio Gas Test Kit
Product #: Z45902



Biofuels – Investigating Ethanol
Production And Combustion Lab
Product #: C29169



Climate Change Organisms As
Climate Indicators – Developed
By EDC
Product #: C34435



Nasco Habitation Station™ Tank
Product #: SB50659



Climate Change – Carbon Cycling
– Developed By EDC
Product #: C34433



Nasco Soil Erosion Simulator Kit
Product #: SB45434



Equine Skull & Teeth Model
Product #: Z45658



How To Judge Halter Horses –
DVD
Product #: C29021



Horse Judging Contest I – DVD
Product #: C29028



Replacement Teeth For Equine
Skull & Teeth Model
Product #: Z45659



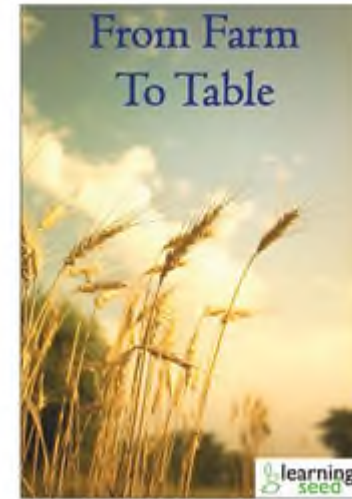
Acupuncture Models – Horse
Product #: C35657



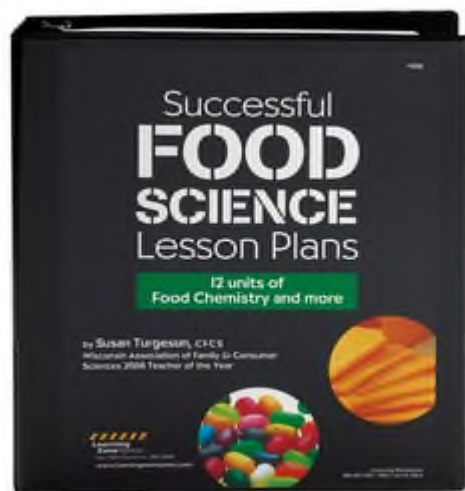
Cheesemaking Kit
Product #: SB13733



Animal Health And Food Safety –
Chicken Little – Chicken Big Kit –
Developed By SEPUP
Product #: C33792



From Farm To Table
Product #: Z45653



Successful Food Science Lesson
Plans

Product #: WA27901



Food Science Activities

Product #: WA27928



Nasco Food Technology Bingo
Product #: C23065



Nasco Animal Science Bingo
Product #: C23063



Nasco Animal Science Crossword
Puzzles
Product #: C17999



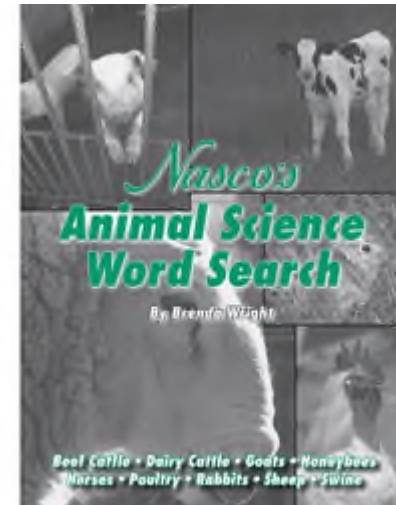
Nasco Agricultural Science Question Quest Card Set

Product #: C19597



Nasco Fish & Wildlife Management Bingo

Product #: C24030



Nasco Animal Science Word Search Puzzles

Product #: C24032



Nasco Livestock Judging Question
Quest Card Set
Product #: C24021



Nasco Environmental Bingo Game
Product #: SB32663



Nasco Taking Care Of Animals
Bingo
Product #: C23066



5-Minute Food Science Activities
Product #: WA28146



Plant Food - Nutrient Deficiency
In Plants
Product #: C31019



Plant Cloning Kit II (African
Violets)
Product #: C31392



Wisconsin Fast Plants® Growth
And Development Kit Refill
Product #: SB41047



Giant Dicot Flower Model
Product #: SB16058



Light Fixture For Full-Size Mobile
Light Cart
Product #: SB26463



Full-Size Mobile Light Cart
Product #: SB26462



Full Spectrum Tubes
Product #: SB41814



Commercial Crops Identification
Mounts Series
Product #: C25046



GROWLAB II™ Compact Garden
Product #: Z16826



Plant Pests: Fungal Diseases
Powerpoint®
Product #: C33052



OSM Natural Horticultural
Vinegar (20% Acetic Acid) –
1-gallon Bottle
Product #: C32411



Soil Classes, Preserved
Product #: LS00519



LaMotte Plant Nutrition Chemical
Package
Product #: SB10737



Gro-Mat – 38 In. X 17 In.
Product #: C26696



Chemical Composition Of The Soil
Product #: SB09431



Topsoil Tour From LaMotte
Product #: SB39333



Fluorescent Fixture
Product #: SB15185



Root Systems Display
Product #: SB47292



Biology And Chemistry Of Soil
Experiment
Product #: SB13757



Giant Dicot Flower Model - Student
Edition
Product #: SB33511



Typical Flower Model
Product #: C33284

(1)



Photosynthesis And Cellular
Respiration
Product #: C33050



Plant Cell Study
Product #: C33080



Nasco Elementary Soil Classes
Product #: SB43552



Decomposition Kit
Product #: SB28793



All-In-One Greenhouse
Product #: SB28559



Commercial Grains
Product #: C19940



How Soils Are Formed Collection
Product #: C30192



Soil Nutrients And Fertilizers Kit
Product #: C29170



Rootview
Product #: C09679



Jiffy-7® Peat Pellets – Packet Of
24
Product #: SA00407



Root-Vue Farm™
Product #: SB22804



Photosynthesis, Plants, And Food
Product #: SB46818



Investigating Plant Macronutrients
Using Hydroponics EXPAND-A-KIT
Product #: C34437



African Violet Cloning Kit
Product #: Z19120



Analysis Of Minerals And Soils
Product #: SB42189



Do Onions, Strawberries And
Bananas Have DNA? Kit
Product #: SB25276



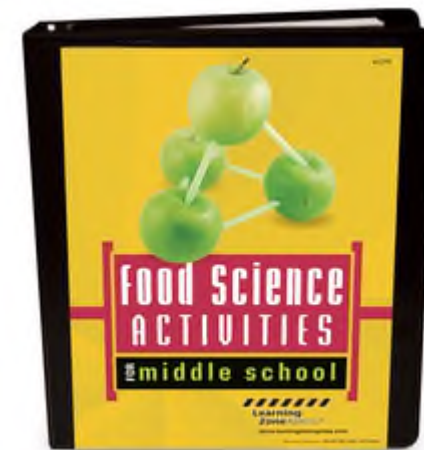
Professional Jiffy® Greenhouse
Product #: SB31095



Perma-Nest Plant Tray – 8 In. X
12 In. X 2-1/2 In.
Product #: SB15174



Genetics Of Corn Kit
Product #: SB41056



Food Science Activities For
Middle School Book
Product #: WA28701



Wisconsin Fast Plants® Standard
Seed – Pkg. Of 50
Product #: SB41049



16-Quart Bag Of Jiffy-Mix® Seed
Starting Soil
Product #: S08460



Bean Germination Display
Product #: SB47288



Humidity Domes For Perma-Nest
Plant Trays – 22 In. X 11 In. – Pack
Of 6

Product #: SB25128



Grolux Wide Spectrum
Replacement Lamp

Product #: SB33606

(1)



Introduction To Soil Kit

Product #: C29425



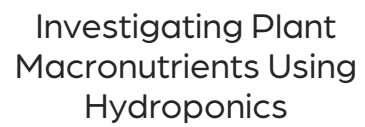
Soil Horizons
Product #: C34457



Kemtec™ Photosynthesis II:
Synthesis Of Starch By
Phosphorylase Kit
Product #: C32318



Jiffy-7® Peat Pellets – Case Of
1,000
Product #: SA07926



Crop Identification Kit

OPCOM® Farm GrowBox Hydroponics System

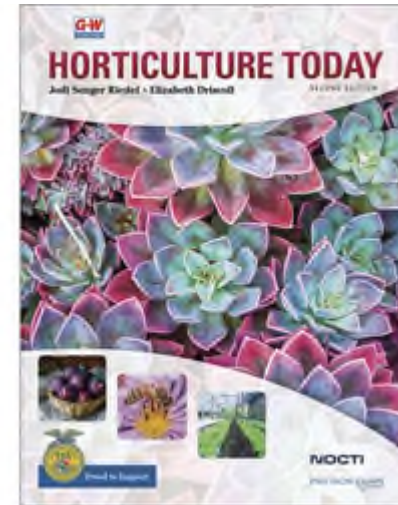
Product #: Z50809



OPCOM® Farm GrowBox2
Hydroponics System
Product #: Z50808



OPCOM® Farm GrowTank
Hydroponics System
Product #: Z50813



Horticulture Today
Product #: Z50618





Oak Collection Leaf And Seed
Display Mount
Product #: C36296



Western Oak Display Mount
Product #: C36297



Vermiculite
Product #: SB10713



Floral Arrangement Container
Product #: NE40087



Floral Wire
Product #: NE40086



Stem Wrap Floral Tape
Product #: NE40085



Silver Elastic Corsage Wristlet

Product #: NE40084



Harmful Insects
Product #: SB26424



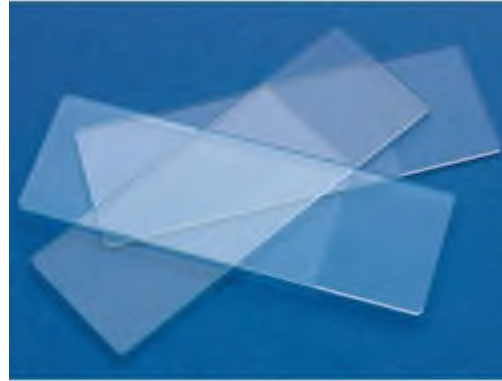
Garden Insects Collection
Product #: SB26425



Beneficial Insects
Product #: C16573



Corning® Scholar® Hot Plate
Product #: SB45547



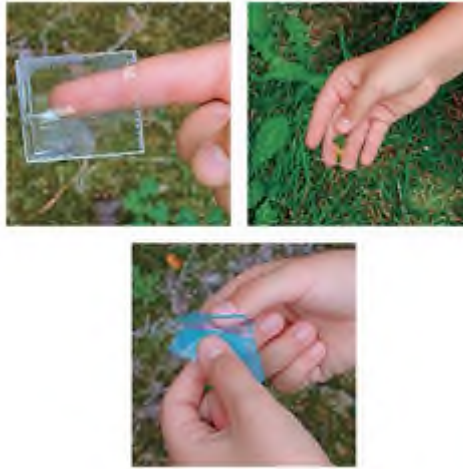
Frosted Glass Microscope Slides
Product #: C32478



Glass Microscope Slides – Single –
Concave – Box Of 12
Product #: SB15360



Student Grade Slide Set – Insects
Product #: SB47786



Nasco Sticky Slides
Product #: SB38432



Digital Scale
Product #: WA26488



Veterinary Urinalysis Simulation
Product #: C34432



PYREX® VISTA™ Glass Beaker –
250 MI
Product #: SB46188



Nasco Middle School Standard
Microscope With Add-on
Mechanical Stage Side Adjustment,
20-watt LED Illumination
Product #: SB25252



Nasco Standard Stereo
Microscope – 30X Magnification
Product #: SB26447



OHAUS® Triple Beam Balance
With Stainless Steel Platform
Model: 750-SO
Product #: SA04387



Sper Clinical Portable
Refractometer
Product #: SB48374



Nasco Middle School Standard
Microscope, 0.65 NA Condenser
5-Hole Disc Diaphragm, 20-watt
LED Illumination
Product #: SB24173



Petri Dishes – 150 Mm Diameter –
Package Of 10
Product #: SB45992



Petri Dish, Culture – Disposable
Product #: SA00371



Attachment Weights For Triple
Beam Balances
Product #: SA04482



Simulated Urinalysis
Product #: SB27229



Simulated Urinalysis Chemical Refill
Product #: SB27296



Practice Livestock Judging I – DVD

Product #: C28134



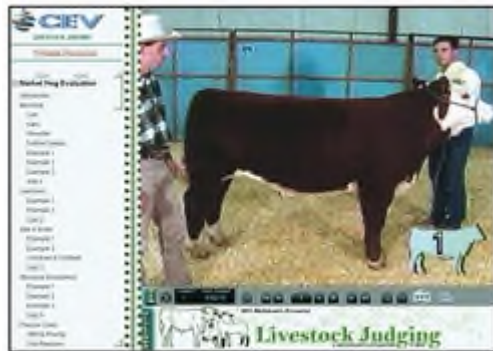
Dairy Cattle Judging & Evaluation DVD

Product #: C27808



Practice Dairy Cow Judging – DVD

Product #: C29102



Livestock Judging DVD

Product #: C27806



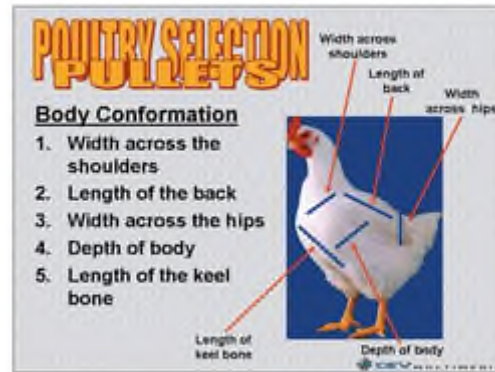
Meat Judging & Grading DVD
Product #: C27803



Beef Slaughter And Dressing - DVD
Product #: C29099



Eggs Of North American Birds
Product #: SB51345



Poultry Selection PowerPoint®
Presentation
Product #: Z30859



Poultry Judging: Practice Contest I
DVD
Product #: C30463



Poultry Judging: Practice Contest II
DVD
Product #: C33063



3-Part Hen Model
Product #: C33288

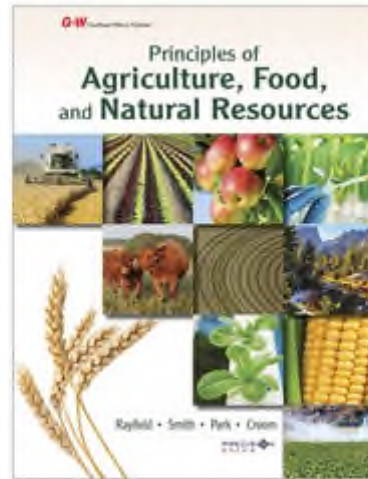


Luna™ 2.0 Interactive Projection
Camera
Product #: TB26743



Fertile Chicken Eggs – Live
Product #: Z10237

(2)



Agriculture, Food, And Natural
Resources
Product #: Z50620



NASCOGuard®, Fetal Pig – Size: 10 In.-13 In., Injection: Plain, Preserved
Product #: LS03787

(1)



Pictorial Anatomy Of The Fetal Pig
Product #: SB10320



Standard Polyethylene Pan With
Disecto Flex-Pad
Product #: SB15233



Swine Management Practices DVD
Product #: Z45656



Pig Dissection Mat
Product #: SB32578



Introductory Set – Elementary
Dissecting Kit
Product #: SB07839



Acupuncture Models – Pig

Product #: C35658



Fundamentals Of Forestry – DVD
Product #: C29061



Fruit Types Display
Product #: SB31336



Plant Press
Product #: SA02726



Replacement Vials
Product #: C33219



Absorption Paper
Product #: SA04460



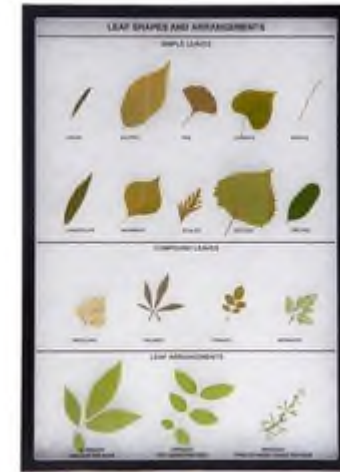
Plant Mounting Sheets
Product #: C09647



Fruit Types Exhibit
Product #: C34456



How A Tree Grows Kit
Product #: SB27513



Leaf Shapes And Arrangements
Display
Product #: SB31331



TickleMe Plant™ Growing Kit
Product #: C29747



Leaves And Seeds Of Common
Trees Identification Mounts
Product #: SB37259



Seed Structure And Enzyme Action
Product #: C27039



Super Touch Shoulder Glove
Product #: C27260



Plastic Disposable PPE Gloves –
Wrist Length
Product #: C06281



4 Mil Plastic Tie Jumbo Boots
Product #: C21039



Milker's Helpers Low-Powder
Disposable Gloves – Small, Box Of
100.

Product #: C29632



APE Band-A-Sleeve®

Product #: C29820



Surgical Scissors (One Point
Sharp/One Point Blunt) – 5-1/2 In.
Straight

Product #: SB10283



Rubberized Cloth Apron – 36 In. X
27 In.

Product #: C33044



Treader® Disposable Boots – XL–
Large

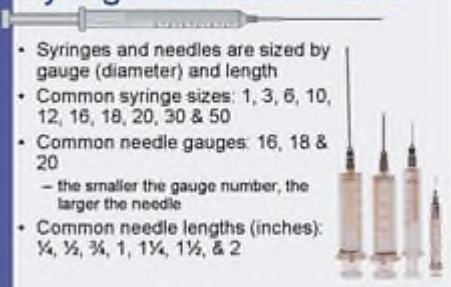
Product #: C32977



Adenna® Gold Latex Powder-
Free Exam Gloves – Medium

Product #: C31908


Syringe & Needle Sizes



- Syringes and needles are sized by gauge (diameter) and length
- Common syringe sizes: 1, 3, 6, 10, 12, 16, 18, 20, 30 & 50
- Common needle gauges: 16, 18 & 20
 - the smaller the gauge number, the larger the needle
- Common needle lengths (inches): $\frac{1}{4}$, $\frac{1}{2}$, $\frac{3}{4}$, 1, $1\frac{1}{4}$, $1\frac{1}{2}$, & 2

Immunizations: Injections And
Techniques PowerPoint®
Presentation
Product #: Z30852


Colic



- Improperly feeding, working or watering horses
- Symptoms:
 - distended abdomen
 - rolling and kicking
 - excruciating pain
 - sweating and constipation

Common Animal Diseases
PowerPoint® Presentation
Product #: Z30850

Dehorning Calves (Hot Iron)



- Procedure
 - heat iron to a cherry-red color
 - firmly restrain the calf
 - firmly apply the hot iron over the emerging horn bud
 - roll the hot iron around the base of the horn bud several times to ensure the skin around the bud is completely burnt through
 - the horn bud will drop off in due course

Basic Livestock Surgical
Procedures PowerPoint®
Presentation
Product #: Z30841



Elastic Top Boot – Light Duty – 3
Mil
Product #: C23472



Shoulder-Length Artificial
Insemination Glove
Product #: C30309



Red Breeder's Sleeves
Product #: C29336



Sterile Disposable Scalpels
Product #: C10931



Fingerless Mitts – Dispenser Pack
Product #: C06236



Shoulder Length Gloves –
Dispenser Pack
Product #: C06271



Environmental Chemistry: Acid
Rain, Weathering, And Erosion

Product #: C29411



PH, EC, And TDS Testing Kit For
Field Testing Of Soil, Water, And
Fertilizer

Product #: C24851



LaMotte Pondwater Tour Kit

Product #: SB26203



AcuRite® 5-in-1 Weather Station
With Color Display
Product #: SB50359



AcuRite® Color Weather Station
Product #: SB51160



Fish Farm™ With 24 In. X 24 In.
Window
Product #: Z29920



Nasco Individual Large-Sized Owl
Pellet
Product #: SB09759



Comparative Brains Display
Product #: SB47291



Comparative Hearts Display
Product #: SB47290



Nasco Advanced Track Mold Kit –
Volume 1
Product #: SB33680



Economy Fish Model
Product #: C33287



Fish (Carp) Model
Product #: C33285



Wildlife ID Techniques DVD
Product #: C27797



Careers In Wildlife Management –
DVD
Product #: C29087



Nasco Adult Coyote Sub Scat
Replica
Product #: LF05093



Nasco Bucket Of Scat
Product #: SB49923



Nasco Advanced Owl Pellet Kit
Product #: SB20192

По вопросам продаж и поддержки обращайтесь:			
Алматы (7273)495-231	Казань (843)206-01-48	Новокузнецк (3843)20-46-81	Смоленск (4812)29-41-54
Архангельск (8182)63-90-72	Калининград (4012)72-03-81	Новосибирск (383)227-86-73	Сочи (862)225-72-31
Астрахань (8512)99-46-04	Калуга (4842)92-23-67	Омск (3812)21-46-40	Ставрополь (8652)20-65-13
Барнаул (3852)73-04-60	Кемерово (3842)65-04-62	Орел (4862)44-53-42	Сургут (3462)77-98-35
Белгород (4722)40-23-64	Киров (8332)68-02-04	Оренбург (3532)37-68-04	Тверь (4822)63-31-35
Брянск (4832)59-03-52	Краснодар (861)203-40-90	Пенза (8412)22-31-16	Томск (3822)98-41-53
Владивосток (423)249-28-31	Красноярск (391)204-63-61	Пермь (342)205-81-47	Тула (4872)74-02-29
Волгоград (844)278-03-48	Курск (4712)77-13-04	Ростов-на-Дону (863)308-18-15	Тюмень (3452)66-21-18
Вологда (8172)26-41-59	Липецк (4742)52-20-81	Рязань (4912)46-61-64	Ульяновск (8422)24-23-59
Воронеж (473)204-51-73	Магнитогорск (3519)55-03-13	Самара (846)206-03-16	Уфа (347)229-48-12
Екатеринбург (343)384-55-89	Москва (495)268-04-70	Санкт-Петербург (812)309-46-40	Хабаровск (4212)92-98-04
Иваново (4932)77-34-06	Мурманск (8152)59-64-93	Саратов (845)249-38-78	Челябинск (351)202-03-61
Ижевск (3412)26-03-58	Набережные Челны (8552)20-53-41	Севастополь (8692)22-31-93	Череповец (8202)49-02-64
Иркутск (395)279-98-46	Нижний Новгород (831)429-08-12	Симферополь (3652)67-13-56	Ярославль (4852)69-52-93
Россия (495)268-04-70	Киргизия (996)312-96-26-47	Казахстан (7172)727-132	