

По вопросам продаж и поддержки обращайтесь:			
Алматы (7273)495-231	Казань (843)206-01-48	Новокузнецк (3843)20-46-81	Смоленск (4812)29-41-54
Архангельск (8182)63-90-72	Калининград (4012)72-03-81	Новосибирск (383)227-86-73	Сочи (862)225-72-31
Астрахань (8512)99-46-04	Калуга (4842)92-23-67	Омск (3812)21-46-40	Ставрополь (8652)20-65-13
Барнаул (3852)73-04-60	Кемерово (3842)65-04-62	Орел (4862)44-53-42	Сургут (3462)77-98-35
Белгород (4722)40-23-64	Киров (8332)68-02-04	Оренбург (3532)37-68-04	Тверь (4822)63-31-35
Брянск (4832)59-03-52	Краснодар (861)203-40-90	Пенза (8412)22-31-16	Томск (3822)98-41-53
Владивосток (423)249-28-31	Красноярск (391)204-63-61	Пермь (342)205-81-47	Тула (4872)74-02-29
Волгоград (844)278-03-48	Курск (4712)77-13-04	Ростов-на-Дону (863)308-18-15	Тюмень (3452)66-21-18
Вологда (8172)26-41-59	Липецк (4742)52-20-81	Рязань (4912)46-61-64	Ульяновск (8422)24-23-59
Воронеж (473)204-51-73	Магнитогорск (3519)55-03-13	Самара (846)206-03-16	Уфа (347)229-48-12
Екатеринбург (343)384-55-89	Москва (495)268-04-70	Санкт-Петербург (812)309-46-40	Хабаровск (4212)92-98-04
Иваново (4932)77-34-06	Мурманск (8152)59-64-93	Саратов (845)249-38-78	Челябинск (351)202-03-61
Ижевск (3412)26-03-58	Набережные Челны (8552)20-53-41	Севастополь (8692)22-31-93	Череповец (8202)49-02-64
Иркутск (395)279-98-46	Нижний Новгород (831)429-08-12	Симферополь (3652)67-13-56	Ярославль (4852)69-52-93
Россия (495)268-04-70	Киргизия (996)312-96-26-47	Казахстан (7172)727-132	

The safest dissections start here

Every specimen in this catalog has been prepared with NASCOGuard® — our nontoxic, low-odor humectant fluid that exceeds OSHA standards.

99.7% formaldehyde free

Our skilled technicians remove the original formaldehyde fixative in a series of water baths, then perfuse the specimens with propylene glycol to inhibit the growth of decay organisms, ensure moist specimens, and lower the vapor pressure of any residual formaldehyde.

Guaranteed to last for years

NASCOGuard® specimens will remain usable for years when stored in the original sealed packaging, so you can be confident of consistent results with expertly preserved specimens.

Three levels of color coding

Key structures are injected with colored latex for clear and visible differentiation of organs and structures, providing an enhanced learning experience.

Single injection



- Arteries shown in red

Double injection



- Arteries shown in red
- Veins shown in blue

Triple injection



- Arteries shown in red
- Veins shown in blue
- Hepatic portal system in yellow

200+ premium-quality specimens

We obtain our specimens through professional collectors, by-products of stockyards, and the food industry. All of these are processed and packaged by skilled technicians in our Wisconsin facility. We're licensed and/or governed by the U.S. Fish and Wildlife Service, the U.S. and Wisconsin Departments of Agriculture, and the Wisconsin Department of Natural Resources.

ONLY AT
NASCO



What's inside?

Dissection Materials pp. 4-21



NASCOGuard® Grey Perch, p. 9

Displays & Survey Sets pp. 22-23



NASCOGuard® Preserved Animal Survey Set, p. 23

Interactive Models pp. 24-25



Nasco Simulated Smoker's Lungs Demonstration Kit, p. 25

Equipment, Instruments & Accessories pp. 26-34



Instructor's Advanced Dissecting Kit, p. 27

How to store and dispose of your NASCOGuard® specimens

When your specimens arrive, keep them at room temperature and in the shipping bag/container they came in until you are ready to use them. Between classroom sessions, return specimens to a tightly closed plastic bag or airtight container to prevent them from drying out. If specimens begin to dry out over the course of an extended dissection, remoisten them with NASCOGuard® Humectant Fluid only (see right).

Specimens are biodegradable, so once the dissection is complete, they can be buried in an approved sanitary landfill or incinerated. Ambient fluids may be safely disposed via city sewers.



NASCOGuard® Humectant Fluid

Five 1-Gallon Bottles
SB17218M421
1-Gallon Bottle
SB12631M421

1-Quart Bottle
SB32395M421
1-Pint Bottle
SB32396M421

DISSECTION MATERIALS

Hands-on exploration has never been safer than with Nasco Education's dissection materials. Created using our exclusive 99% formaldehyde-free NASCOGuard® preserving solution, these low-odor materials are safer for the classroom and offer an enhanced dissection experience.



Squid (*Loligo*)

Learn the functions and structures of the squid, a perfect specimen for studying class cephalopoda. Order our dissection guide (SBI8116) for step-by-step instructions to assist with this dissection.

Product No.	Size	Injection	Qty.
LS01302M421	12"-16"	Plain	1
LS02420M421	12"-16"	Single	1
LS01304M421	12"-16"	Double	1
LS02421M421	8"-12"	Plain	1
LS02422M421	8"-12"	Single	1
LS03574M421	5"-8"	Plain	1

DISSECTION MATERIALS



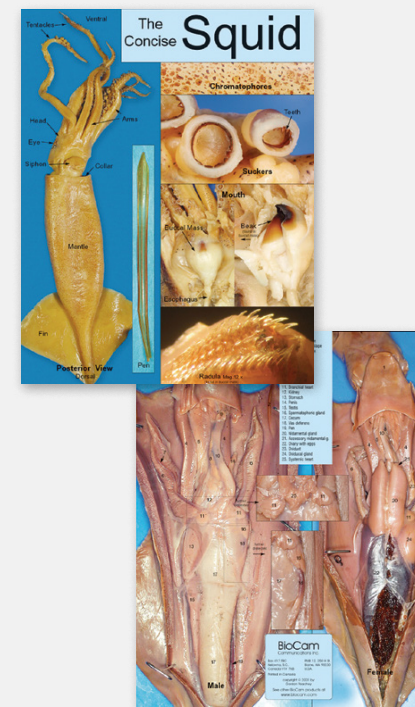
Clams, Mussels & Quahogs

Product No.	Type	Size	Qty.
LS03464M421	Freshwater Clams (<i>Unio</i> or <i>Anadonta</i>)	3"-4"	1
LS01083M421	Freshwater Clams (<i>Unio</i> or <i>Anadonta</i>)	4"-5"	1
LS03554M421	Blue Saltwater Mussel (<i>Mytilus</i>)	2"-3"	10
LS02416M421	Marine Quahog (<i>Venus mercenaria</i>)	3"-5"	1

Clam Classroom Kit

This kit includes 30 clams (4"-5", LS01083M421) and 30 Clam Dissection Guides (SB07320). Each student receives a guide to further explain the anatomy to work independently, in pairs, or groups.

LS03718M421



Squid Dissection Chart

Large images of specimen, key information, and helpful overview of specimen. Laminated double-sided sheet (8½" x 11") has prepunched binder holes. One-page guide explains chart in further detail.

SBS1999M421



Octopus (*Octopus bairdi*)
Small 2"-5" (5-12 cm).
LS01303M421

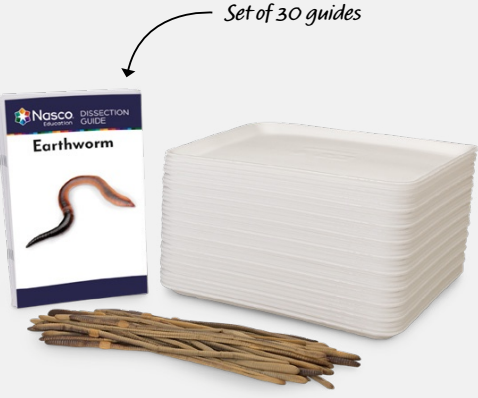
Unit of 10



Pig Roundworm (*Ascaris suum*)

Unit of 10. Mixed sex. Length will vary, but average size is 9".

LS01071M421



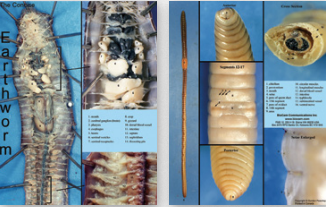
Set of 30 guides

Earthworm Classroom Kit
Includes 30 earthworms (8"-10", LS02407M421) and 30 earthworm dissection guides (SB07316M421) to allow students to work in pairs. LS03719M421


Nasco Earthworm Dissection Guide Set
Provides step-by-step instructions in a well-illustrated, useful guide for beginners and advanced students. Set of 15. SB07316M421



Sandworm/Clam Worm (*Nereis*)
Large, 8"+. LS01292M421



Earthworm Dissection Chart
Large images of specimen, key information, and helpful overview of specimen. Laminated double-sided sheet (8½" x 11") has prepunched binder holes. One-page guide explains chart in further detail. SB51998M421



Plain Single Injection

Earthworms (*Lumbricus terrestris*)
Earthworms are great for beginners and advanced students. These can be ordered with the circulatory system red (injection) or plain. Residual fluid is added to the sealed bag for long-term storage.

Product No.	Size	Injection	Qty.
LS02407M421	8"-10"	Plain	10
LS01081M421	8"-10"	Single	1



"Try It!" Worm Dissection Kit
Introduces students to the exploration of internal and external anatomy of a worm. Kit contains two single injected worms (8"+), dissection tools, plastic apron, illustrated guide, and latex-free gloves. LS03853M421



DISSECTION MADE EASY
Give students the confidence to start dissecting in class with all-in-one "Try It" kits



"Try It" Crayfish Dissection Kit
Introduces students to the exploration of internal and external anatomy of a crustacean. Invertebrate is easy to handle, easy to identify organs and structures, and works well with students of various ages. Safe, easy-to-use kit contains a 4"-6" plain crayfish, dissection tools, plastic apron, illustrated guide, and latex-free gloves. LS03852M421



Crayfish (*Cambarus*)

Product No.	Size	Injection	Qty.
LS01314M421	4"-6"	Plain	1
LS02428M421	4"-6"	Single	1
LS02952M421	3"-4"	Plain	1

Crayfish Classroom Pack
30 crayfish (4"-6", LS01314M421) and 30 crayfish dissection guides (SB07315M421), to allow each student to have their own dissection guide. LS03720M421

Nasco Crayfish Dissection Guide Set
A well-illustrated guide with step-by-step instructions, great for any classroom. Set of 15. SB07315M421



Grasshoppers

Product No.	Type	Size	Injection	Qty.
LS01319M421	(<i>Romalea microptera</i>)	Large	—	10
LS02440M421	(<i>Romalea microptera</i>)	Large	Tracheal system - yellow	10
LS03477M421	(<i>Brachy-stola magna</i>)	Large	—	10

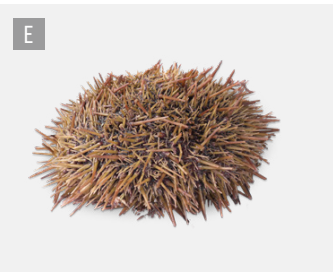
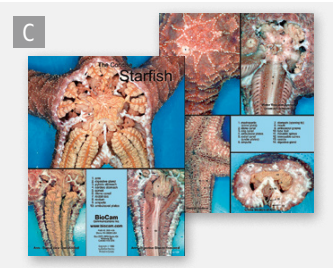
Grasshopper Classroom Pack
Includes 30 grasshoppers (3 units of LS01319M421) and 30 grasshopper dissection guides (SB07317). Each student receives a dissection guide to further explain external and internal anatomy to work independently, in pairs, or groups. LS03721M421



A. "Try It" Sea Star (Starfish) Dissection Kit
Introduces students to the exploration of internal and external anatomy of a specimen. Easy-to-follow directions allow students to dissect, observe, and document more about this unique invertebrate. Kit contains a 5"-6" plain sea star, dissection tools, plastic apron, illustrated guide, and latex-free gloves. **LS03851M421**

Product No.	Size	Injection	Qty.
LS03751M421	8"+	Plain	1
LS01074M421	6"-8"	Plain	1
LS01073M421	4"-6"	Plain	1
LS01305M421	3"-4"	Plain	1

Sea Star (Starfish) Classroom Kit
Includes 30 sea stars (4"-6", LS01073M421) and 30 dissection guides (SB07314). Great for a classroom of 30 students working independently, in pairs, or groups. **LS03722M421**



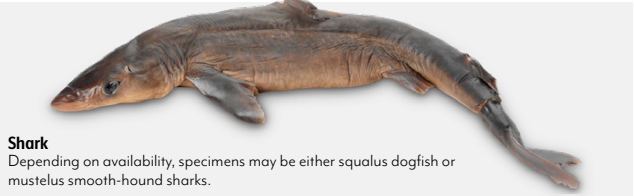
C. Sea Star (Starfish) Dissection Chart
Without adequate guides, students often need to do two or more costly dissections. This chart has been proven to substantially reduce these costs because students accomplish objectives with just one dissection. This chart provides large, beautiful images of living specimens. Also supplies key information and helpful for review. Double-sided card stock. 8½" x 11". Laminated. **SB51693M421**

D. Purple Sea Urchin (Arbacia)
Large. 2" (5 cm) average. **LS01311M421**

E. Green Sea Urchin (Strongylocentrotus sp.)
Large. 2" (5 cm) average. **LS02405M421**



Perch Dissection Chart
Double-sided, lifelike, laminated guide provides key information and helpful overview of anatomy. **SB52000M421**



Product No.	Size	Injection	Qty.
LS03741M421	Adult	Plain, Preg.	1
LS02472M421	Adult	Double, Preg.	1
LS02473M421	Adult	Triple, Preg.	1
LS03585M421	27" +	Plain	1
LS03586M421	27" +	Double	1
LS03587M421	27" +	Triple	1
LS02467M421	22"-27"	Plain	1
LS02469M421	22"-27"	Double	1
LS02470M421	22"-27"	Triple	1
LS03575M421	18"-22"	Plain	1
LS03588M421	18"-22"	Double	1
LS01348M421	Shark Head	Long cut	1




Grey Perch Classroom Kit
Includes 30 grey perch (7"-9", LS03689M421) and 30 perch dissection guides (SB07313M421) to allow each student to have their own dissection guide. **LS03778M421**

Nasco Perch Student Dissection Guide Set
A well-illustrated guide with a detailed description of external and internal structures. **Set of 15. SB07313M421**

Product No.	Size	Injection	Qty.
LS03690M421	9"-12"	Plain	1
LS03689M421	7"-9"	Plain	1
LS03691M421	5"-7"	Plain	1





LS03712M421


Grass Frogs (*Rana sp.*)

Product No.	Size	Injection	Qty.
LS03712M421	4½"-5½"	Plain	1
LS03713M421	4½"-5½"	Single	1
LS03714M421	4½"-5½"	Double	1
LS03715M421	4½"-5½"	Triple	1
LS02492M421	4"-4½"	Plain	1
LS02494M421	4"-4½"	Single	1
LS02496M421	4"-4½"	Double	1
LS02497M421	4"-4½"	Triple	1
LS01373M421	3"-4"	Plain	1
LS02493M421	3"-4"	Single	1
LS02495M421	3"-4"	Double	1

Frog Classroom Basic Kit
30 preserved frogs (4"-4½", LS02492M421) and 30 Frog Dissection Guides (SB10258M421, see p. 11), to allow each student to have their own dissection guide.
LS03724M421

Frog Classroom Standard Kit
Same as above (LS03724M421), but also includes 30 disposable dissection trays (SB41945M421, see p. 30).
LS03724(A)M421

Frog Classroom Deluxe Kit
30 sets of dissection tools/instruments (SB12623), 30 preserved frogs (3"-4", LS01373M421), 30 Frog Dissection Guides (SB10258M421, see p. 11), and 30 magnifiers (SB18007).
LS03749M421



LS01363M421

Bullfrogs (*Rana sp.*)

Product No.	Size	Injection	Qty.
LS02503M421	6"-7"	Plain	1
LS01362M421	6"-7"	Single	1
LS01363M421	6"-7"	Double	1
LS02509M421	6"-7"	Triple	1
LS02502M421	5"-6"	Plain	1
LS01365M421	5"-6"	Single	1
LS01366M421	5"-6"	Double	1
LS02508M421	5"-6"	Triple	1

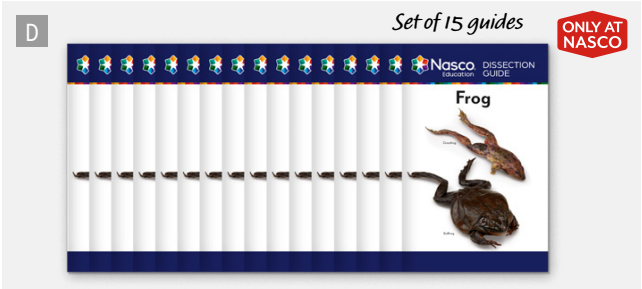
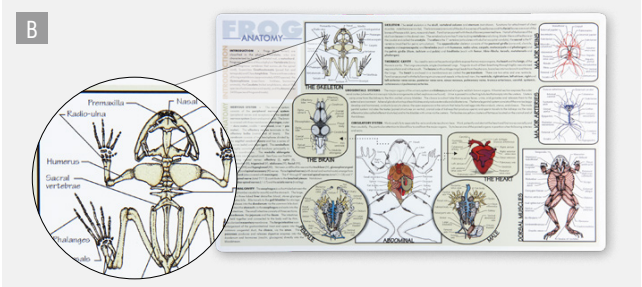
Bullfrog Classroom Kit
30 preserved plain bullfrogs (5"-6", LS02502M421) and 30 Frog Dissection Guides (SB10258M421, see p. 11), to allow each student to have their own dissection guide.
LS03824M421

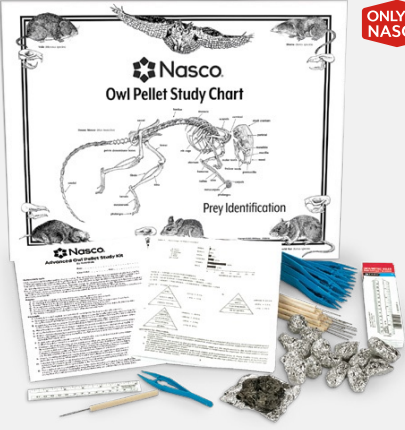
A. "Try It" Frog Dissection Kit
A great way of introducing students to the exploration of internal and external anatomy of an amphibian. This commonly used dissection amphibian is easy to handle, easy to identify organs and structures, and works well with students of various ages. Safe, easy-to-use kit contains a 4"-4½" frog, dissection tools, plastic anatomy apron, illustrated guide, and latex-free gloves.
LS03850M421

B. Frog Dissection Mat
Allows the student to follow the directions for a complete dissection without the worry of damaging books or paper. A complete frog dissection is printed directly on this 9½" x 16" polyvinyl mat. Resistant to spills, it is easily cleaned with a sponge or paper towel. More durable than laminated paper, this mat will last for many lab sessions.
SB52577M421

C. Frog Dissection Chart
Without adequate guides, students often need to do two or more costly dissections. This chart has been proven to substantially reduce these costs because students accomplish objectives with just one dissection. Chart provides large, beautiful images of living specimens. Also supplies key information and helpful review. Printed on both sides of laminated card stock. 8½" x 11".
SB51690M421

D. Nasco Frog Dissection Guide Set
Well-illustrated guide is intended to provide step-by-step instructions for the dissection of this common laboratory specimen. Classroom tested and proven to assist the student with self-guided instruction.
Set of 15.
SB10258M421





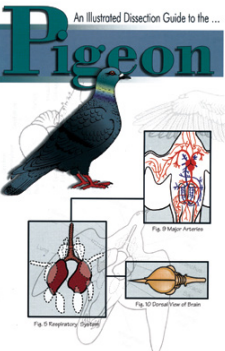
Nasco Advanced Owl Pellet Kit
Students learn about energy transfer through food chains while observing skeletal features that identify prey animals consumed. Kit includes 15 dried and fumigated owl pellets wrapped in aluminum, probes, vole chart, 15 student worksheets, and teacher's guide. Illustrations help identify common prey species.

ONLY AT NASCO

SB20192M421
SB09759M421 Additional Owl Pellets -
SB09759(SM)M421 Small Owl Pellets-




Nonvenomous Snake
20" average (50 cm). Species as available.
LS01422M421



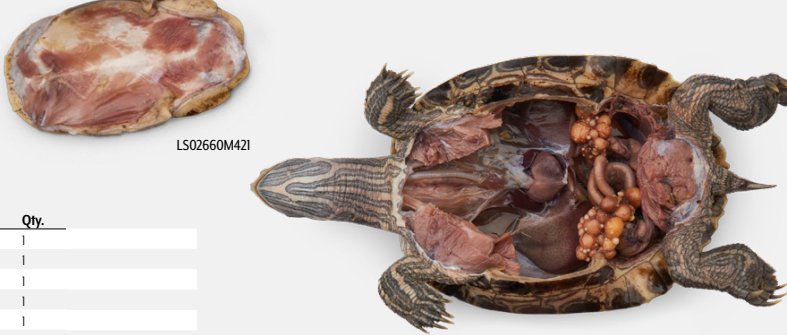
An Illustrated Dissection Guide to the Pigeon
Covers complete dissection, relationships among organisms, and functions of the structures. 12 detailed illustrations.

SB42374M421



Pigeons


Product No.	Size	Injection	Qty.
LS02667M421	Adult	Plain	1
LS02668M421	Adult	Single	1
LS02019M421	Adult	Double	1
LS02669M421	Adult	Triple	1



Turtles
Turtle species are either *Chrysemys* or *Trachemys*. Single-injected turtles have red latex injected into arterial system. Double-injected turtles also have blue latex injected into ventral abdominal, hepatic portal, and renal portal vein. Triple-injected turtles also have yellow latex injected into pre- and post-caudal veins.

LS02660M421

Product No.	Size	Injection	Qty.
LS02660M421	8"-10"	Plain	1
LS02662M421	8"-10"	Single	1
LS02663M421	8"-10"	Double	1
LS02664M421	8"-10"	Triple	1
LS02657M421	6"-8"	Plain	1
LS03487M421	6"-8"	Double	1




Rats


Product No.	Size	Injection	Qty.
LS03709M421	9"+	Plain	1
LS03576M421	9"+	Double	1
LS03577M421	9"+	Triple	1
LS01436M421	7"-9"	Plain	1
LS01437M421	7"-9"	Single	1
LS01438M421	7"-9"	Double	1
LS02523M421	7"-9"	Triple	1
LS02823M421	7"+	Double, Preg.	1

Rat Classroom Pack
Includes 30 rats (7"-9" plain, LS01436M421) and 30 rat dissection guides (SB29846M421), to allow each student to have their own dissection guide.

LS03763M421



Mouse
Plain, preserved. Sexually mature.
LS01433M421



Set of 15 guides

Nasco Rat Dissection Guide Set
A well-illustrated guide with detailed description of the muscularity, skeletal, and digestive systems. **Set of 15.**

SB29846M421

ONLY AT NASCO



ONLY AT NASCO



"Try It" Rat Dissection Kit
Introduce students to the exploration of internal and external anatomy with this fully mature specimen, whose anatomy is similar to a human's. Great for examining the muscular, reproductive, and skeletal structures. Kit contains a 7"-9" plain rat, dissection tools, plastic anatomy apron, illustrated guide, and latex-free gloves.

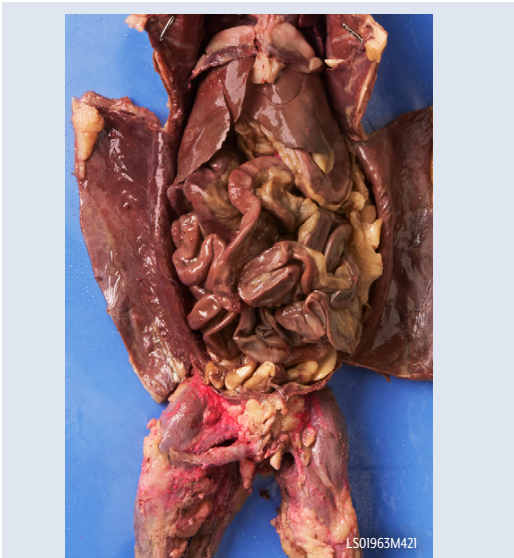
LS03848M421

Alternatives to the Cat



Rabbits

Product No.	Size	Injection	Qty.
LS02518M421	Large	Plain	1
LS02519M421	Large	Single	1
LS02020M421	Large	Double	1
LS02520M421	Large	Triple	1



Mink (Descended)

Readily available, well-muscled, and measures 13"-17" (34-44 cm) in length. Specimens are skinned with scent glands and external abdominal fat removed.

Product No.	Size	Injection	Qty.
LS02022M421	13"+	Plain	1
LS01963M421	13"+	Double	1
LS02054M421	13"+	Triple	1



Rabbit Dissection Guide

Can be used in anatomical study in biology, comparative anatomy for dissection units, or in any class where rabbit specimens are used. Illustrated. 25 pages.
SB45097M421

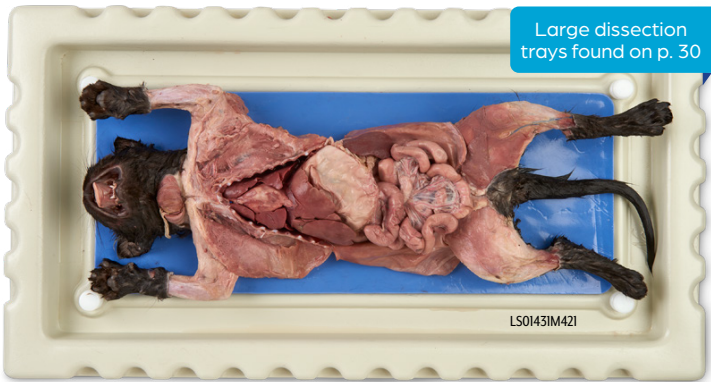
Preserved Mink & Dissection Guide Set

10 double-injected, preserved mink (13"-17", LS01963M421) and five copies of Mink Dissection guide (S08849M421). Specimens are skinned with scent glands and external abdominal fat removed.

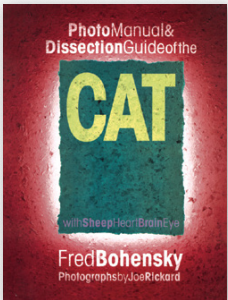
LS01963(B)M421

Mink Dissection Guide.

A complete dissection guide for classes in general and vertebrate biology. 60 pages.
S08849M421



Large dissection trays found on p. 30



Cats (with skin)

Product No.	Size	Injection	Qty.
LS03533M421	19"-23"	Plain	1
LS02505M421	19"-23"	Single	1
LS02907M421	19"-23"	Double	1
LS02506M421	19"-23"	Triple	1
LS02671M421	16"-23"	Double, Preg.	1
LS02672M421	16"-23"	Triple, Preg.	1
LS01429M421	14"-19"	Plain	1
LS01431M421	14"-19"	Double	1
LS03363M421	12"-14"	Double	1

Cats (skinned)

Product No.	Size	Injection	Qty.
LS03534M421	19"-23"	Plain	1
LS03535M421	19"-23"	Double	1
LS03536M421	19"-23"	Triple	1
LS03597M421	16"-23"	Double, Preg.	1
LS03598M421	16"-23"	Triple, Preg.	1
LS03556M421	14"-19"	Plain	1
LS03557M421	14"-19"	Double	1

Dissection Guide to the Cat

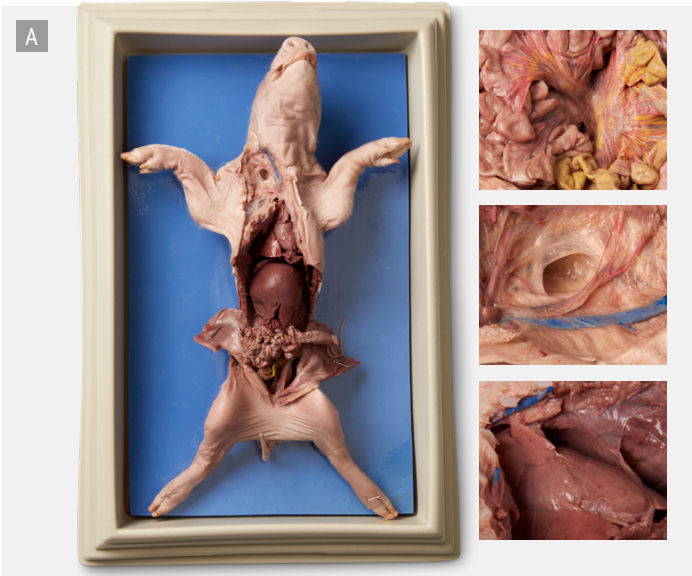
Photos and illustrations guide student through the study of anatomical structures. Accompanying text offers dissection instructions and factual information about the section under observation. Tests at the end of each chapter. 167 pages.
SB42224M421

Nasco Cat Anatomy and Mammalian Organ Study Set with Photographic Atlas

Specimens of a preserved cat (double injected), sheep heart, sheep brain, cow spinal cord, cow eye, and pig kidney come with storage bags and "A Photographic Atlas of Cat Anatomy: With Sheep Heart, Brain, Eye, Kidney Dissection." Shows actual specimens at different stages of dissection. Photos are arranged and listed by body system.
LS03710M421

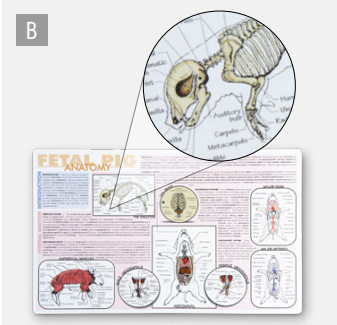
LS03711M421 Replacement Preserved Specimens





A. Fetal Pigs

Product No.	Size	Injection
LS03793M421	13"-16"	Triple
LS03792M421	13"-16"	Double
LS03791M421	13"-16"	Single
LS03790M421	13"-16"	Plain
LS03789M421	10"-13"	Double
LS03788M421	10"-13"	Single
LS03787M421	10"-13"	Plain
LS03786M421	7"-10"	Double
LS03785M421	7"-10"	Single
LS03784M421	7"-10"	Plain
LS03783M421	4"-7"	Plain



B. Pig Dissection Mat

Allows the student to follow the directions for a dissection without the worry of damaging books or paper. A complete pig dissection is printed directly on this 9 3/4" x 16" polyvinyl mat. It is resistant to spills and is easily cleaned with a sponge or paper towel.

SB32578M421

C. Fetal Pig Dissection Chart

Six photographic images (three on each side) portray an enlarged view of abdominal and thoracic regions. Important parts are numbered and labeled. Both 8 1/2" x 11" sheets come in protective sleeve and with prepunched binder holes.

SB50649M421



Fetal Pig Sagittal Section

Sagittal section of an 11"-12" artery-injected fetal pig for observing internal organs and vessels before starting dissection. Great demonstration tool in clear plastic bag to use as a demonstration model. Can be removed for dissection. Teacher's guide included.

LS03565M421

EXPLORE HUMAN ANATOMY WITH PRESERVED PIG ORGANS

Due to their similarities to human body systems and structures, preserved pig organs are the top choice for dissection labs everywhere

Pig Organs

An excellent way to closely study organs that are remarkably similar to a human's.

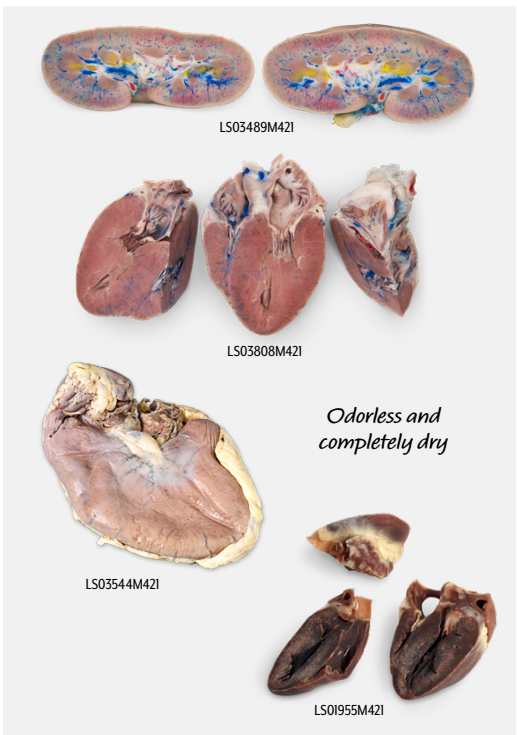
Product No.	Description
LS02530M421	Pig Heart
LS03808M421	Pig Heart, double injected, arteries (red), veins (blue)
LS03569M421	Pig Heart in pericardium
LS02532M421	Pig Eye
LS03352M421	Pig Kidney, plain
LS03353M421	Pig Kidney, double injected
LS03489M421	Pig Kidney, triple injected
LS03490M421	Pig Ovary
LS03491M421	Pig Uterus, nonpregnant, plain
LS03544M421	Pig Stomach
LS03593M421	Pig Small Intestine, 1 ft. section
LS03612M421	Pig Larynx w/epiglottis, vocal cords, and portion of trachea intact
LS01955M421	Nasco Dry-Preserved Pig Heart



Pig Organ Set

Get up close and personal with organs that are very similar to those of a human with this popular combination of preserved pig organs in a convenient storage box. Includes reclosable storage bag. Set includes one each of the four-chamber heart (4"-5", LS02530M421), eye (LS02532M421), kidney (plain, LS03352M421), and ovary (LS03490M421). Dissection guides for each organ are included.

LS03496M421



LS03489M421

LS03808M421

Odorless and completely dry

LS03544M421

LS01955M421




Nasco Dried Swine Lungs

Swine lungs are preserved, inflated to full size, and dried to produce a real odorless specimen. Lungs, once dried, are the consistency of Styrofoam™. Slice thin sections of specimen to observe alveoli and other structures under binocular microscope. Teacher guide included.

LS01956M421

Nasco Dried Lung Section. Perfect for observing the internal structures of the lung without having to slice a whole lung.


LS03686M421



LS03701M421 LS03546M421 LS03493M421

Sheep Organs

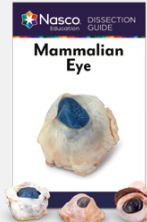
Product No.	Description	Qty.
LS03699M421	Sheep Head with eyes, brain and lower jaw	1
LS03698M421	Sheep Half Head with 1 eye, half brain, no lower jaw	1
LS01155M421	Sheep Heart	1
LS03701M421	Sheep Heart, double injected, arteries (red), veins (blue)	1
LS01152M421	Sheep Brain with cranial nerve roots	1
LS03354M421	Sheep Half Brain with cranial nerve roots	1
LS03570M421	Sheep Brain with hypophysis and cranial nerve roots	1
LS03546M421	Sheep Brain with dura mater	1
LS01439M421	Sheep Eyes	10
LS01440M421	Sheep Kidney	1
LS03493M421	Sheep Larynx with epiglottis, vocal cords, and portion of trachea intact	1
LS01627M421	Sheep Pluck: Heart, lungs, and trachea	1
LS03494M421	Sheep Testicle	1
LS03700M421	Sheep Uterus, pregnant, 3"-6" embryo	1



LS02798M421

Preserved Reproductive Tract From Cow

Complete female reproductive tract. Preserved with Nasco's exclusive Bio-Flex process. Can be kept in a plastic bag and used repeatedly for long periods of time.




Set of 30

Mammalian Eye Comparison

Observe, compare, dissect, and determine the subtle difference between sheep, cow, and pig eyes. Includes 30 eyes of each type and 30 mammalian eye dissection guides.


LS03828M421



LS01631M421 LS03488M421 LS03532M421

Cow Organs


Product No.	Description
LS01630M421	Calf Heart with base of aorta attached
LS01631M421	Calf Light: Heart, lungs, and trachea. Lungs embalmed
LS01628M421	Cow Eye
LS02533M421	Cow Spinal Cord, over 4" section
LS03488M421	Cow Uterus, nonpregnant
LS03532M421	Calf Testicles
LS03717M421	Beef Heart



Sheep Organ Set

Eye, brain, kidney, and heart in storage box. Includes resealable storage bag and dissection guides.

LS03140M421



Mammalian Anatomy Survey Set

Sheep heart with aorta, sheep brain (half), cow spinal cord, cow eye, pig kidney, and dissection guide for each.

LS03497M421



Cow Organ Set with Sheep Brain

A popular combination of cow organs in a convenient storage box. Includes storage bag. Consists of one cow eye, heart, spinal cord, and sheep brain. Dissection guides for each organ are included.

LS03495(SB)M421

3 SPECIMENS

Small

- 4"-6" Worm (with clitellum)
- 4"-7" Fetal pig
- 3" Frog

LS03817M421

6 SPECIMENS

Large

- 8"-10" Earthworm
- 3½"-5" Crayfish
- 4"-5" Clam

LS03558M421

- 5"-6" Sea star
- 7"+ Perch
- 3" Grass frog

Medium

- 6"-8" Earthworm
- 3"-4" Crayfish
- 3"-4" Clam

LS03498M421

- 3"-5" Sea star
- 5"-7" Perch
- 3" Grass frog

7 SPECIMENS

Large

- 8"-10" Earthworm
- Lubber grass-hopper
- 3½"-5" Crayfish

LS03559M421 -

- 4"-5" Clam
- 5"-6" Sea star
- 7"+ Perch
- 3" Grass frog

Medium

- 6"-8" Earthworm
- Lubber grass-hopper
- 3"-4" Crayfish

LS01570M421

- 3"-4" Clam
- 3"-5" Sea star
- 5"-7" Perch
- 3" Grass frog

8 SPECIMENS

Large

- ½"-¾" Grantia (Scypha)
- 8"-10" Earthworm
- Lubber grass-hopper

LS03560M421

- 3½"-5" Crayfish
- 4"-5" Clam
- 5"-6" Sea star
- 7"+ Perch
- 3" Grass frog
- 7"-10" Fetal pig

Medium

- ¼"-½" Grantia (Scypha)
- 6"-8" Earthworm
- Lubber grass-hopper

LS03499M421

- 3"-4" Crayfish
- 3"-4" Clam
- 3"-5" Sea star
- 5"-7" Perch
- 3" Grass frog

9 SPECIMENS

Set 1 - Large

- ½"-¾" Grantia (Scypha)
- 8"-10" Earthworm
- Lubber grass-hopper

LS03578M421

- 3½"-5" Crayfish
- 4"-5" Clam
- 5"-6" Sea star
- 7"+ Perch
- 3" Grass frog
- 7"-10" Fetal pig

Set 1 - Medium

- ¼"-½" Grantia (Scypha)
- 6"-8" Earthworm
- Lubber grass-hopper

LS03563M421

- 3"-4" Crayfish
- 3"-4" Clam
- 3"-5" Sea star
- 5"-7" Perch
- 3" Grass frog
- 4"-7" Fetal pig

Set 2 - Large

Same as LS03578M421 above, except fetal pig is replaced with a 9" rat.

LS03705M421

Set 2 - Medium

Same as LS03563M421 above, except fetal pig is replaced with a 7"-9" rat.

LS03706M421

Buy in bulk and save on packing, container, and labor costs. Shipped in easy-to-store cartons with small specimens in separate jars.

5 Specimen - Large (10 of each)

- 3½"-5" Crayfish
- 4"-5" Clam
- 5"-6" Sea star

LS03602M421

- 7"+ Perch
- 3" Grass frog

5 Specimen - Medium (10 of each)

- 3"-4" Crayfish
- 3"-4" Clam
- 3"-5" Sea star

LS03601M421

- 5"-7" Perch
- 3" Grass frog

7 Specimen - Large (10 of each)

- 8"-10" Earthworm
- 3½"-5" Crayfish
- 4"-5" Clam
- 5"-6" Sea star

LS03604M421

- 7"+ Perch
- 3" Grass frog
- Lubber grass-hopper

7 Specimen - Medium (10 of each)

- 6"-8" Earthworm
- 3"-4" Crayfish
- 3"-4" Clam
- 3"-5" Sea star

LS03603M421

- 5"-7" Perch
- 3" Grass frog
- Lubber grasshopper

Zoology Survey Sets

Preserved specimens are individually packaged and shipped moist in vapor barrier plastic bags. Vacu-Pac process eliminates over 50% of shipping weight incurred with using fluid in breakable jars, as well as offering extended shelf life of several years. Small specimens are in a glass vial within the Vacu-Pac plastic. Reclosable storage bag included with each set.



Grantia (Scypha)




Earthworm



Lubber grasshopper




Crayfish



Clam



Sea star (Starfish)



Perch



Grass frog



Fetal pig



Cause of Death Autopsy Kit
Follow the steps a medical examiner would take as students conduct an authentic forensic autopsy. A complete activity guide will take your students through step-by-step instructions of the medical examiner process. The three fetal pigs represent victims with stab wounds, gunshot wounds, or a broken back. Use the scientific method in real-life applications as your students investigate the demise of these pigs. Kit includes three 10"-13" pigs, suture needle, nylon thread, data cards, bags, and a complete activity guide.
LS03825M421 –
Refill Kit. Three pigs and data cards.
LS03825/CB/M421



Nasco Vertebrate Organ Comparison Kit
The ideal way to compare the anatomy of common vertebrates including a sparrow, bullfrog, rat, fish, and turtle. The activity guide will take you through a step-by-step, hands-on comparison of external and internal anatomical structure. Containers are provided for storage of extracted organs.
LS03806M421



"Try It" Dissection Kits
Introduce students to the exploration of internal and external anatomy of a specimen. Each kit is equipped with a preserved specimen, dissection tools, a plastic apron, an illustrated guide, and latex-free gloves. Dissection tray not included. Kits are a great option for take-home lessons in distance learning situations or for in-class labs when sharing of supplies is not allowed.

Fetal Pig. 7"-10" plain fetal pig. LS03815M421	Crayfish. 4"-6" plain crayfish. LS03852M421
Rat. Fully mature, 7"-9" plain rat. LS03848M421	Worm. 2 single injected worms (8"+). LS03853M421
Perch. 7"+ plain perch. LS03849M421	Squid. 8"-12" plain squid. LS03854M421
Frog. 4"-4½" plain frog. LS03850M421	Cow Eye. LS03859M421
Sea Star (Starfish). 5"-6" plain sea star (starfish). LS03851M421	Clam. 4"-5" plain clam. LS03861M421



All-in-one "Try It" kits include specimen, tools, apron, gloves and an illustrated guide



Animals of the Seashore
12 individually bagged specimens. Includes 1 each of the following:

• Shrimp	• Chiton	• Dogfish pup or seahorse
• Goose barnacle	• Sea urchin	• Blue mussel
• Sandworm	• Scallop	• Fiddler crab
• Sand dollar	• Sea star	
• Sea clam		

LS02837M421



Specimen Set Only
Specimens include: earthworm, crayfish, clam, grasshopper, sea star (starfish), perch, and frog.
LS03737M421 With Dissection Guides
LS02893M421 Without Dissection Guides

Nasco Dissection Guides Set Includes 15 guides for each of the 7 specimens listed above. 5½" x 8½". Set of 105. SB1112M421	Nasco Individual Guide Set Includes 1 guide for each specimen listed above. Set of 7. SB23166M421
--	--

DISPLAYS & SURVEY SETS

Looking for ways to augment biology lessons? Our selection of displays and survey sets allow students to observe and gather information in the dissection lab about the classification of organisms and organ identification.

GET A CLOSER LOOK

With study sets, students can observe and learn more about specimens in class



Nasco Hands-On Invertebrate Study Set

By Gari Walz.

Allows students an opportunity to learn about the classification of organisms. Set includes a comprehensive teacher's guide, 15 illustrated student guides with activity sheets, questions and answers for classroom review, an illustrated guide representing one or more animals from each of the invertebrate phyla (Porifera, Coelenterata, Platyhelminthes, Nematoda, Annelida, Mollusca, Echinodermata, Cnidaria, and Arthropoda), 13 preserved specimens in individually labeled jars that correspond to included key sheet, and 15 handheld magnifiers.

LS03736M421

Set of Replacement Specimens. Includes at least one representative member of the phyla Porifera, Cnidaria, Platyhelminthes, Mollusca, Annelida, Arthropoda, and Echinodermata.

LS03716M421

ONLY AT
NASCO

DISPLAYS & SURVEY SETS

Animal Survey Set A

Set consists of at least one representative member from each of the following phyla: Porifera, Platyhelminthes, Cnidaria, Echinodermata, Annelida, Mollusca, Arthropoda, and Chordata.
LS03547M421

Animal Survey Set B

Set consists of at least one representative member from each of the following phyla: Chordata, Porifera, Mollusca, Arthropoda, Euarthropoda, and Echinodermata.
LS03548M421

Combination Survey Set

Includes all specimens in sets A and B. This combination shows the wide range of variation found throughout the animal kingdom.
LS03549M421



Animal Survey Set A



Animal Survey Set B

ONLY AT
NASCO



Arthropod Survey Set

Set consists of at least one representative member of the following classes: Crustacea, Chilopoda, Diplopoda, Arachnida, and Insecta.
LS03613M421

ONLY AT
NASCO



Basic Animal Kingdom Survey Set

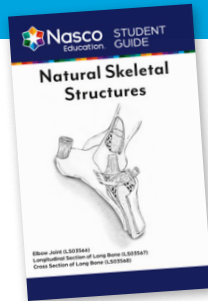
This set consists of at least one representative member of the following major phyla: Porifera, Coelenterata, Brachiopoda, Ctenophora, Platyhelminthes, Nematoda, Mollusca, Annelida, Arthropoda, Echinodermata, and Chordata.

LS03550M421

ONLY AT
NASCO

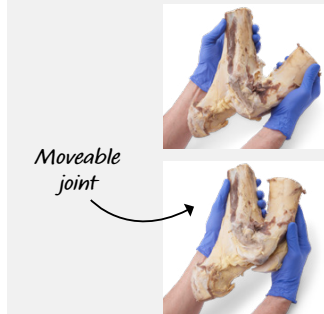
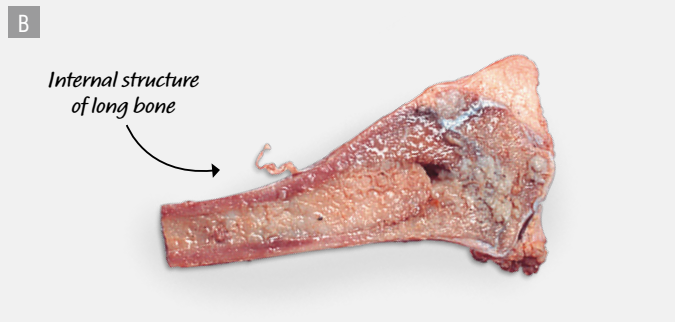
INTERACTIVE MODELS

Don't just tell them, show them! With these accurate models, students will be able to see, touch, and experience anatomical structures in a true-to-life way. By their interactions, they may be inspired to explore career paths in medicine, healthcare, research, and more.



LEARN MORE ABOUT BONES

The included dissection guide is an informative resource for students to use when examining skeletal structures in the classroom



Natural Skeletal Structures

A. Elbow joint. Front elbow joint of a cow with articulating surfaces, synovial joint cavity, ligaments, bursae, cartilage, bones, muscle origin, muscle insertion, and tendons easily identified. Moveable joint preserved in Nasco's exclusive Bio-Flex process. Includes dissection guide.
LS03566M421

B. Longitudinal Section of Long Bone. Front leg bone of a cow sectioned longitudinally to allow viewing of internal structure. Periosteum, solid bone layer, spongy bone, medullary canal, yellow bone marrow, red bone marrow, and epiphyseal line are evident. Head of long bone shows articulating surface of hyaline cartilage. Includes dissection guide.
LS03567M421

C. Cross Section of Long Bone. Front leg bone of a cow transversely sectioned to illustrate concentric rings, haversian canal, yellow bone marrow, and periosteum membrane. Bone is sectioned 3/4 inch thick. 10 per package. Includes dissection guide.
LS03568M421

INTERACTIVE MODELS



Feel the texture and fragility of lungs

Nasco Inflatable Lungs Comparison Kit with Teacher Instructional DVD
Inflatable lungs provide an impressive and unforgettable hands-on demonstration by using real swine lungs. The inflatable lung comparison kit is designed to demonstrate the effects of prolonged smoking, as well as compare the differences in color and texture of a simulated smoker's lung and a healthy lung. Nasco uses BioFlex, a nontoxic solution that retains the texture and elasticity of fresh lungs, to preserve them. The smoker's lungs have a palpable internal tumor and a physical simulated external tumor to encourage students to feel the texture of real lung tissue and its variations. This kit includes an inflation rack assembly with tray, an air pump, a simulated healthy and smoker's lung, a dried cross section of a lung, an instructional DVD, a teacher's guide, and storage containers. The guide provides a detailed illustration of internal/external anatomy and supplemental information about lung cancer, other smoking related diseases, and air pollutants as well as guidelines for handling, use and storage of the reusable swine lungs. ⚠ CHOKING HAZARD (1). Not for under 3 yrs.
LS03769M421



D. Nasco Healthy Inflatable Lungs Kit
Students can see and learn how lungs work by inflating and deflating them with a pump. Includes an inflation rack and tray, air pump, pair of reusable, inflatable swine lungs, a section of dried swine lung, a teacher's guide, and a container for storing the lungs.
LS03765M421
LS03764M421 Nasco Inflatable Healthy Lungs Only

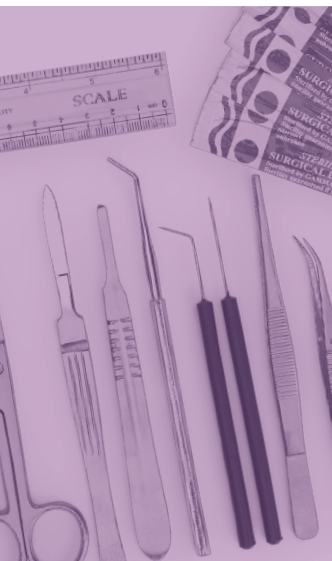
E. Nasco Dual Lungs Comparison Kit
Interconnected airway system with dual trays, air pump, pair of normal inflatable swine lungs, pair of simulated smoker's lungs, dried swine lung section, and 2 guides.
LS03802M421
Dual Lung Rack Update Kit. Converts inflatable lung comparison kit to dual lung rack.
LS03805M421

F. Nasco Smoker's Lungs Demonstration Kit
Realistically stained inflatable swine lungs provide an unforgettable demonstration of prolonged smoking. Simulated internal and external tumors on each lung remind that smoking is a known cause of lung cancer. Kit includes a teacher's guide, inflation rack and tray, air pump, dried cross section of unstained lung, and simulated smoker's lung.
LS03767M421
LS03766M421 Replacement Simulated Smoker's Lungs Only

Nasco Lungs Maintenance Kit
Includes necessary materials plus special instructions for prolonging the life of your inflatable lungs.
LS03758M421
SB29032M421 Bellows pump

EQUIPMENT, INSTRUMENTS & ACCESSORIES

You're only halfway there if you don't have the right tools for the right lesson. Supply students with a full assortment of quality equipment and instruments. From safety equipment to dissection kits, Nasco Education has you and your classroom covered.



Instrument Sorting Tray
5 compartments, 20½" x 11¼" x 2".
SB25286M421

Classroom Dissection Instrument Sets

A set of quality dissection instruments for the entire classroom. Instruments come in a sorting tray. Two different sets are available to choose from for 30 students working in pairs.



A. Stainless Steel Grade Set A consists of:

- (15) 4½" stainless steel dissecting scissors (SA01146)
- (15) No. 4 stainless steel surgeon's handles (SB07833)
- (20) No. 22 scalpel blades (SB09348)
- (15) 4½" fine-point, stainless steel forceps (SB12629)
- (15) Straight steel teasing needles (SB10275)
- (15) Angular chrome probe and seekers (SB07838)
- (1) Box of 2" dissecting pins (SA01463)
- (1) Instrument sorting tray (SB25286)

SB15428M421

B. Chrome Grade Set B consists of:

- (15) 4½" chrome dissecting scissors (SA01145)
- (15) Chrome safety-look scalpels. Includes No. 22, scalpel blades (SA01177)
- (15) 4½" fine-point, chrome forceps (SA01134)
- (15) Straight wood handle teasing needles (SB15414)
- (15) Bent plastic handle teasing needles (SB15415)
- (1) Box of 2" dissecting pins (SA01463)
- (1) Instrument sorting tray (SB25286)

SB15429M421

EQUIPMENT, INSTRUMENTS & ACCESSORIES



Biology Dissecting Kit with Case

No. 4 stainless steel scalpel handle, 1½" stainless steel narrow blade scalpel, 5½" stainless steel sharp/sharp scissors, 4½" stainless steel straight iris scissors, 5½" stainless steel thumb forceps, 4½" chrome curved medium-point forceps, 6" chrome probe and seeker, 6" ruler, straight dissecting needle, bent dissecting needle, dropping pipette, 6 No. 22 scalpel blades, and vinyl case with compartments for 12 instruments.

SB10272M421



Biology Dissecting Kit

Double fold vinyl case with lining; 1½" stainless steel scalpel; 1½" stainless steel narrow blade scalpel; 5½" stainless steel sharp/blunt scissors; 4½" stainless steel iris scissors; 4½" chrome, straight, fine-point forceps; 4½" chrome, curved, fine-point forceps; 5" chrome, straight, blunt-point forceps; straight dissecting needle; bent dissecting needle; 6" chrome probe and seeker; and 6" ruler.

SA04449M421



Advanced Dissecting Kit

Zipper case with velvet-like lining and stainless steel instruments: No. 3 surgical handle with No. 10 replaceable blade (2 extra blades included), 1½" narrow blade scalpel, 5½" sharp/blunt operating scissors, 4½" straight iris scissors, 5½" thumb forceps, 4½" fine-point forceps, mall probe and seeker, and straight teasing needle.

SB12625M421



University Level Anatomy Dissecting Kit

Black vinyl, zippered case has red velvet inner lining with 10 loops for organization. Contains straight teasing needle, bent teasing needle, 4½" iris scissors, 4½" medium point forceps, cartilage knife, 1 x 2 teeth tissue forceps, 5½" surgical scissors, #3 scalpel handle, mall probe, #10 scalpel blades (pkg. of 10), 5" hemostatic forceps, and 6" ruler.

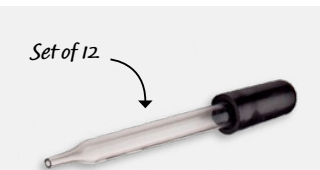
SB46659M421



Large Animal Dissecting Kit

Canvas roll case with 2 pockets and adjustable loops to hold instruments; 6¼" stainless steel Pean hemostat; 5½" stainless steel Kelly hemostat; No. 3 stainless steel scalpel handle; No. 10 scalpel blades (6); No. 11 scalpel blades (6); 4½" stainless steel iris scissors; 5½" stainless steel operating scissors; 4½" chrome, straight, fine-point forceps; 5½" chrome, straight, medium-point forceps; 6" chrome probe and seeker 5¼" section lifter; metal, straight dissecting needles (2); 2½" double-prong flesh hooks; and 6" celluloid ruler.

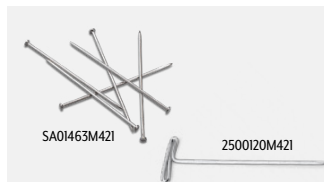
SA0129M421



Pipettes

Live elastin, latex-free nipple, high luster selected glass. Box of 12.

SA01161M421



Dissecting Pins

Steel pins with smooth sharp points. ½-lb. box. 2"L.

SA01463M421

T-Pins

Steel nickel-plated, ½-lb. box. Approximately 375 pins. 2"L.

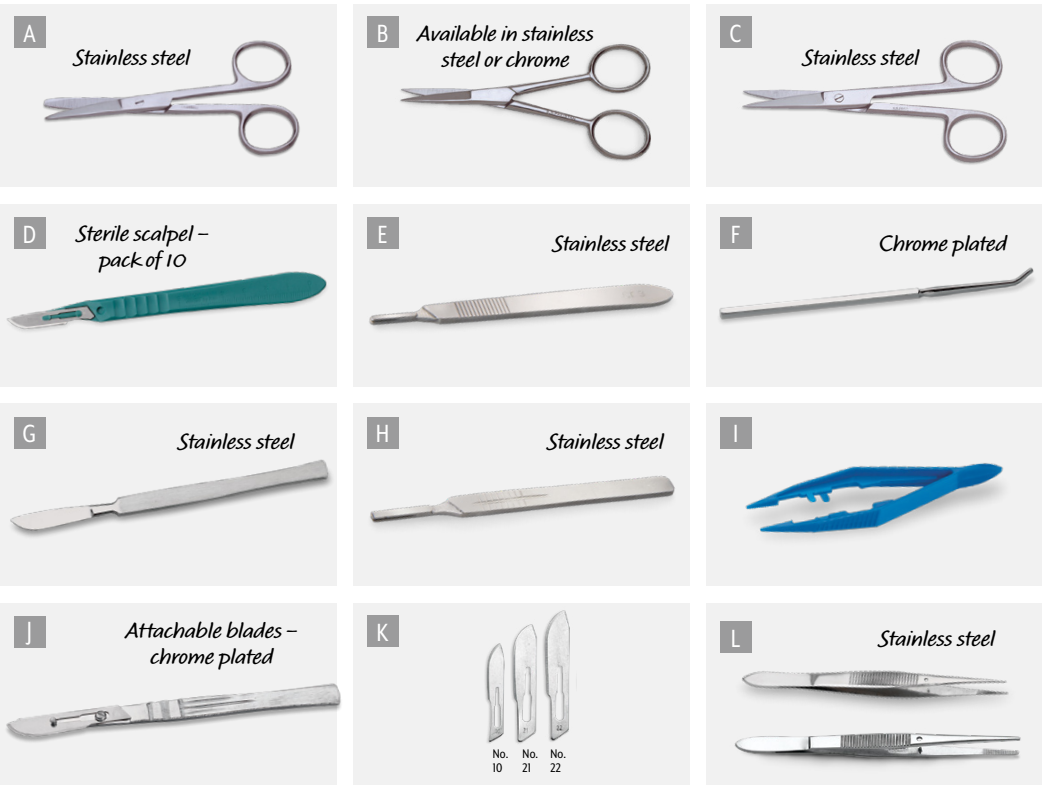
2500120M421



Molded Plastic Dissecting Case

Semi-hard plastic case. Easy to clean. Slots for individual tools. Autoclavable. Colors may vary.

SB15400M421



A. 1 Point Sharp/1 Point Blunt
SBI5420M42I 4½"
SBI0283M42I 5½"
SBI5408M42I 6½"

B. Dissecting Scissors, Straight, Fine Point
Product No. Type Material
SA01146M42I 4½" Stainless Steel
SA01145M42I 4½" Chrome

C. Both Points Sharp
SBI5417M42I 4½"
SBI0282M42I 5½"
SBI5406M42I 6½"

D. Sterile Disposable Scalpels
Plastic handle shaped for comfortable grip and easy manipulation of high-quality surgical steel blade. Honed to provide extremely sharp cutting edges. Packs of 10.
SBI5239M42I No. 10 Blade
SBI5240M42I No. 11 Blade
SBI5241M42I No. 21 Blade

E. Surgeon's Handle No. 3
No. 3 surgeon's handle for Nos. 10, 11, 12, and 15 surgeon's blades.
SB06903M42I —

F. Probe and Seeker
Mall probe 6"L. Solid steel, chrome-plated. Angular, semi-blunt tip. 6 mm dia. Hexagonal handle.
SB07838M42I

G. Scalpel
One-piece scalpel, 1½" blade, satin finish handle. Superior grade.
SA01179M42I

H. Surgeon's Handle No. 4
No. 4 handle for Nos. 20, 21, 22, 23, and 24 surgeon's blades.
SB07833M42I

I. Plastic Fine Point Forceps
4"L (11 cm).
SBI8875M42I

J. Safety-Lok Scalpel — Student Grade
Chrome-plated forged steel with screw lock to hold No. 22 blade firmly in place.
SA01177M42I

NOTE: For replacement blades, order No. 22 blade (SB09348M42I).

K. Surgical Scalpel Blades
Pack of 10
SB09342M42I No. 10 SB09348M42I No. 22

Box of 100
SB09351M42I No. 10 SB09357M42I No. 22
SB09356M42I No. 21

L. Dissecting Forceps
With serrated points and guide pin. 4½".

Fine Points
Product No. Type Material
SBI2628M42I Straight Stainless Steel

Medium Points
Product No. Type Material
SBI5410M42I Straight Stainless Steel

Nasco Dissection Pans

High-density polyethylene pans:

- Less expensive than aluminum
- Will not rust, crack, or leak
- Bottom retains shape — does not become rounded with use
- Not as deep — easy to perform routine dissections
- Designed to be used with Flex-Pads only, not with wax
- Chemical resistant
- Stackable for storage

Small Basic Dissecting Pan

Designed for grades with routine dissections using earthworms, crayfish, clams, grasshoppers, sea stars, perch, and grass frogs. Outside dimensions: 10" x 7".

Medium Standard Dissecting Pan

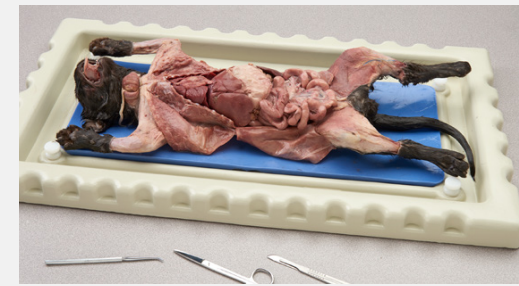
For general student use in dissection. Available in both tough, high-density polyethylene and durable, one-piece aluminum construction. Neither will rust, crack, or leak. Outside dimensions: 11½" x 7½".

Large Deluxe Dissecting Pan

For fetal pigs, bullfrogs, rats, and other large specimens. Tough, high-density polyethylene. Will not rust, crack, or leak. Outside dimensions: 12¾" x 9".



Product No.	Description
SBI1667M42I	Basic polyethylene pan only (10" x 7")
SBI4452M42I	Basic flex-pad only (fits 10" x 7" basic)
SBI1670M42I	Basic cover only (fits 10" x 7" basic)
SBI5232M42I	Standard polyethylene pan w/flex-pad and cover
SBI5233M42I	Standard polyethylene pan w/flex-pad
SBI5234M42I	Standard polyethylene pan only
SB08756M42I	Standard aluminum pan w/flex-pad and cover
SB07237M42I	Standard aluminum pan w/flex-pad
SB07238M42I	Standard aluminum pan only
SB07239M42I	Standard flex-pad only (fits 11½" x 7½" standard pans)
SB08753M42I	Standard cover only (fits 11½" x 7½" standard pans)
SB07241M42I	Deluxe flex-pad only (fits 12¾" x 9" deluxe pans)



Nasco Large Animal Dissection Tray

Designed for cats, rabbits, mink, and other large animals. Unbreakable, lightweight tray is chemical-resistant and has a skid-resistant bottom. Stack trays for storage. Clear plastic cover fits firmly over tray to prevent moisture loss and nestles for storage, but is not designed to stack with specimens inside.

Product No.	Description
SB32649M42I	Tray, flex-pad and cover
SB07288M42I	Dissection tray and pad
SB09565M42I	Tray only (30" x 16")
SB07840M42I	Flex-pad only (23" x 10")
SB09913M42I	Cover only





Clorox® Disinfecting Wipes – 75 ct.
Easy, fast, and convenient wipes eliminate 99.9% of common illness-causing germs. Pre-moistened wipes clean tough messes and stains on a variety of common surfaces. Fresh scent. Case of 6.
BE01339M421 –



Maxim® Hard Surface Sanitizer
Sanitizing spray for use on food contact surfaces. 32-oz. bottles. Case of 12.
WA35390M421



Paper Towels
Bleached one-ply paper towels ideal for carrying in your insemination kit or car. 9½" x 9½". Pack of 250.
CT1020M421



Ultrasonic Cleaner Lab
Quiet, solid state circuitry; high-powered transducer for superior cleaning; large tank capacity; and cooling fan. Five cycles with digital time display. 1,400 ml (2.40 pints) capacity. 110V. 9" x 7" x 6¼".
SB47541M421

Reusable



Black Wax Dissecting Pans
One-piece aluminum construction will not rust, crack, or leak.

Product No.	Description
SA00328M421	Standard (11½" x 7½") with wax
SB07238M421	Standard pan only
SB07156M421	Deluxe (13½" x 9½" x 2¼") with wax



Disposable Dissection Trays
Set of 30; 9¼" x 11¼".
SB41945M421



All-Purpose Disposable Aprons
Tough, smooth white aprons of 1.75-mil polyethylene are liquid-proof. Covers most people below the knee. Plastic ties and neckline band fit comfortably. 28" x 45". 100 aprons per dispenser box. 5 dispenser boxes per case.
W05863M421 Box of 100
W05864M421 Case of 500



Translucent Lab Aprons
6-mil thick plastic. Resistant to lab chemicals, acids, bases, oil, and grease. Ties at waist and neck are reinforced with cloth tape.
SB37257M421 36"L x 27"W
SB37256M421 42"L x 27"W
SB37258M421 46"L x 36"W



Economy Safety Glasses
Wide, single-piece lens and adjustable temples. Made of durable polycarbonate. Meets ANSI Z87.1 high impact standards.
SB32854M421 Blue Frame
SB39510M421 Black Frame



Fog-Free Chemical Splash Goggles
Fog free with high-quality PVC frame, polycarbonate lens, and indirect ventilation. Meets ANSI Z87.1 standards. Can be used in goggle sterilizer.
SB06969M421



Chemical Splash Goggles – Indirect Ventilation
High-quality PVC frame. Polycarbonate lens. Meets ANSI Z87.1 standards. Light blue or light green tint.
SB25324M421



Blue Nitrile Gloves
100% synthetic nitrile polymer, gloves are latex, powder, and odor free. 5 mil thick. Box of 100 for small, medium, and large; box of 90 for X-large. 5 mil thickness.
C20030M421 Small **C20031M421** Medium **C20032M421** Large **C20033M421** X-Large



Gold Latex Powder-Free Gloves
Made with light chlorination rinse. Nonslip, tacky surface provides excellent grip for both dry and wet applications. Minimum risk of potential glove-related chemical or protein allergies. Box of 100 for medium and large; box of 90 for X-large. 4 mil thickness.
C31908M421 Medium **C31909M421** Large **C31910M421** X-Large



Low Density Polyethylene Powder Free Gloves
Dispenser box of 100 gloves. 1½ mil thickness.
SB48963M421 Small **2100320M421** Medium
2100321M421 Large



Safety Goggles – Direct Ventilation
One-piece polycarbonate lens. Perforated frame for full direct ventilation. Meets ANSI Z87.1 standards.
SB25323M421 –



UV Sanitation Cabinet
Sanitize goggles, supplies, or other shared materials quickly and safely. Powered by a high-powered 25W UV lamp and includes six adjustable shelves. Place on desktop or wall-mount. Safety switches and key lock to ensure secure use. 26"L x 10"D x 29"H.
NE30051M421






Nasco Standard Stereo Microscope
Has all the quality and basic features necessary for dissection, botany, and earth sciences.

Specifications:

- 45° inclined head for optimum viewing efficiency and comfort
- Head raises, lowers, rotates 360° on pillar for off-base viewing
- Paired 15X wide-field eyepieces with rubber eye shields (3X objectives - magnifies 30X)
- Interpupillary adjustment
- Diopter adjustment on one side
- Top and bottom LED illumination, corded
- Rack and pinion focusing protected by slip clutch
- Tension control adjustment eliminates drift
- High-intensity, low-voltage illumination for optimum light
- Reversible black/white stage plate (also includes frosted glass stage plate)
- All parts lock on
- Base mounted on/off switch, heavy-duty three-wire safety cord and plug
- Dustcover
- Limited lifetime warranty

SB26447M421



Nasco QZE/QZF Zoom Stereo Microscopes
Ideal for studying living organisms, dissecting small specimens, studying crystalline or rock structure, plus electronic and small part inspections. Smooth in operation, it has a calibrated zoom range operable on both sides of the head.

Specifications:

- 45° inclined head
- Diopter control ±5 on both ocular tubes
- Magnification: 7X-45X
- Objectives: 10X wide field
- Working distance: 90 mm
- Interpupillary adjustment from 55-75 mm
- Coated optics for crisp image, superior resolution, and excellent stereoscopic effect
- Rack-and-pinion focusing with slip clutch and tension adjustment


QZE. Binocular head and a cluster of mini LED light panels for illuminating top and bottom. LED lights have long life and a cool temperature.
SB50598M421

QZF. Trinocular head for CCTV or digital photomicrographic system. LED top and bottom illumination. 2.5X photo eyepiece. 35 mm camera adapter with Minolta mount.
SB50599M421

- 94 mm clear and reversible black/white stage plate
- Diagonally adjustable top light creates desired amount of light on stage plate
- Separate light intensity control for top and bottom illumination
- Three-way, built-in illumination allows transmitted, incident, or dual lighting
- Dust cover and instructions



Plastic Slide Lab Pack
50 unbreakable 1" x 3" slides and cover slips (22 mm square), as well as a booklet of 50 sheets of lens tissue.
SB16377M421



Round Glass Magnifiers
General-purpose glass magnifiers suitable for routine examination of biological and geological specimens. Chrome rims with black plastic handles. 3" dia. 2-2.5X magnification.
SB16441M421



Hand Magnifier
Student magnifier molded of optical grade acrylic. 3X magnification with a 1 1/8" dia. lens.
SB18007M421


PROVIDE A LARGE WORK SURFACE, MOBILITY, AND DURABILITY



Mobile Project Collaboration Tables
Solid hard maple using thru-bolt reinforced mortise and tenon joints. 3" casters. Front casters are total-locking so the wheel will not turn and the caster itself will not rotate. Overall height: 36". Constructed with magnets so tables can be connected or disconnected without tools. Allow extra delivery time.

Product No.	Size	Top
Z51231M421	30" x 60"	HPL
Z51229M421	30" x 60"	Maple
Z51232M421	30" x 60"	Epoxy resin with maple base
Z51230M421	30" x 72"	Maple
Z51233M421	30" x 72"	Epoxy resin with maple base

Connect tables with magnets



Hardwood Chemsurf™-Topped Science Tables
Gr. 5+ Solid parawood hardwood construction with 2 1/4" square solid legs, 3/4" x 5" solid hardwood aprons, and protective black vinyl leg boots. Wilsonart Chemsurf™ chemical-resistant laminated tops are 1/4" thick. Limited resistance to high temperatures and severe chemicals. Tops are finished with vinyl T-molding. 30"H. Allow extra delivery time.

Z46783M421	24" x 48"
Z46786M421	24" x 54"
Z46801M421	24" x 60"
Z46789M421	24" x 72"
Z46792M421	30" x 60"
Z46795M421	30" x 72"

Adjustable glides



Steel Stationary Stools
Large, heavy-gauge steel seat with tempered Masonite panel. All-welded, tubular-steel frame, channelled footrest, and no bolts. Gray color. 14" seat dia. Allow extra delivery time.

9715463M421	Seat height 18"
0900743M421	Seat height 24"
0900745M421	Seat height 30"



The ADA Mobile Lab Station is a wooden mobile unit with a black countertop and a stainless steel sink. It features a water pump and two water bottles. An optional markerboard is mounted on the side. The unit has drawers and a cabinet for storage.

ADA Mobile Lab Station
Chemical-resistant laminate. Stainless steel sink equipped with electric water pump and two water bottles. Water pump is operated with a toggle. 72"L x 24"D x 33"H. Allow extra delivery time. 🚚
Z15102M421
Z11219M421 Combination Mirror/Markerboard



The Mobile Demo Table is a wooden mobile unit with a black countertop. It has a sliding door that opens to reveal two adjustable shelves and a storage compartment. The unit is on casters.

Mobile Demo Table
Chemical-resistant, earth-friendly maple demo table with 500-lb. capacity. Unbreakable aluminum sliding door glides and lock, laminated top, inlet and duplex outlet, and two adjustable shelves. Top: 72"W x 24"D. Allow extra delivery time. 🚚
Z50293M421



The Economy Mobile Lab Table is a wooden mobile unit with a black countertop and a stainless steel sink. It has two adjustable shelves behind sliding doors. The unit is on casters.

Economy Mobile Lab Table
Storage for water bottles and two adjustable shelves behind sliding doors. Top is black 1/4" plastic laminate. Sink: 15"W x 13"L x 5"H. Table: 48"W x 24"D x 36"H. Oak with natural finish. Allow extra delivery time. 🚚
Z18488M421



The Stainless Steel Lab Cart is a three-tier stainless steel cart with a top shelf, a middle shelf, and a bottom shelf. It has a locking mechanism on the top shelf and is on casters.

Stainless Steel Lab Cart
300-lb. capacity. Shelves are electronically welded to legs. Padding under cart shelves deadens vibration and noise. Protective bumpers on legs and handles. Overall size: 16 1/4" x 27 1/2" x 32 1/2". Shelf size: 15 1/2" x 24". 3 1/2" swivel casters. Allow extra delivery time. 🚚
Z09515M421

Give students real-world training

Give students the training tools to develop fundamental skills that can translate into future careers. By training through simulation, students will gain real-world experience in the classroom.

Animal

Expand the study of animal science and health care in a hands-on way. For students interested in pursuing careers in veterinary sciences, simulation training will give them practice in providing animals the care they need.



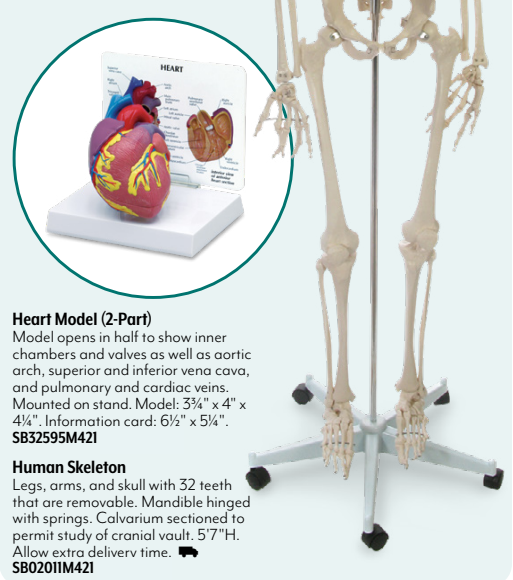
The image shows a collection of veterinary simulation equipment, including a red blood bag, a syringe, a catheter, and a small animal model.

Life/form® Canine IV Leg
A fully functional canine IV leg trainer at an affordable price. Represents the left foreleg of a medium-sized dog in the sternal recumbent position with two interchangeable sleeves — normal fur for routine blood draws and a "shaved" area for IV catheter insertion. Replaceable vein system demonstrates actual blood flashback. Great for bandaging and restraint/assistance practice as well. Ideal for veterinary schools and vet tech programs. Portable storage box with built-in IV pole, blood powder, syringe, IV catheter, and two fluid supply bags.
LF01016M421

Vet Tech Surgical Instrument Kit with Identification Flash Cards
Learning to identify veterinary instruments is made easier when users can handle each instrument and compare action, weight, and feel. Includes 29 of the most common instruments with display case and flash cards. Care and handling instructions are also included.
C53788M421

Human

Dig deeper into biology and anatomy concepts with the use of models and other learning tools. Students can get a closer look and a better understanding of the human body through a range of anatomical models, including a full-scale human skeleton.



The image shows a full-scale human skeleton model and a heart model. The heart model is a detailed anatomical model of the human heart, showing the major blood vessels and the heart chambers.

Heart Model (2-Part)
Model opens in half to show inner chambers and valves as well as aortic arch, superior and inferior vena cava, and pulmonary and cardiac veins. Mounted on stand. Model: 3 3/4" x 4" x 4". Information card: 6 1/2" x 5 1/4".
SB32595M421

Human Skeleton
Legs, arms, and skull with 32 teeth that are removable. Mandible hinged with springs. Calvarium sectioned to permit study of cranial vault. 5'7"H. Allow extra delivery time. 🚚
SB02011M421



NASCOGuard®, Natural Skeletal
Structures – Elbow Joint,
Preserved
Product #: LS03566



NASCOGuard®, Natural Skeletal
Structures – Longitudinal Section
Of Bone, Preserved
Product #: LS03567



Roylco® True-to-Life Human
X-Rays™ – Set Of 18
Product #: SB40317



Roylco® Fixed Bone X-Rays
Product #: EL14149



NASCOGuard®, Natural Skeletal
Structures – Cross Section Of
Long Bone, Preserved
Product #: LS03568



Disarticulated Human Skeleton
Product #: SB13487



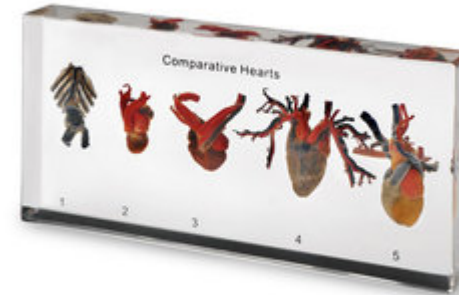
Roylco® Broken Bones X-Rays™
– Set Of 15
Product #: SB43367



Biomimicry: Technology Inspired
By Nature – Set Of 12 Mounts
Product #: SB50607



Rabbit Dissection Preserved
Specimen Displays
Product #: SB51177



Heart Comparison Mount
Product #: SB48487



Insect Specimen Blocks – Insect
Orders

Product #: SB48191



Animal Kingdom 20-Piece Mount
Set

Product #: SB47476



Animal Kingdom 12-Piece Mount
Set

Product #: SB47475



Marine Animal Kit
Product #: SB51695



Resin Casting Specimen Mount
Kit
Product #: 9726894



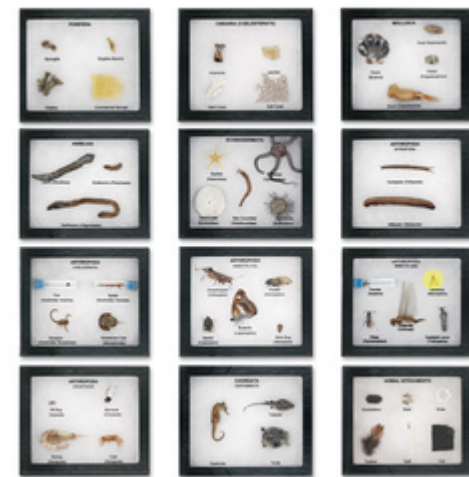
Grasshopper Life Cycle Specimen
Mount
Product #: SB42039



Squid Dissection Display
Product #: SB52042



Shark Teeth And Jaw Display
Product #: SB52193

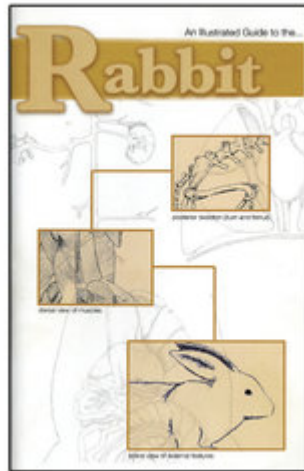


Animal Kingdom Survey Set
Product #: SB37287



Life Cycle Of A Cockroach

Product #: SB51262



Rabbit Dissection Guide
Product #: SB45097



Guide To The Dissection Of The
Mink
Product #: S08849



Frog Dissection Guide
Product #: SB10258



Economy Set Of Animal
Dissection Guides
Product #: SB23166



Nasco Student Squid Dissection
Guide
Product #: SB18116



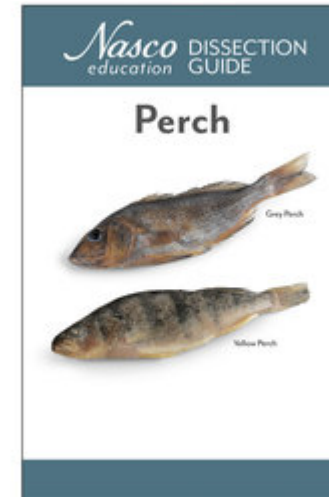
Squid Dissection Chart
Product #: SB51999



Earthworm Dissection Chart
Product #: SB51998



BioCam's Concise Starfish (Sea
Star) Dissection Chart
Product #: SB51693



Student Perch Dissection Guide
Product #: SB07313



Earthworm Dissection Guide
Product #: SB07316



Crayfish Dissection Guide
Product #: SB07315



Clam Dissection Guide
Product #: SB07320

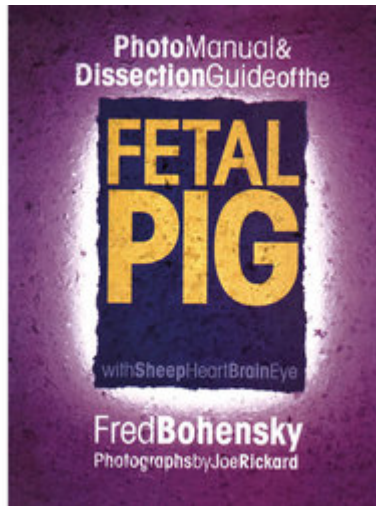


Photo Manual And Dissection
Guide To The Fetal Pig
Product #: SB42225

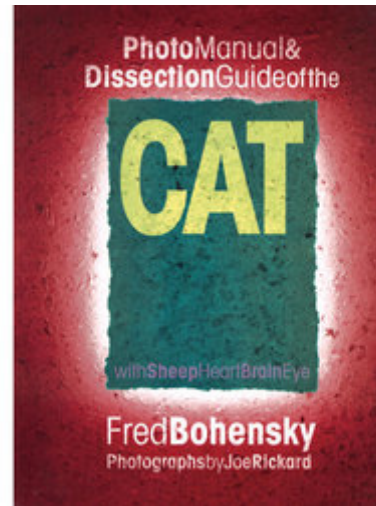


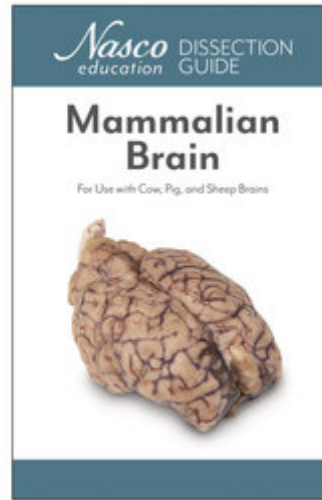
Photo Manual And Dissection
Guide To The Cat
Product #: SB42224



An Illustrated Dissection Guide To
The Pigeon
Product #: SB42374



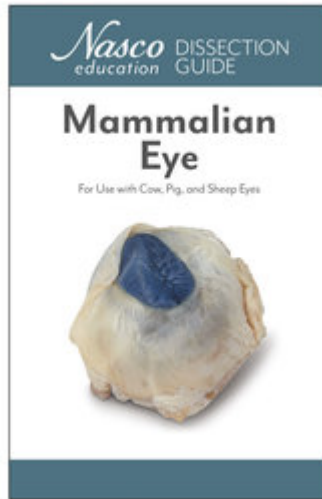
Perch Dissection Chart
Product #: SB52000



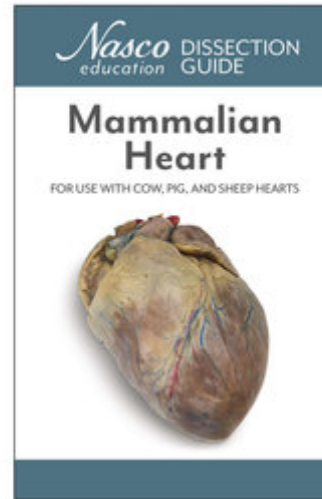
Student Dissection Guides – Brain
Product #: SB11118



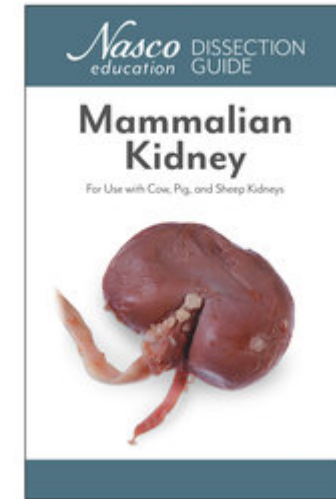
Student Rat Dissection Guides
Product #: SB29846



Student Dissection Guides – Eye
Product #: SB07318



Student Dissection Guides –
Mammalian Heart
Product #: SB07319



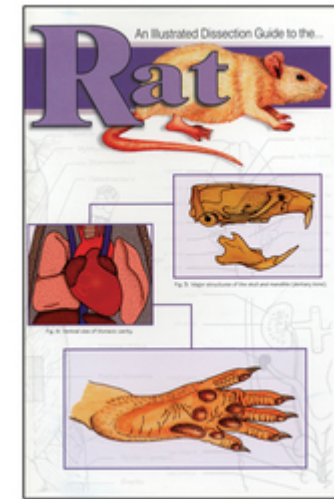
Student Dissection Guides – Kidney
Product #: SB11119



Grasshopper Dissection Guide
Product #: SB07317



Sea Star (Starfish) Dissection Guide
Product #: SB07314



An Illustrated Dissection Guide To
The Rat
Product #: SB29754



An Illustrated Dissection Guide To
The Fetal Pig
Product #: SB42373



An Illustrated Dissection Guide To
The Squid
Product #: SB42377



Fetal Pig Aprons
Product #: SB35157



Instrument Sorting Tray
Product #: SB25286



Iris Research Scissors - Straight
Blades
Product #: SB06901



Economy Dissection Trays
Product #: SB41945



Sterile Disposable Scalpel With
No. 10 Blade
Product #: SB15239



Plastic Forceps
Product #: SB48152



Micro-dissection Forceps – Very
Fine, Extra-Long Points
Product #: SB12630



Specimen Bags – 10 In. X 18 In.
Product #: SB48481



Dissecting Forceps (Fine Points) –
Straight, Chrome Plated
Product #: SA01134



Surgical Scissors (One Point
Sharp/One Point Blunt) – 5-1/2 In.
Straight

Product #: SB10283



Zippy™ Dissecting Kits –
Standard Scalpel

Product #: SB39431



Standard Polyethylene Pan With
Disecto Flex-Pad And Cover

Product #: SB15232



Standard Polyethylene Pan With
Disecto Flex-Pad
Product #: SB15233



Standard Polyethylene Pan
Product #: SB15234



Angular Iris Scissors
Product #: SB15404



Molded Plastic Dissecting Case
Product #: SB15400



Adenna® Gold Latex Powder-Free Exam Gloves – Medium
Product #: C31908



Nasco Life Science Lab Kit
Product #: Z50306



Snap-Off Blade Knife
Product #: 9705448



Introductory Set - Elementary
Dissecting Kit
Product #: SA01127



Pipettes - 2ml - Glass - Box Of 12
Product #: SA01161



Safety-Lok Scalpel (Student
Grade)

Product #: SA01177



Plastic Forceps

Product #: SB18875



Chrome, Straight, Fine Point
Dissecting Scissors - 4-1/2 In.

Product #: SA01145



Standard Disecto Dissecting Pan
Cover Only (Fits 11-1/2 In. X 7-1/2 In.
Standard Pans)
Product #: SB08753



Standard Aluminum Pan With
Disecto Flex-Pad And Cover
Product #: SB08756



Instructor's Advanced Dissecting
Kit
Product #: SB12625



Scalpel (Student Grade)
Product #: SB12627



Introductory Set – Basic Dissecting
Kit
Product #: SB12623



11 In. X 18 In. Disecto Flex-Pad
Product #: SB46036



18 In. X 11 In. Dissection Tray
Product #: SB46035



Biology Dissecting Kit –
Intermediate Set
Product #: SA04449



1-lb. Replacement Wax For Black
Wax Dissecting Pans
Product #: SA04451



Standard Black Wax Dissecting
Pan With Wax
Product #: SA00328



Nasco Large Dissection Tray With
Disecto Flex-Pad
Product #: SB07288



Standard Disecto Flex-Pad (Fits
11-1/2 In. X 7-1/2 In. Standard Pans)
Product #: SB07239



Standard Dissecting Pan Only
Product #: SB07238



Standard Aluminum Pan With
Disecto Flex-Pad
Product #: SB07237



Deluxe Disecto Flex-Pad (Fits
12-3/4 In. X 9 In. Deluxe Pans)
Product #: SB07241



2-1/2 In. Magnifier
Product #: SB46609



University Level Anatomy
Dissecting Kit
Product #: SB46659



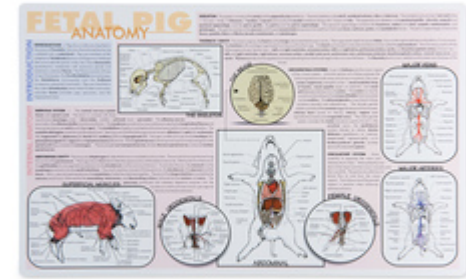
Surgeon's Handle No. 4 Scalpels
Product #: SB07833



T-Pins
Product #: 2500120



Shark Tray
Product #: SB13624



Pig Dissection Mat
Product #: SB32578



Frog Aprons
Product #: SB32571



Frog Dissection Mat
Product #: SB32577



Parts Of The Eye Apron
Product #: SB42833



Small Basic Dissecting Pan Cover
(Fits 10 In. X 7 In. Econopan)
Product #: SB11670



Classroom Dissection Instrument
Set - Economy Grade Set A
Product #: SB15428



Dissecting Forceps (Medium
Points) - Straight, Stainless Steel
Product #: SB15410



5-1/2 In. Tissue Forceps
Product #: SB15411



Surgeon's Handle No. 3 Scalpels
Product #: SB06903



Surgical Scalpel Blades - No. 12,
Pkg. Of 100
Product #: SB09353



Latex-Free Econo-Blue Nitrile
Gloves – Large
Product #: C20032



Latex Free Poly PPE Gloves –
Small Size – Box Of 100
Product #: SB48963



Nasco-Guard, Humectant Fluid
Concentrate – 1-Gallon Bottle
Product #: SB24182



Nasco High School Advanced
Microscope, Trinocular Head
Product #: Z48550



Nasco Large Dissection Tray
Cover
Product #: SB09913



Intermediate Set - Biology
Dissecting Kit With Vinyl Case
Product #: SB10272



NASCOGuard® Humectant Fluid
– One-Gallon Bottle
Product #: SB12631



Dissecting Kits – Screw-Lock
Blade Scalpel
Product #: SB39430



Surgical Scalpel Blades – No. 10,
Pkg. Of 10
Product #: SB09342



Rat Dissection Apron
Product #: SB40225



Forceps
Product #: SA01133



Scalpel
Product #: SA01179



Disecto Flex-Pad For 10 In. X 7 In.
Pan
Product #: SB14452



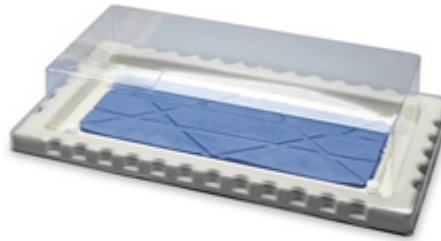
Size 8 Latex Gloves
Product #: SB12159



NASCOGuard® Humectant Fluid
– Five 1-Gallon Bottles
Product #: SB17218



Introductory Set – Elementary
Dissecting Kit
Product #: SB07839



Nasco Large Animal Tray, Flex-
Pad And Cover
Product #: SB32649



Thumb Forceps – 5-1/2 In. Long
Product #: SA04467



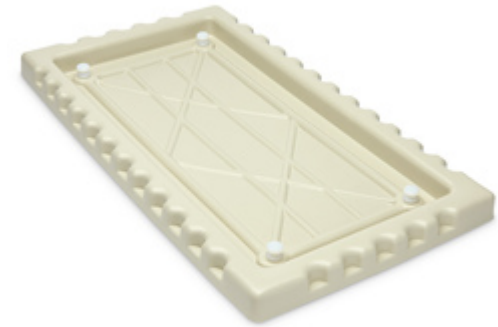
Straight Plastic Handle Teasing
Needle

Product #: S08847



Small Basic Dissection Pan

Product #: SB11667



Nasco Large Animal Dissection
Tray

Product #: SB09565



Surgical Scissors (Both Points Sharp) – 4-1/2 In. Straight
Product #: SB15417



Dissecting Pins
Product #: SA01463



Ultrasonic Cleaner Lab
Product #: SB47541



Large Animal Veterinary Kit
Product #: SA01129



Probe And Seeker
Product #: SB07838



NASCOGuard®, Try It Dissection
Kit - Rat Kit, Preserved
Product #: LS03848



NASCOWatch®, Try It Dissection
Kit - Perch Kit, Preserved
Product #: LS03849



NASCOWatch®, Try It Dissection
Kit - Clam Kit, Preserved
Product #: LS03861



NASCOWatch®, Try It Dissection
Kit - Cow Eye Kit, Preserved
Product #: LS03859



NASCOGuard®, Try It Dissection
Kit – Frog Kit, Preserved
Product #: LS03850



NASCOGuard®, Try It Dissection
Kit – Sea Star (Starfish) Kit,
Preserved
Product #: LS03851



NASCOGuard®, Try It Dissection
Kit – Crayfish Kit, Preserved
Product #: LS03852

NEW



NASCOWatch®, Try It Dissection
Kit – Worm Kit, Preserved
Product #: LS03853



NASCOWatch®, Try It Dissection
Kit – Squid Kit, Preserved
Product #: LS03854



United Scientific Dissection Kit
Product #: NE30313



Eye-Spy Magnifying Bug Viewers
Product #: SB48490



Professional Insect Net
Product #: SB43415



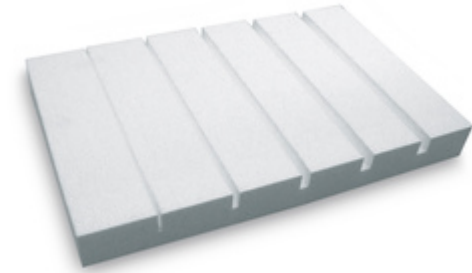
Professional Butterfly Net
Product #: SB43416



Student Insect Net
Product #: SB43411



Insect Pins - Size 4
Product #: S08230



Insect Pinning Board
Product #: SB44316



Nasco Collecting And Mounting Kit
Product #: SA02725



Insect Net
Product #: C33048



Student Butterfly Net
Product #: SB43413



Nasco Dual INflatable Lungs
Comparison Kit
Product #: LS03802



Nasco Inflatable Lung Kit
Product #: LS03765



Nasco Inflatable Healthy Lungs
Only
Product #: LS03764



Nasco-Guard, Dual Lung Rack
Update Kit, Preserved
Product #: LS03805



NASCOGuard®, Inflatable Lungs
Maintenance Kit
Product #: LS03738



Nasco Inflatable Lungs
Comparison Kit With Teacher
Instructional DVD
Product #: LS03769



Nasco Inflatable Simulated
Smoker's Lungs
Product #: LS03766



Nasco Inflatable Lungs
Comparison Kit
Product #: LS03768



Bellows Pump
Product #: SB29032



Nasco Simulated Smoker's Lungs
Demonstration Kit
Product #: LS03767



Nasco-Guard, Dual Lung Rack
Assembly
Product #: LS03801



NASCOGuard®, Sea Star
(Starfish) (Asterias) – Size: 4 In.–6
In., Plain – Preserved
Product #: LS01073



Large Seashell Mix
Product #: SB40944



NASCOGuard®, Crayfish
(Cambarus) – Size: 4 In.–6 In.,
Injection: Plain, Preserved
Product #: LS01314



NASCOGuard®, Crayfish
(Cambarus) – Size: 4 In.–6 In.,
Injection: Single, Preserved
Product #: LS02428



NASCOGuard®, Lubber
Grasshopper (Romalea
Microptera), Preserved
Product #: LS01319



Sponge Spicule Lab Activity
Product #: SB51342



NASCOGuard®, Blue Saltwater
Mussel (*Mytilus*), Preserved
Product #: LS03554



NASCOGuard®, Crayfish
Classroom Pack Special,
Preserved
Product #: LS03720



NASCOGuard®, Grasshopper
Classroom Pack Special,
Preserved
Product #: LS03721



NASCOGuard®, Clam Classroom
Pack Special, Preserved
Product #: LS03718



NASCOGuard®, Earthworms
Classroom Pack Special,
Preserved
Product #: LS03719



NASCOGuard®, Sand Dollar
(Echinarachnius Sp.), Preserved
Product #: LS03607



Hard & Soft Corals
Product #: SB39168



NASCOGuard®, Octopus
(Octopus Bairdi) – Small 2 In.-5 In.
(5-12 Cm), Preserved
Product #: LS01303



NASCOGuard®, Purple Sea
Urchin (Arbacia), Preserved
Product #: LS01311



NASCOGuard®, Amphioxus,
Preserved
Product #: LS01342



NASCOGuard®, Scorpion, Large,
Preserved
Product #: LS01336



NASCOGuard®, Green Sea
Urchin (Strongylocentrotus Sp.),
Preserved
Product #: LS02405



NASCOGuard®, Squid (*Loligo*) –
Size: 8 In.–12 In., Injection: Vascular
Injection, Preserved
Product #: LS02422



NASCOGuard®, Earthworm
(*Lumbricus Terrestris*) – Size: 8
In.–10 In., Circulatory System
Injected, Preserved
Product #: LS01081



NASCOGuard®, Northern Coral
(*Astrangia Sp.*), Preserved
Product #: LS03458



NASCOGuard®, Squid (Loligo) –
Size: 12 In.–16 In., Injection: Vascular
Injection, Preserved
Product #: LS02420



NASCOGuard®, Freshwater Clams
(Unio Or Anodonta) – Size: 4 In.–5 In.
Preserved
Product #: LS01083



NASCOGuard®, Sandworm Or
Clam Worm (Nereis), Preserved
Product #: LS01292



NASCOGuard®, Pig Roundworm
(*Ascaris Suum*) – Preserved
Product #: LS01071



NASCOGuard®, Goose Barnacle
(*Lepas*), Preserved
Product #: LS02630



NASCOGuard®, Marine Quahog
(*Venus Mercenaria*), Preserved
Product #: LS02416



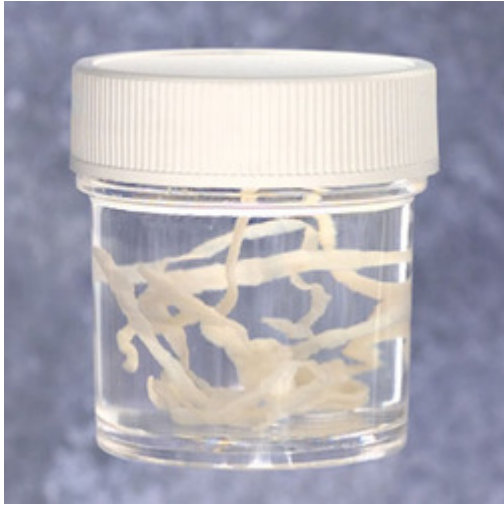
NASCOGuard®, Sea Star (Starfish)
Classroom Pack Special, Preserved
Product #: LS03722



Marine Clam Dissection
Product #: SB48348



NASCOGuard®, Lubber
Grasshopper (*Brachystola Magna*),
Preserved
Product #: LS03477



NASCOGuard®, Dog Tapeworm
(*Dipylidium Caninum*), Preserved
Product #: LS03594



NASCOWatch®, Vertebrate Organ
Comparison Kit, Preserved
Product #: LS03806



NASCOWatch®, Mammalian Eye
Comparison, Class Set Of 30,
Preserved
Product #: LS03828



NASCOWatch®, Pig Organ –
Uterus, Non-Pregnant, Preserved
Product #: LS03491



NASCOGuard®, Pig Organ –
Kidney (Plain), Preserved
Product #: LS03352



NASCOGuard®, Sheep Organ –
Heart, Preserved
Product #: LS01155



NASCOGuard®, Pig Organ – Ovary,
Preserved
Product #: LS03490



NASCOGuard®, Pig Organ Set,
Preserved
Product #: LS03496



NASCOGuard®, Sheep Organ –
Brain, With Hypophysis And Cranial
Nerve Roots, Preserved
Product #: LS03570



NASCOGuard®, Sheep Brain With
Dura Mater, Preserved
Product #: LS03546



NASCOGuard®, Cat Anatomy And
Mammalian Organ Study Set –
Replacement Preserved
Specimens, Preserved
Product #: LS03711



NASCOGuard®, Pig Organ –
Intestine, Preserved
Product #: LS03593



NASCOGuard®, Pig Organ –
Larynx, Preserved
Product #: LS03612



NASCOWatch®, Cow Organ – Eye,
Preserved
Product #: LS01628



Nasco Dry-Preserved Pig Heart
Product #: LS01955



NASCOWatch®, Pig Organ – Eye,
Preserved
Product #: LS02532



NASCOGuard®, Preserved
Reproductive Tract From Cow,
Preserved
Product #: LS02798



NASCOGuard®, Pig Organ - Heart,
Preserved
Product #: LS02530



NASCOGuard®, Pig Stomach,
Preserved
Product #: LS03544



NASCOGuard®, Bovine Organ –
Testicles, Preserved
Product #: LS03532



NASCOGuard®, Cat Anatomy And
Mammalian Organ Study Set With
Photographic Atlas, Preserved
Product #: LS03710



Nasco Dried Lung Section
Product #: LS03686



NASCOGuard®, Dry-Preserved
Swine Lungs – Preserved
Product #: LS01956



NASCOGuard®, Sheep Organ –
Brain, With Cranial Nerve Roots,
Preserved
Product #: LS01152



NASCOGuard®, Pig Organ – Heart
In Pericardium, Preserved
Product #: LS03569



NASCOGuard®, Sheep Organ –
Testicle, Preserved
Product #: LS03494



NASCOGuard®, Sheep Organ –
Head, Without Lower Jaw,
Preserved
Product #: LS03698



NASCOGuard®, Sheep Organ –
Pluck, Preserved
Product #: LS01627



NASCOGuard®, Sheep Organ Set,
Preserved
Product #: LS03140



NASCOGuard®, Sheep Organ –
Larynx, Preserved
Product #: LS03493



NASCOGuard®, Sheep Organ –
Brain, Half, With Cranial Nerve
Roots, Preserved
Product #: LS03354



NASCOGuard®, Sheep Organ –
Head, With Lower Jaw, Preserved
Product #: LS03699



NASCOGuard®, Sheep Organ –
Eyes, Unit Of 10, Preserved
Product #: LS01439



Nasco Individual Large-Sized Owl
Pellet
Product #: SB09759



Nasco Advanced Owl Pellet Kit
Product #: SB20192



NASCOGuard®, 3-Specimen
Economy Survey Set, Preserved
Product #: LS03817



NASCOGuard®, 6 Large
Specimens Zoology Survey Set,
Preserved
Product #: LS03558



NASCOGuard®, BioQuest®
Hands-On Invertebrate Study Set
- Replacement Specimens,
Preserved
Product #: LS03716



Nasco-Guard, BioQuest® Hands-On Invertebrate Study Kit,
Preserved
Product #: LS03736



NASCOGuard®, Bulk Assortment
Of 5 Large Specimens, Preserved
Product #: LS03602



NASCOGuard®, Zoology Survey
Set With Study Guides
Product #: LS03737



NASCOGuard®, Preserved
Animal Survey Set B, Preserved
Product #: LS03548



NASCOGuard®, Mammalian
Anatomy Survey Set, Preserved
Product #: LS03497



NASCOGuard®, 6 Medium
Specimens Zoology Survey Set –
Preserved
Product #: LS03498



NASCOGuard®, Dissection
Survey Set – Zoology Survey Set,
7 Medium Specimens, Preserved
Product #: LS01570



NASCOGuard®, Preserved
Animal Survey Set – Basic Animal
Kingdom, Preserved
Product #: LS03550



NASCOGuard®, Preserved
Animal Survey Set – Arthropod,
Preserved
Product #: LS03613



Cow Organ Set W/ Sheep Brain
Product #: LS03495(SB)



Nasco Cause Of Death Autopsy Investigation - Replacement Kit, Preserved

Product #: LS03825(CB)



Nasco-Guard, Preserved Cause Of Death Autopsy Investigation Kit

Product #: LS03825



NASCOGuard®, Fetal Pig - Size: 10 In.-13 In., Injection: Plain, Preserved

Product #: LS03787



NASCOGuard®, Cat (With Skin) –
14 In.–19 In. – Plain Injection,
Preserved
Product #: LS01429



NASCOGuard®, Try It Dissection
Kit – Fetal Pig, Preserved
Product #: LS03815



NASCOGuard®, Grass Frog
(Rana Sp.) – Size: 3 In.–4 In.,
Injection: Plain, Preserved
Product #: LS01373



NASCOGuard®, Shark – Size: 27
In.+, Injection: Plain, Preserved
Product #: LS03585



NASCOGuard®, Shark – Size: 18
In.-22 In., Injection: Plain,
Preserved
Product #: LS03575



NASCOGuard®, Cat (With Skin) –
19 In.-23 In. – Single Injection,
Preserved
Product #: LS02505



NASCOGuard®, Fetal Pig – Size: 7
In.–10 In., Injection: Plain,
Preserved
Product #: LS03784



NASCOGuard®, Double Injected
Ranch–Raised Mink (Descended),
Preserved
Product #: LS01963



NASCOGuard®, Rat – 9 In. +,
Double Injected, Preserved
Product #: LS03576



NASCOGuard®, Preserved Turtle
– Size: 6 In.-8 In., Plain, Preserved
Product #: LS02657



NASCOGuard®, Pro-Sect™ Rat,
Preserved
Product #: LS03726



NASCOGuard®, Frog Classroom
Pack Special, Preserved
Product #: LS03724



NASCOGuard®, Fetal Pig – Size: 4
In.–7 In., Injection: Plain, Preserved
Product #: LS03783



NASCOGuard®, Cat (With Skin) –
16 In.–23 In. – Double Injection –
Preg., Preserved
Product #: LS02671



NASCOGuard®, Preserved
Pigeon – Injection: Double,
Preserved
Product #: LS02019



NASCOGuard®, Fetal Pig – Size: 13
In.–16 In., Injection: Plain, Preserved
Product #: LS03790



NASCOGuard®, Shark – Head,
Long Cut, Preserved
Product #: LS01348



NASCOGuard®, Sparrow Or
Starling (Passer Domesticus Or
Sturnus Vulgaris), Preserved
Product #: LS01426



NASCOGuard®, Mouse – Plain,
Preserved
Product #: LS01433



NASCOGuard®, Grey Perch
(*Pomadasys Macracanthus*) – Size:
7 In.–9 In., Injection: Plain, Preserved
Product #: LS03689



NASCOGuard®, Cat (Skinned) – 14
In.–19 In. – Double Injection,
Preserved
Product #: LS03557



NASCOGuard®, Cat (Skinned) – 16
In.–23 In. – Double Injection – Preg.,
Preserved

Product #: LS03597



Frog Classroom Pack Deluxe,
Preserved

Product #: LS03724(A)



Lamprey (Petromyzon Or
Entosphenus), Plain, Preserved

Product #: LS02460



NASCOGuard®, Yellow Perch
(Perca Flavescens) – Size: 8 In.+,
Injection: Single, Preserved
Product #: LS02485



NASCOGuard®, Preserved Turtle –
Size: 8 In.-10 In., Injection: Triple,
Preserved
Product #: LS02664



NASCOGuard®, Shark – Size: 22
In.-27 In., Injection: Plain, Preserved
Product #: LS02467



NASCOGuard®, Rat – 7 In.–9 In.
Injection: Plain, Preserved
Product #: LS01436



NASCOGuard®, Bullfrog (Rana Sp.)
– Size: 5 In.–6 In., Injection, Single,
Preserved
Product #: LS01366



NASCOGuard®, Bullfrog (Rana Sp.)
– Size: 6 In.–7 In., Injection, Double,
Preserved
Product #: LS01363



NASCOGuard®, Yellow Perch
(*Perca Flavescens*) – Size: 7 In.+,
Injection: Plain, Preserved
Product #: LS01352



NASCOGuard®, Skate (*Raja*),
Preserved
Product #: LS03480



NASCOGuard®, Grass Frog (*Rana*
Sp.) – Size: 4 In.– 4-1/2 In., Injection:
Double, Preserved
Product #: LS02496



NASCOGuard®, Fetal Pig Sagittal
Section, Preserved
Product #: LS03565



NASCOGuard®, Cat (With Skin) –
12 In.–14 In. – Double Injection,
Preserved
Product #: LS03363



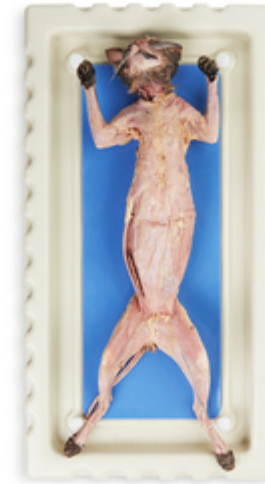
NASCOGuard®, Classroom Frog
Economy Kit, Preserved
Product #: LS03749



NASCOGuard®, Rat Classroom
Pack, Preserved
Product #: LS03763



NASCOGuard®, Shark – Size: Adult,
Injection: Double, Pregnant,
Preserved
Product #: LS02472



NASCOGuard®, Cat (Skinned) – 19
In.–23 In. – Triple Injection,
Preserved
Product #: LS03536



Lamprey (Petromyzon Or
Entosphenus) – Large, Single
Injected, Preserved
Product #: LS03744



NASCOGuard®, Grass Frog (Rana
Sp.) – Size: 4-1/2 In.- 5-1/2 In.,
Injection: Double, Preserved
Product #: LS03714



NASCOGuard®, Nonvenomous
Snake, Preserved
Product #: LS01422



NASCOGuard®, Preserved Rabbit
– Size: Large, Injection: Single,
Preserved
Product #: LS02519



NASCOGuard®, Grey Perch
Classroom Pack, Preserved
Product #: LS03778



NASCOGuard®, Mink – Double
Injected, Preserved
Product #: LS01963(B)



NASCOGuard®, Rat – Size: 7 In.+,
Injection: Double, Pregnant,
Preserved

Product #: LS02823

По вопросам продаж и поддержки обращайтесь:			
Алматы (7273)495-231	Казань (843)206-01-48	Новокузнецк (3843)20-46-81	Смоленск (4812)29-41-54
Архангельск (8182)63-90-72	Калининград (4012)72-03-81	Новосибирск (383)227-86-73	Сочи (862)225-72-31
Астрахань (8512)99-46-04	Калуга (4842)92-23-67	Омск (3812)21-46-40	Ставрополь (8652)20-65-13
Барнаул (3852)73-04-60	Кемерово (3842)65-04-62	Орел (4862)44-53-42	Сургут (3462)77-98-35
Белгород (4722)40-23-64	Киров (8332)68-02-04	Оренбург (3532)37-68-04	Тверь (4822)63-31-35
Брянск (4832)59-03-52	Краснодар (861)203-40-90	Пенза (8412)22-31-16	Томск (3822)98-41-53
Владивосток (423)249-28-31	Красноярск (391)204-63-61	Пермь (342)205-81-47	Тула (4872)74-02-29
Волгоград (844)278-03-48	Курск (4712)77-13-04	Ростов-на-Дону (863)308-18-15	Тюмень (3452)66-21-18
Вологда (8172)26-41-59	Липецк (4742)52-20-81	Рязань (4912)46-61-64	Ульяновск (8422)24-23-59
Воронеж (473)204-51-73	Магнитогорск (3519)55-03-13	Самара (846)206-03-16	Уфа (347)229-48-12
Екатеринбург (343)384-55-89	Москва (495)268-04-70	Санкт-Петербург (812)309-46-40	Хабаровск (4212)92-98-04
Иваново (4932)77-34-06	Мурманск (8152)59-64-93	Саратов (845)249-38-78	Челябинск (351)202-03-61
Ижевск (3412)26-03-58	Набережные Челны (8552)20-53-41	Севастополь (8692)22-31-93	Череповец (8202)49-02-64
Иркутск (395)279-98-46	Нижний Новгород (831)429-08-12	Симферополь (3652)67-13-56	Ярославль (4852)69-52-93
Россия (495)268-04-70	Киргизия (996)312-96-26-47	Казахстан (7172)727-132	